



BANSHEE EXCEL™ AUDIBLE WARNING DEVICE

The Banshee Excel™ Sounders are designed to meet the highest standards of performance and reliability.

Manufactured in flame retardant ABS, and available in a range of colours the Banshee Excel™ is ideal for all signalling applications and environments.

As with all Hosiden Besson Banshee™ sounders the Excel is easily installed with a push and twist bayonet fixing.

The Banshee Excel™ will blend in effortlessly with it's surroundings.

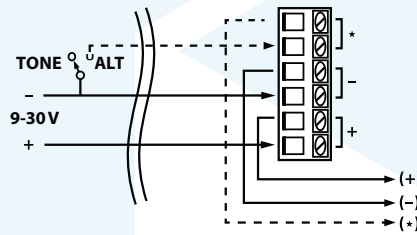
- Approved to EN54 - 3
- 2831-CPR-F1832 by BRE Global
- Ultra low current consumption
- 32 user selectable tones
- Choice of 3 volume levels
- Rated IP66 or IP21C
- Installation via side and rear cable entry
- Easy push and twist lockable bayonet mounting
- Operating temperature range from -25°C to +70°C
- Simple in and out wiring blocks
- Full range of accessories available



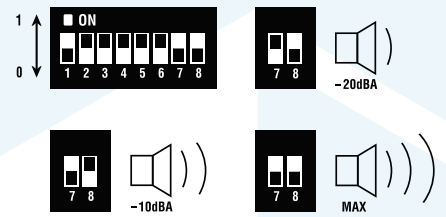
Colours available



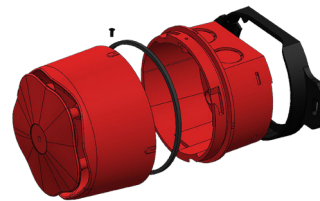
CONNECTION DIAGRAM



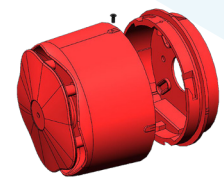
Switch bank



Sound selection 1 to 5, output level 7 & 8, 6 not used



Deep base with IP66 mounting accessory



Shallow base

THE BANSHEE EXCEL™ TECHNICAL SPECIFICATION

Termination:	Screw terminals for 0.28mm ² to 2.5mm ² wire conductor
EN54-3 Voltage Range:	24VDC (20VDC to 28VDC)
Operating Voltage Range:	9VDC to 30VDC* (switch 6 not used)
Current Consumption:	See Sound output table
Synchronisation:	Synchronised start
Operating Temperature:	-25°C to +70°C
Case Material:	Flame Retardant ABS
Environment Category:	Type A – Shallow base IP21C / Type B – Deep base IP66
Second Tone:	connect “*” terminal to -ve

Specifications shown with an * have not been verified to be EN54-3 compliant.



BANSHEE EXCEL™ AUDIBLE WARNING DEVICE

INSTALLATION

All installation to be carried out by a competent person

IP66 Deep Base Moulding (weatherproof)

- To maintain IP rating when using a deep base, use wall mounting bracket Part Number: MM08728, do not drill fixing holes in deep base.

Use suitably rated 20mm cable glands to fit cables or conduit via side knock-outs.

Fit 'O'-Ring seal between body and base.

Non-IP66 Deep Base

- Knock out the conduit/cable gland holes in side of deep base.
- Fit conduit or 20mm cable glands then screw the base to the mounting surface or BESA box.

Shallow Base Moulding

- Drill mounting holes in the bottom of base for screw fixings.
- Route cable through rear hole or side knock-outs.
- Screw the base to the mounting surface or BESA box.

All fixings

- Connect unit as shown in connection diagram.
- Place the Excel onto the base and turn clockwise to retain.
- To remove the Excel turn unit counter-clockwise.
- Where applicable, fit the security screw through the marked area in the side of the body assembly.

SOUND OUTPUT TABLE

No.	Sound Frequencies & Patterns	2nd Tone	Code 12345	Description	EN54-3 28Vdc	Typ SPL@1m on axis				Typ Current mA	
						12V	24V	12V	24V		
1	800Hz to 950Hz swept at 120Hz	4	0 0 0 0 0	Banshee Buzz LF	See notes	12V	24V	12V	24V	6	12
2	800Hz to 950Hz swept at 9Hz	4	1 0 0 0 0	Banshee Fast Sweep LF	✓	94	101	6	12	6	12
3	800Hz to 950Hz swept at 3Hz	4	0 1 0 0 0	Banshee Slow Sweep LF	-	94	101	6	12	6	12
4	Continuous at 900Hz	4	1 1 0 0 0	Banshee Continuous LF	-	94	101	6	12	6	12
5	830Hz to 970Hz swept at 9Hz	4	0 0 1 0 0	Banshee Fast Sweep LF (New)	-	95	101	6	12	6	12
6	800Hz to 970Hz swept at 1Hz	7	1 0 1 0 0	Medium Sweep LF	✓	96	101	6	12	6	12
7	Continuous at 950Hz	7	0 1 1 0 0	Continuous LF	-	96	102	6	13	6	13
8	Intermittent at 950Hz 1 sec on, 1 sec off	4	1 1 1 0 0	Back Up Alarm LF	-	96	102	6	14	6	14
9	Alternating 800Hz/1000Hz at 1Hz	4	0 0 0 1 0	Alternate LF	-	94	100	6	13	6	13
10	800Hz/1000Hz swept at 0.5 sec	4	1 0 0 1 0	Medium Sweep LF	-	95	101	6	12	6	12
11	Alternating tones 800/950Hz at 3Hz	4	0 1 0 1 0	Alternate LF	-	96	101	6	12	6	12
12	2400Hz to 2900Hz at 120Hz	15	1 1 0 1 0	Banshee Buzz HF	-	102	110	16	35	16	35
13	2400Hz to 2900Hz at 9Hz	15	0 0 1 1 0	Banshee Fast Sweep HF	-	103	110	17	35	17	35
14	2400Hz to 2900Hz at 3Hz	15	1 0 1 1 0	Banshee Slow Sweep HF	-	103	110	17	35	17	35
15	Continuous 2400Hz	15	0 1 1 1 0	Banshee Continuous HF	-	103	110	19	39	19	39
16	2450Hz to 3100Hz swept at 9Hz	15	1 1 1 1 0	Banshee Fast Sweep HF (New)	-	103	110	18	36	18	36
17	Intermittent at 2400Hz 1 sec on, 1 sec off	15	0 0 0 0 1	Backup Alarm HF	-	104	110	18	36	18	36
18	Alternating tones 2400/2900Hz at 3Hz	15	1 0 0 0 1	Alternate HF	-	104	110	16	36	16	36
19	500Hz rising to 1200Hz over 3.5 sec, silence 0.5 sec, repeat	4	0 1 0 0 1	Slow Whoop	✓	95	101	6	12	6	12
20	1200Hz falling to 500Hz over 1 sec, silence 10mS, repeat	4	1 1 0 0 1	Din Tone (DK)	✓	93	100	5	10	5	10
21	554Hz for 100mS and 440Hz for 400mS	4	0 0 1 0 1	French Fire Sounder	✓	90	96	4	7	4	7
22	420Hz repeating 0.625 sec on, 0.625 sec off	4	1 0 1 0 1	Australian Alert Signal	-	89	95	3	6	3	6
23	500Hz to 1200Hz sweeping 3.75 sec on, 0.25 sec off	4	0 1 1 0 1	Australian Evacuation Signal	-	95	103	6	12	6	12
24	950Hz for 0.5 sec on, 0.5 sec off for 3 phases, silence for 1.5 sec and repeat	4	1 1 1 0 1	US Temporal Tone LF	-	95	101	5	10	5	10
25	2400Hz for 0.5 sec on, 0.5 sec off for 3 phases, silence for 1.5 secs and repeat	15	0 0 0 1 1	US Temporal Tone HF	-	104	110	13	26	13	26
26	Intermittent 660Hz 150mS on, 150mS off	26	1 0 0 1 1	Swedish Tone (Fire)	-	90	96	3	6	3	6
27	Continuous 660Hz	27	0 1 0 1 1	Swedish Tone (All Clear)	-	91	97	5	9	5	9
28	Intermittent 970Hz 500mS on, 500mS off	28	1 1 0 1 1	ISO8201 LF	-	93	99	5	10	5	10
29	Intermittent 2400Hz 500mS on, 500mS off	29	0 0 1 1 1	ISO8201 HF	-	103	110	13	27	13	27
30	Yodel 800Hz/1000Hz, 0.25 sec each frequency	31	1 0 1 1 1	BT Banshee (FP1063,1)	-	93	100	6	12	6	12
31	Continuous 1000Hz	31	0 1 1 1 1	BT Banshee (FP1063,1)	-	90	96	6	14	6	14
32	Bell Tone	32	1 1 1 1 1	Bell Tone	-	96	101	12	25	12	25

- Volume control providing up to 20dB attenuation. All frequencies are nominal.
- Column EN54-3 shows tones approved under the Construction Products Regulation.
- Polar diagram information is available in the technical manual, available on request.

Every care has been taken in the preparation of this product release but no liability whatsoever can be accepted for the use of the information contained therein. Hosiden Besson Ltd reserve the right to change or amend any design features in line with our policy of continuing development and improvement.