

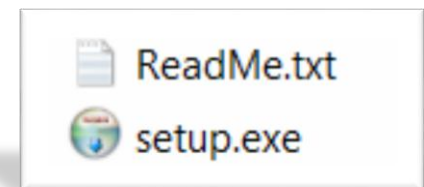
Setting up FireClass Checker within FireClass Express using the Com0Com serial port emulator application

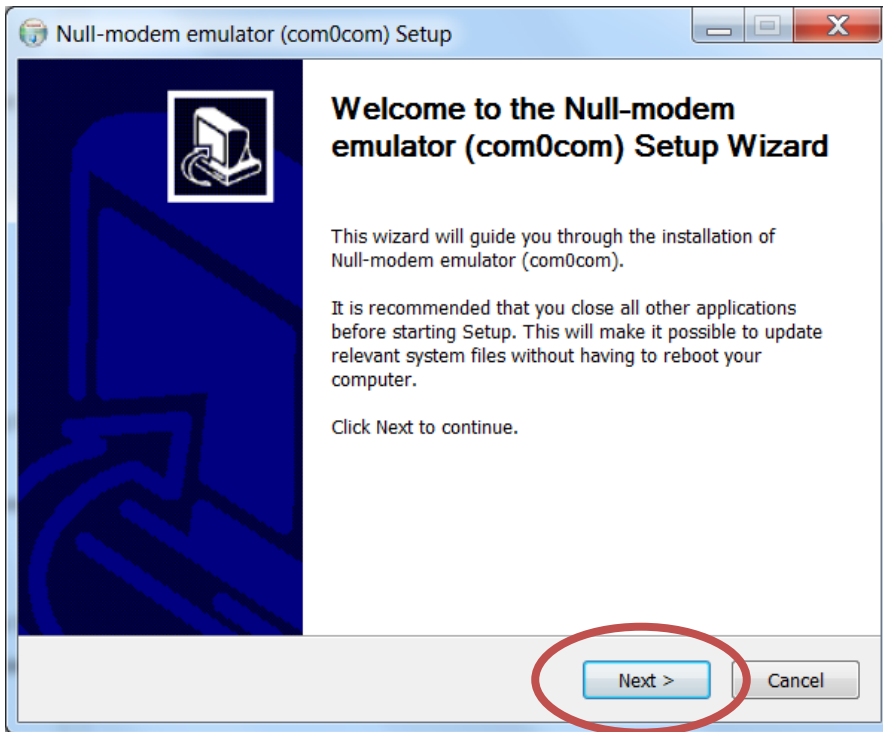


1. Download the Com0Com serial port emulator application from <http://sourceforge.net/projects/com0com/>

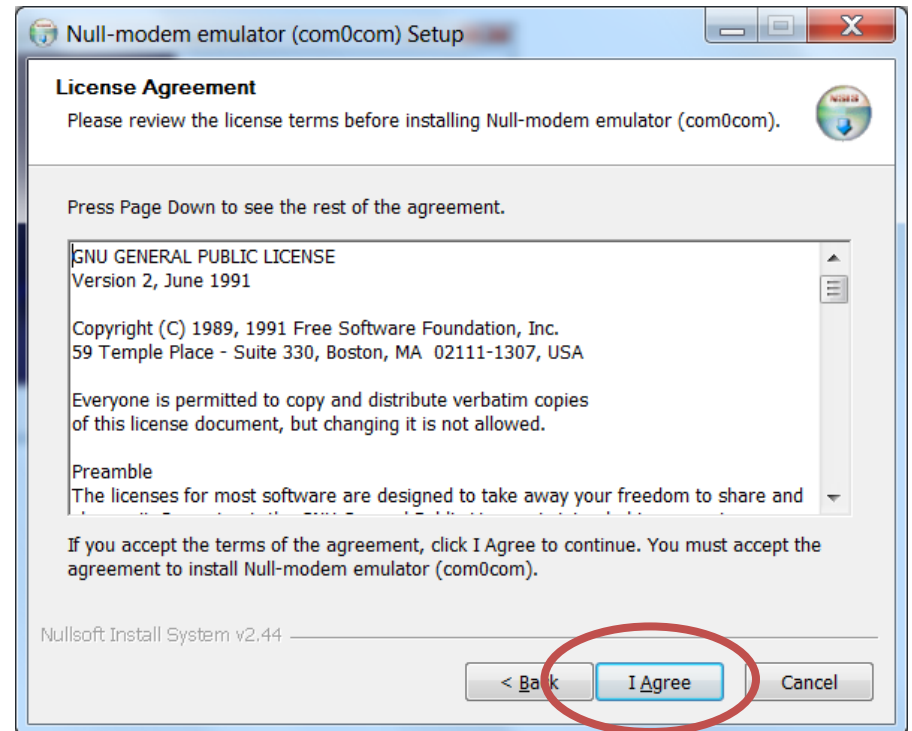
The 64bit signed version can be downloaded from <http://sourceforge.net/projects/extradio/files/latest/download>

2. Run the setup application after unzipping the zip file shown above

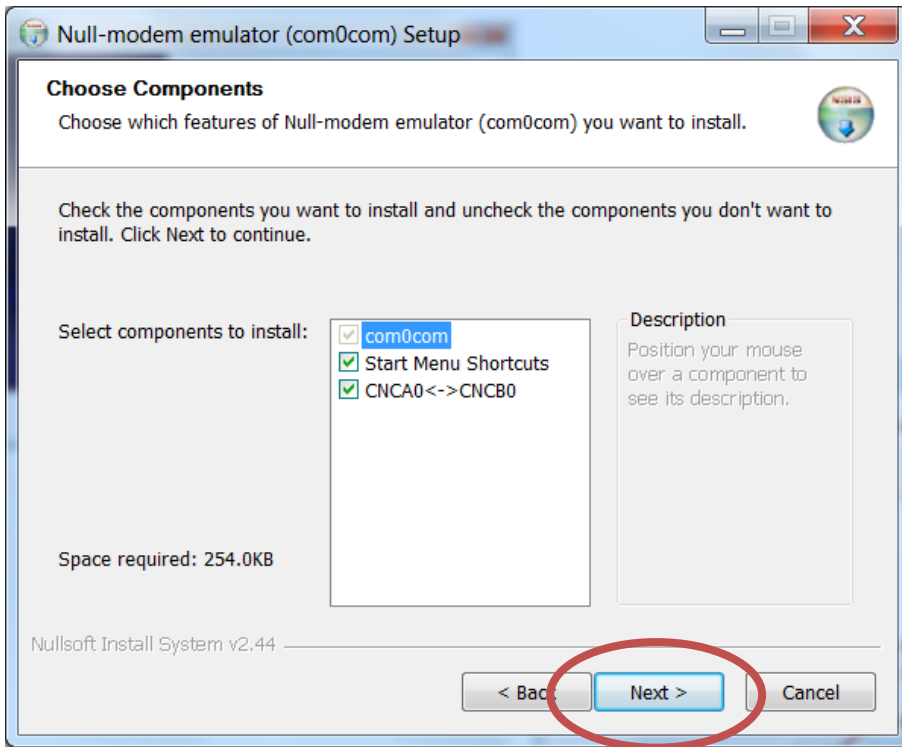




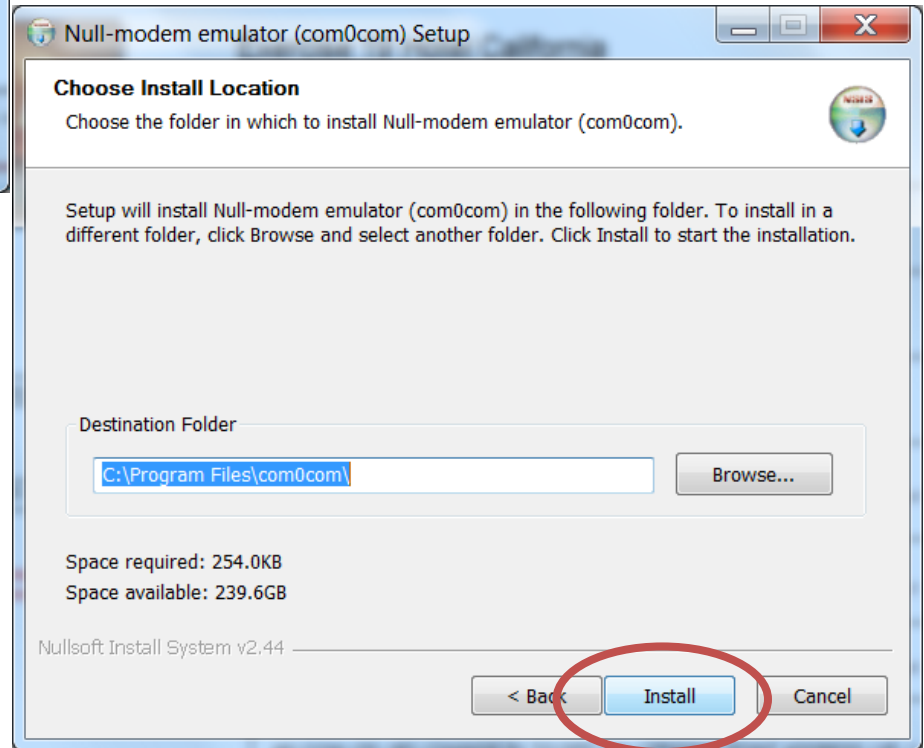
3.



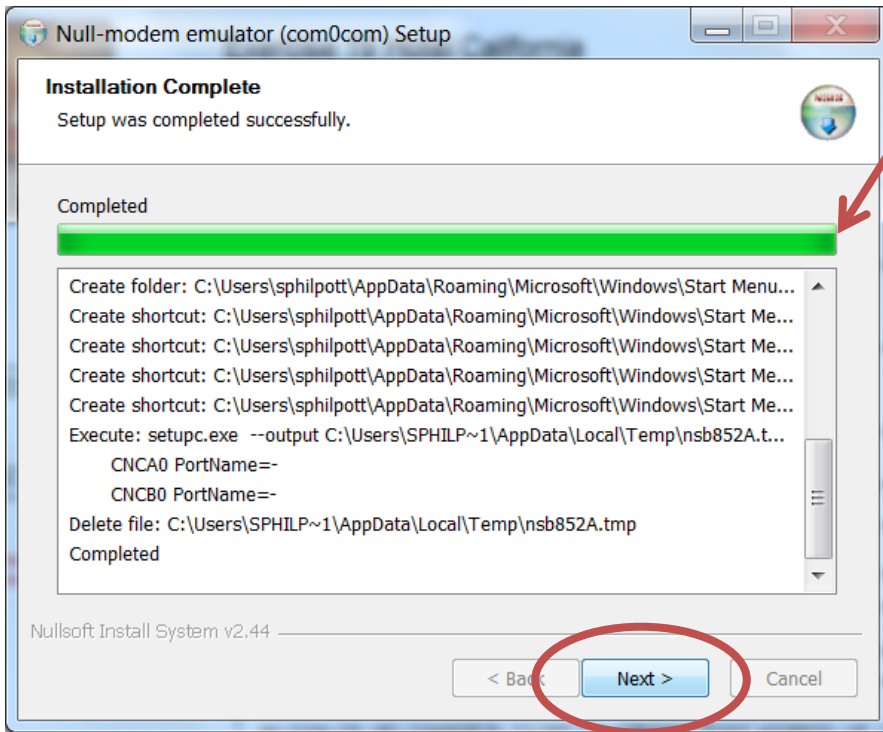
4.



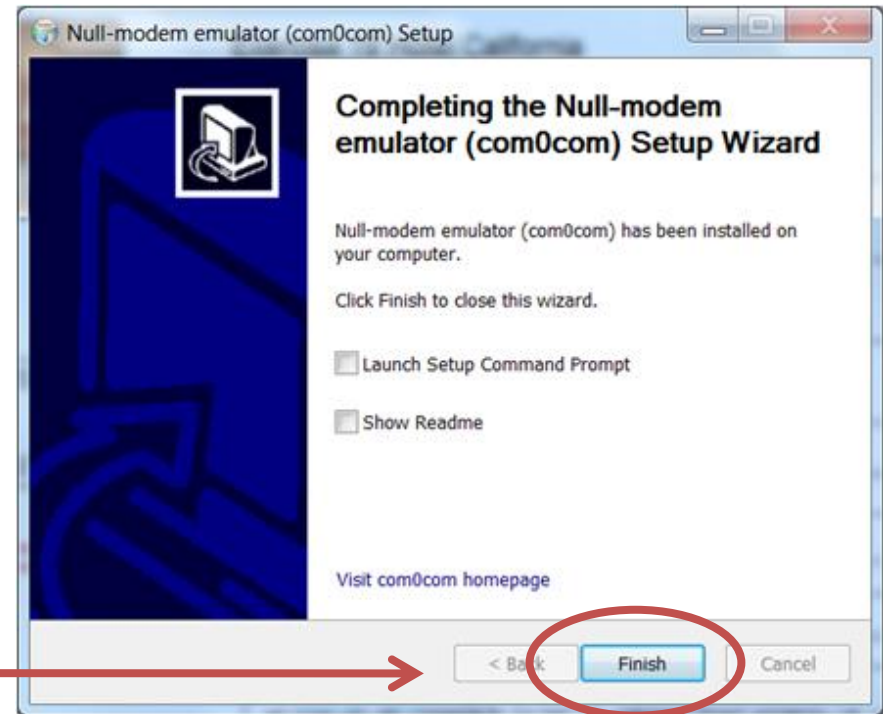
5.



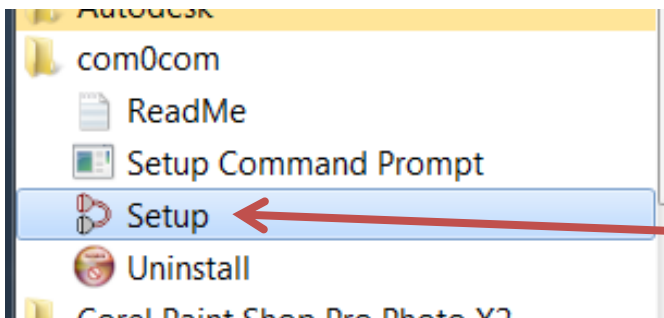
6.



7. You will see a DOS window appear on your screen for a short while before seeing this screen



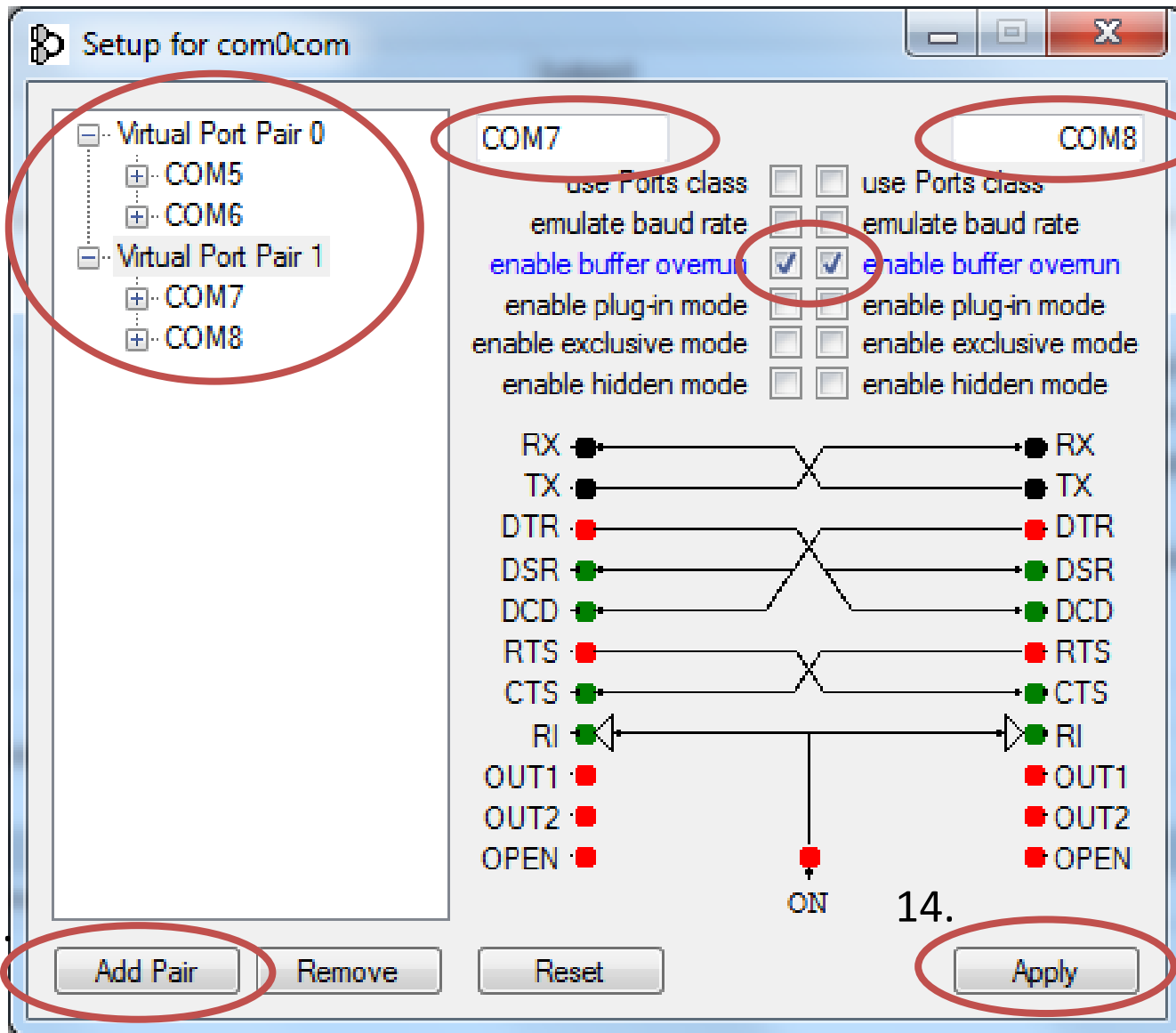
8. Do not click on 'Launch Setup Command Prompt', just click 'Finish'



9. Now run the Setup application from the windows 'Programs' menu

11. Type in an unused COM port (1-8)

12. Type in another unused COM port (1-8)

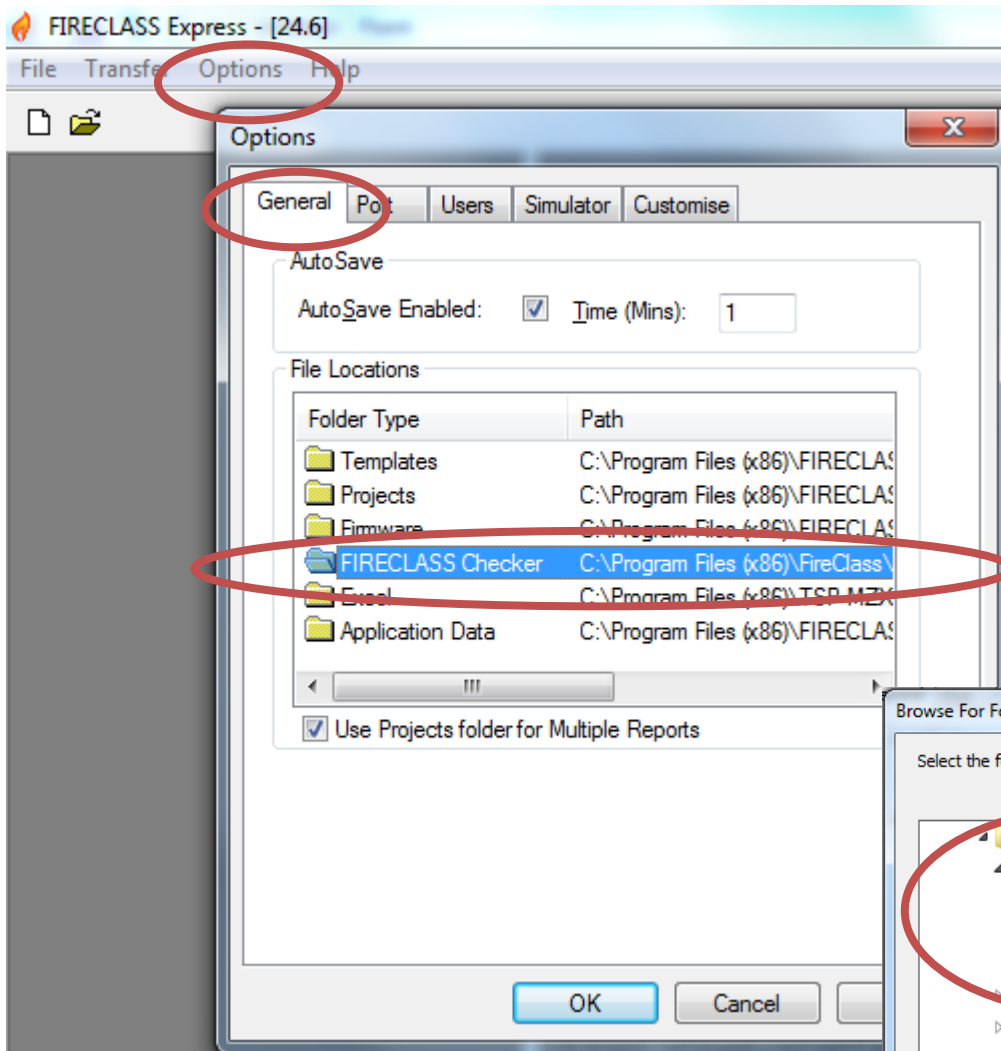


13. Repeat to create a second pair

10.

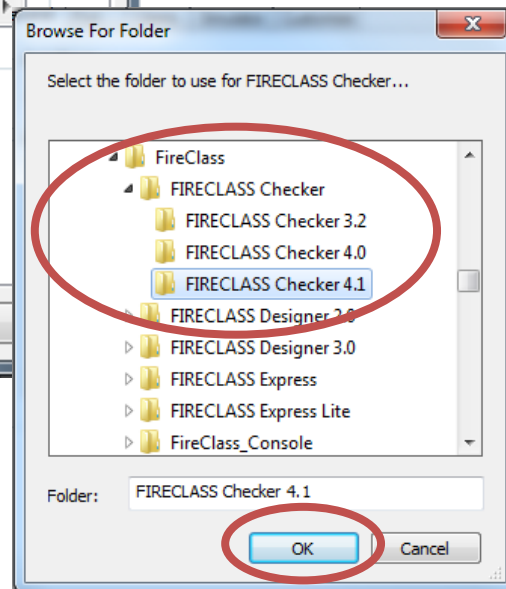
14.

15. Download and install the latest FireClass Checker from www.fireclass.co.uk



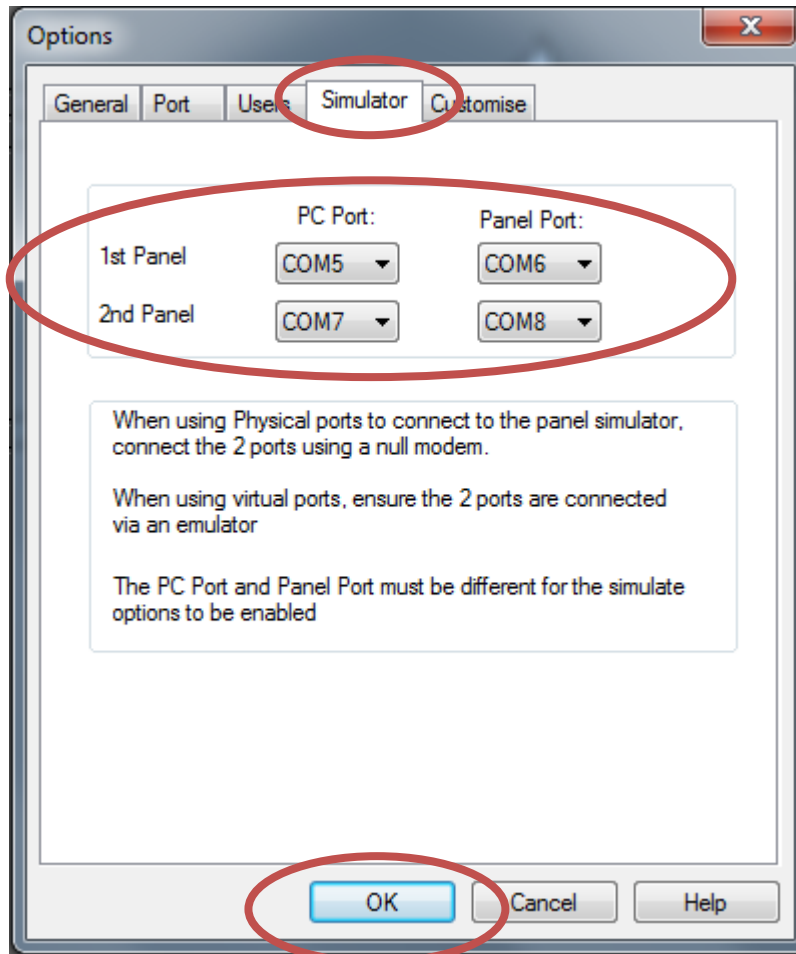
16. Open FireClass Express, then click on 'Options'

17. Double click on the FIRECLASS Checker folder type, as shown, then navigate to C:\Program Files\FireClass and select FireClass Checker 4.1 in the folder shown on the left



19.

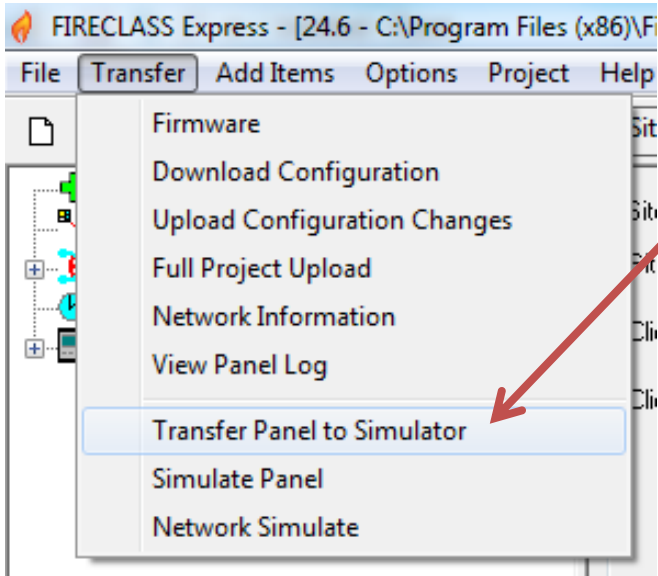
18. Now click OK.



22.

20. Now click on the 'Simulator' tab within 'Options'

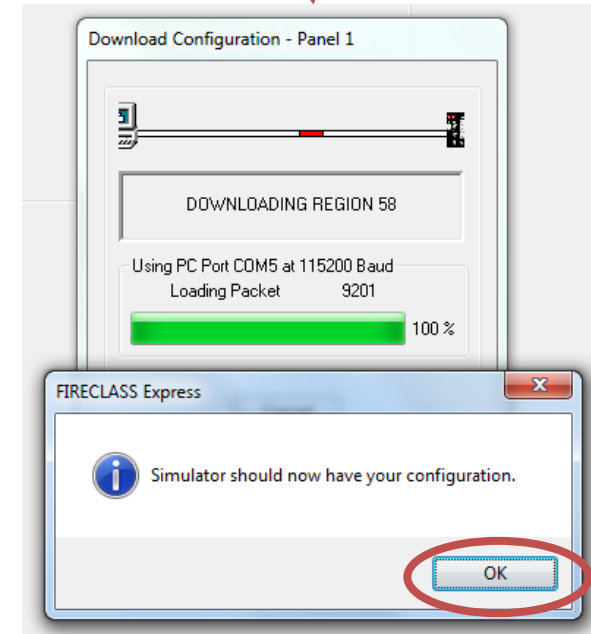
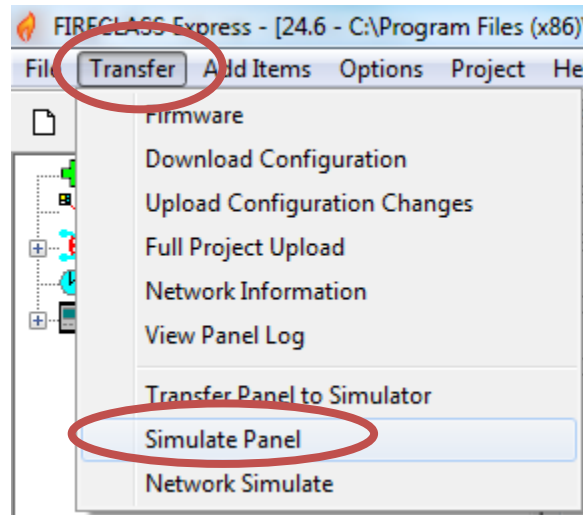
21. Select the four COM ports you had configured within the com0com setup application



23. Click on the 'Transfer' drop down menu item, then click on 'Transfer Panel to Simulator'

24. You will see a 'Downloading' window appear on your screen for a short while before you are then prompted to press the OK button

25. Now click on the 'Transfer' drop down menu item again, then click on 'Simulate Panel'



26. FireClass Checker will now open. Arrange the windows, as shown below.

