

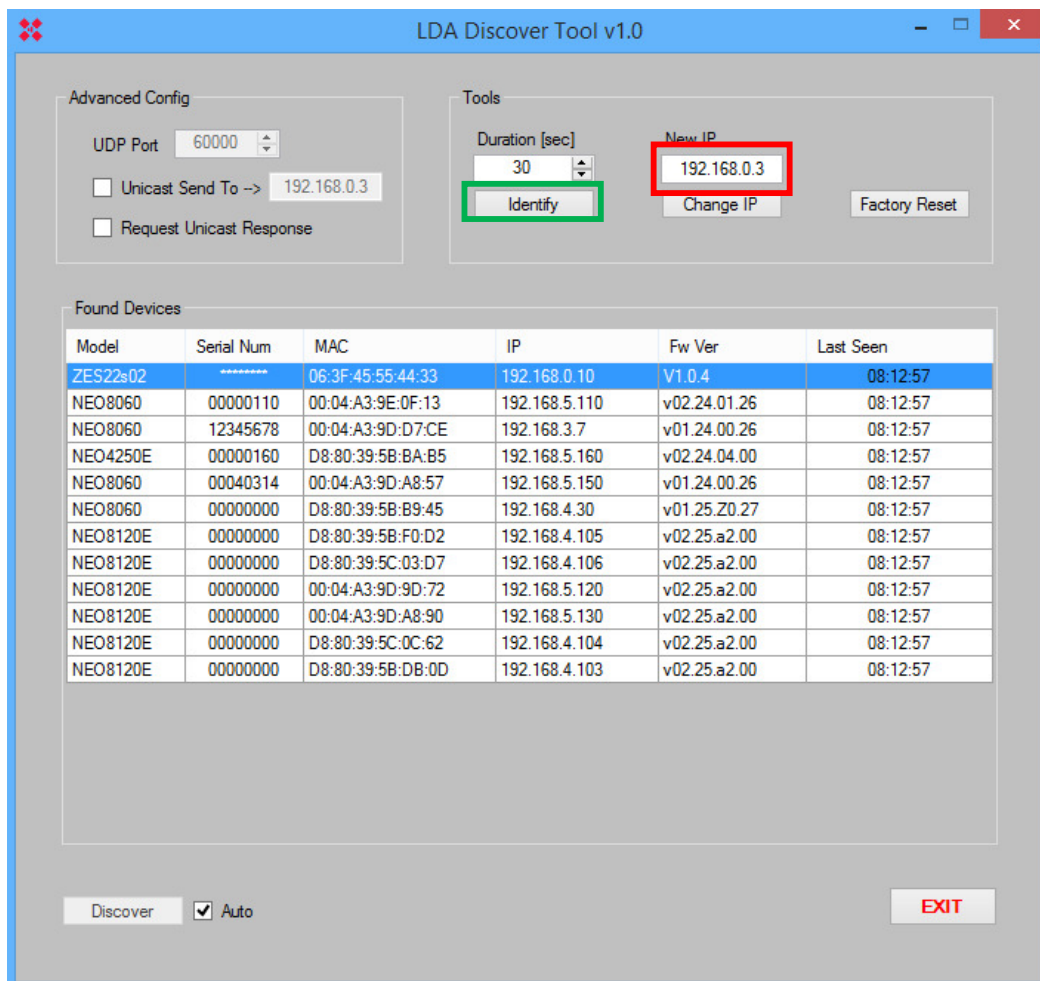
## LDA DISCOVER TOOL v1.0

The LDA Discover Tool v1.0 is an application to find any NEO device or ZES-22 matrix (firmware v1.0.4) in the local network, without set the IP range of the computer in the same of the devices.

To change the IP address of ZES-22 matrix or NEO devices:

- Open the application and wait for few seconds while the list is completed.
- Select the device
- Put new IP address in the textbox and push in “Change IP” button.

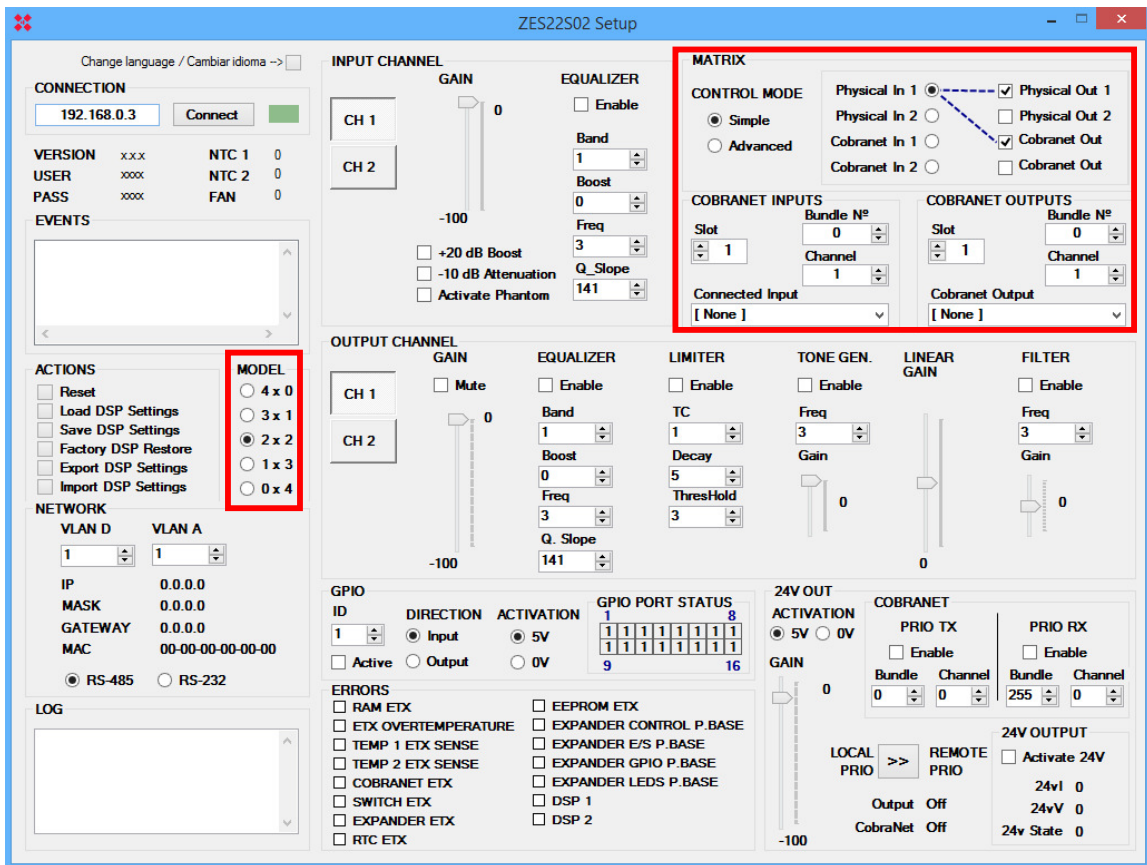
If you have any doubt about which device are you selecting in the list, please use the “Identify” button to active the leds of the device and detect the exactly unit.



## LDA ZES22S02 Setup

The LDA ZES22S02 Setup is the application to manage the ZES-22 matrix:

- Select the configuration model: in “MODEL” tab you can select the number of inputs and outputs of the matrix, 4x0 (four inputs), 3x1 (three inputs and one output), 2x2 (two inputs and two outputs), 1x3 (one input and three outputs) and 0x4 (four outputs).
- Set CobraNet configuration: in “MATRIX” tab you can select the transmission and reception bundles and channels for the digital audio configuration.



For any question, please contact LDA Support Department.  
[support@lda-audiotech.com](mailto:support@lda-audiotech.com)