

## FC08

### Steel Enclosure Features

- UL 864 ETL Listed Steel Enclosure
- Color: Red
- Ample knockouts accommodating 1" conduits for convenient physical and environmental access
- Optional hole for a cam lock
- Dimensions (H x W x D)  
7.9" x 8.08" x 1.89"  
(200.6mm x 205.2mm x 48.00 mm)
- Capacity Product Weight 2.24 lbs. (1.02kg)



## FC08

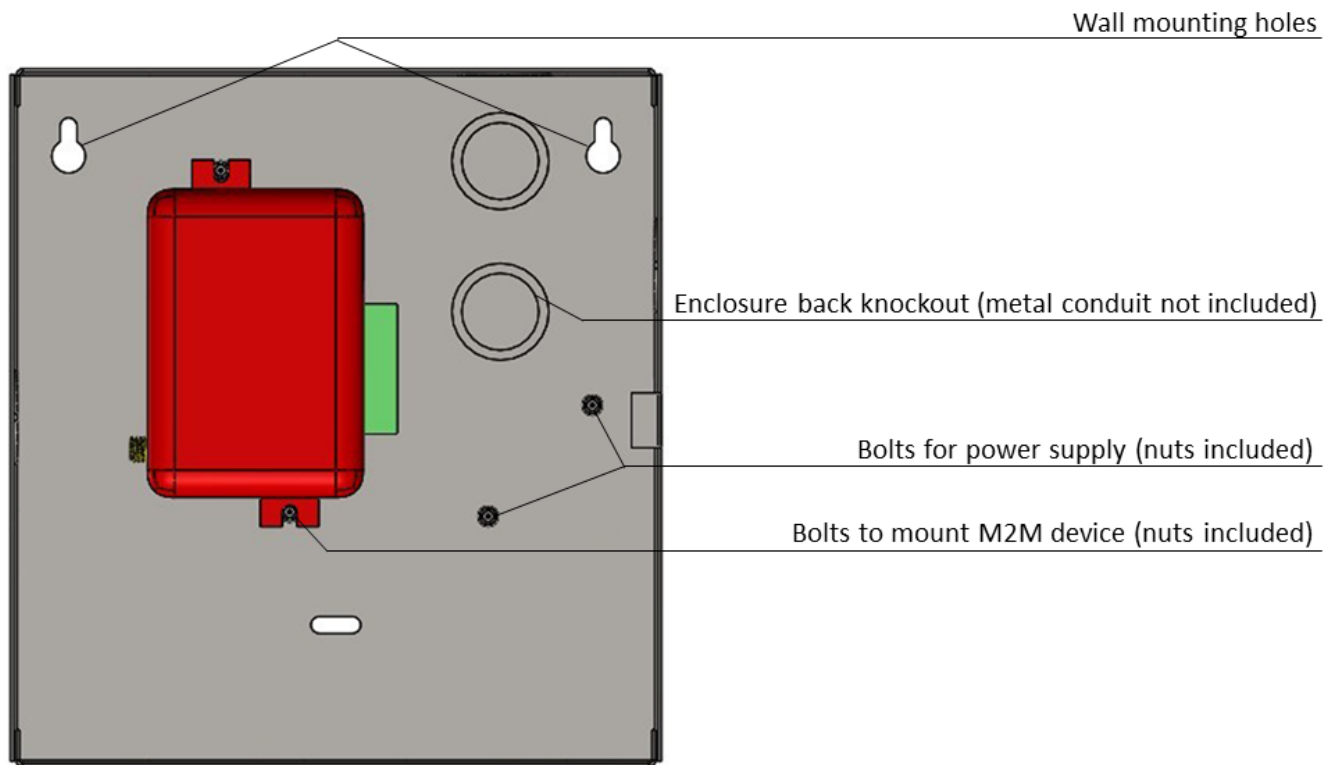
### Steel Enclosure Compatibility List

FC08 Steel enclosure supports:

- M2M MQ03-LTE-M-FIRE communicator

# FC08

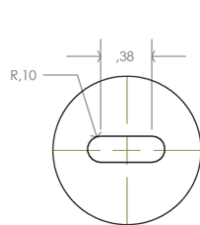
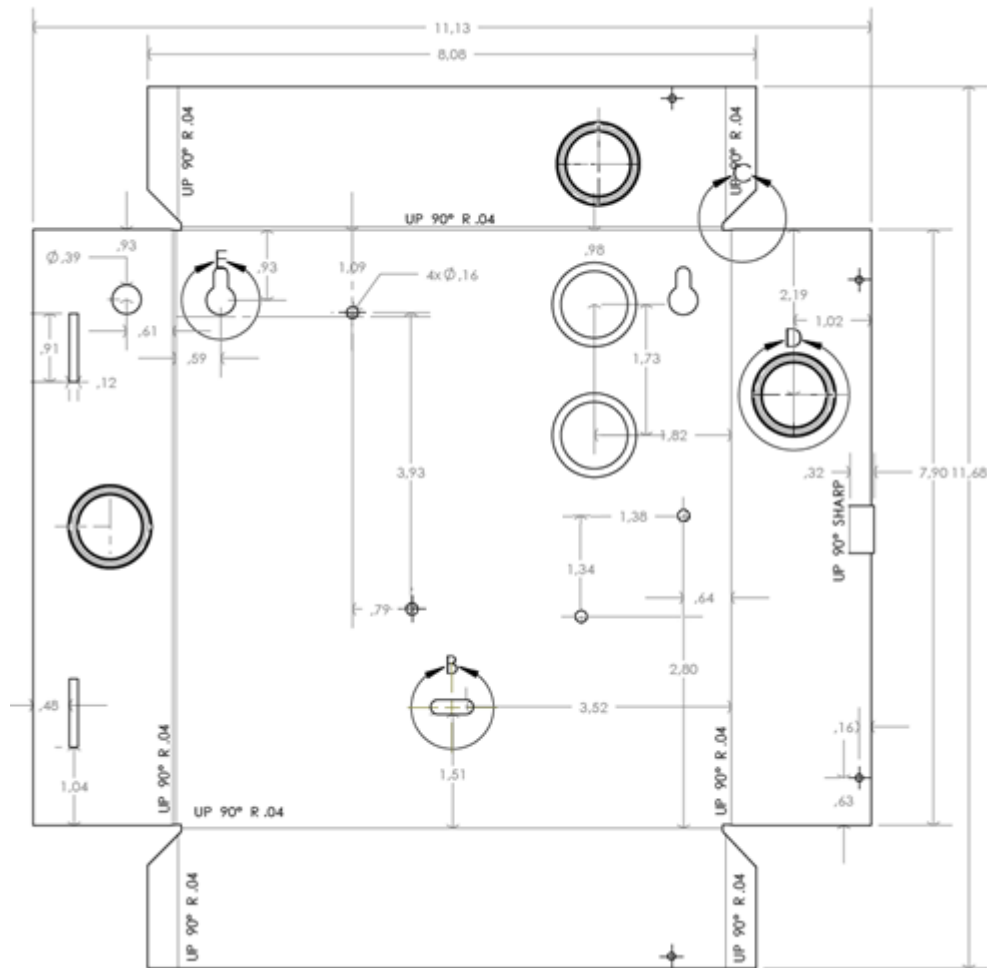
## Steel Enclosure Mounting Schematic



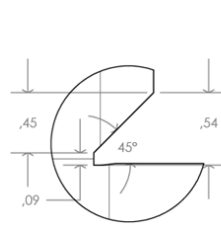
# FC08

## Steel Enclosure Dimensions and Drawing

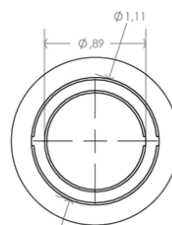
Dimensions (H x W x D approximate)  
7.9" x 8.08" x 1.89" (200.6mm x 205.2mm x 48.00 mm)



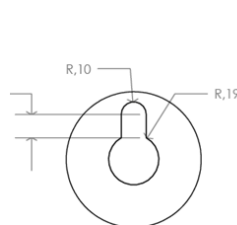
DETAIL B



DETAIL C



DETAIL D



DETAIL E