

# Serial Adaptor Isolated USB to TTL Device Driver - Installation Guide

## 1 Introduction

This installation guide describes a simple, step-by-step procedure to enable the supplied Serial Adaptor to work using a USB 2.0 port on your PC.

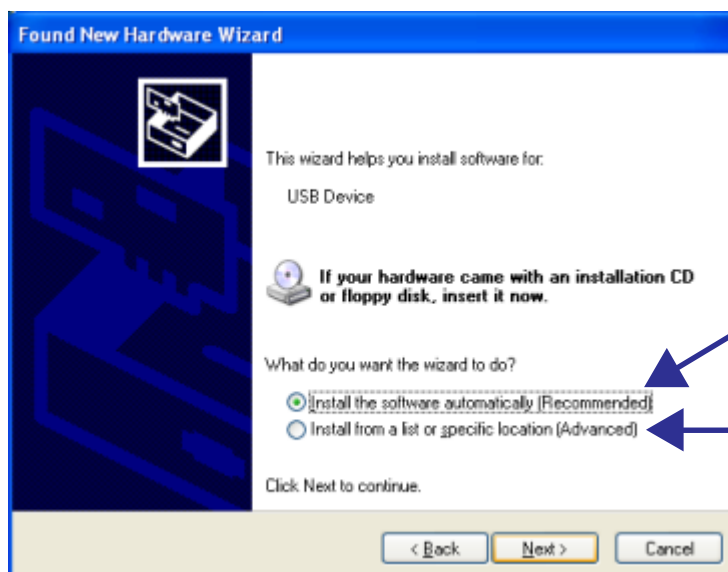
Installation requires the Serial Port to USB 2.0 adapter to be connected to your PC during the installation of the driver software supplied on the CD-ROM (Windows XP™ or Windows® 7).

## 2 Installing the Device Driver Software (Windows XP™)

- a. First, connect the device to the USB port on your PC. Wait until the 'Found new Hardware Wizard' screen appears (see below) and select the option: 'No, not this time' and then press 'Next'.



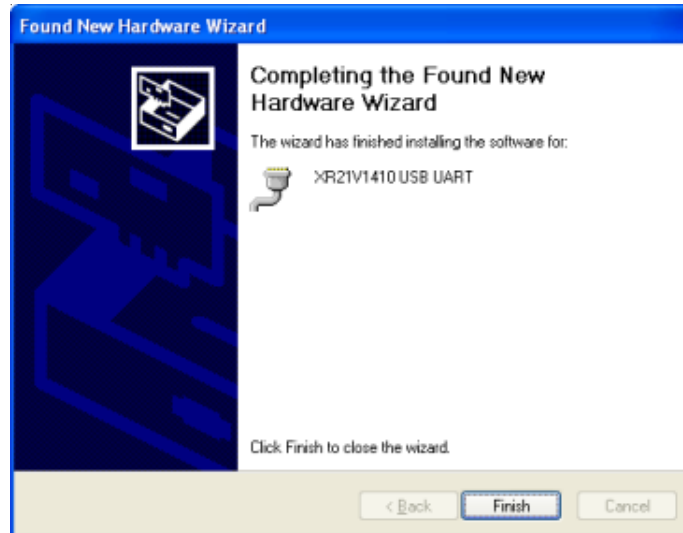
- b. Wait for the screen below to appear and then insert the supplied CD-ROM with the required driver software and wait for your PC to scan the CD - **DO NOT select 'Next' at this time.**



Insert CD to install driver software and leave 'Install software automatically' selected **before** selecting 'Next'

If installing the driver software from a remote location, e.g. over a network, select 'Install from a list or specific location' option before selecting 'Next'.

- c. Once the driver software installation is completed the following screen is displayed.

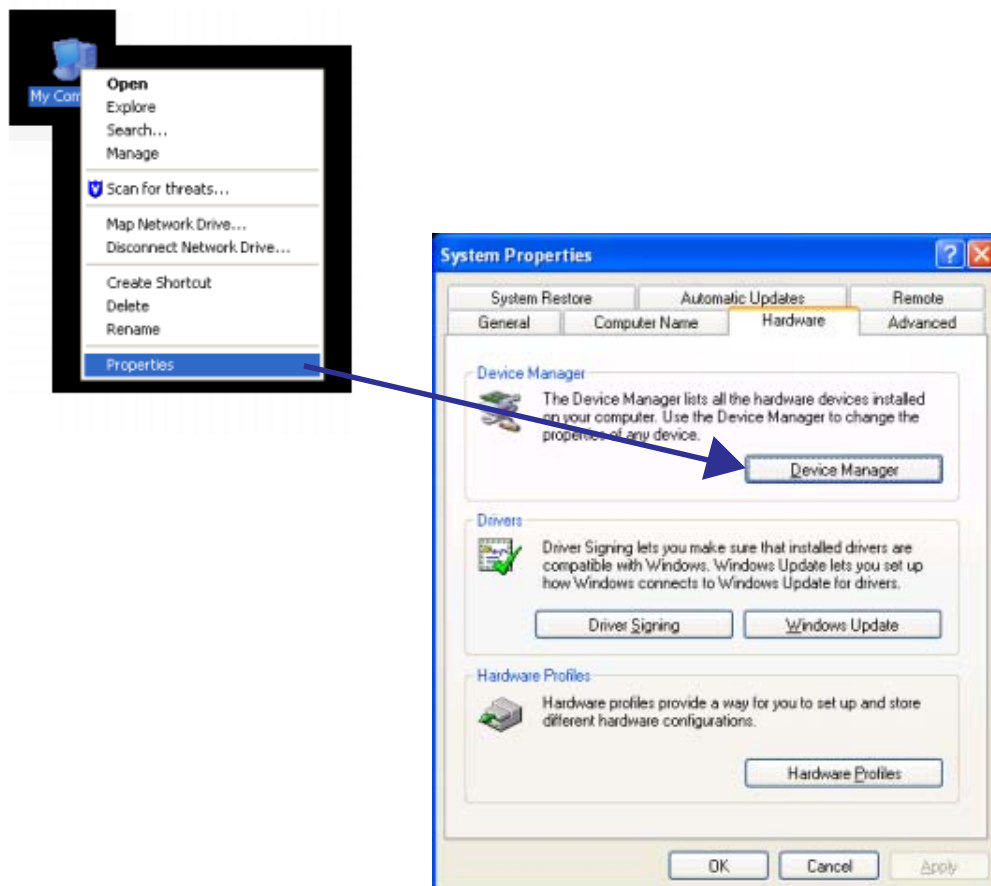


- d. Select 'Finish'.

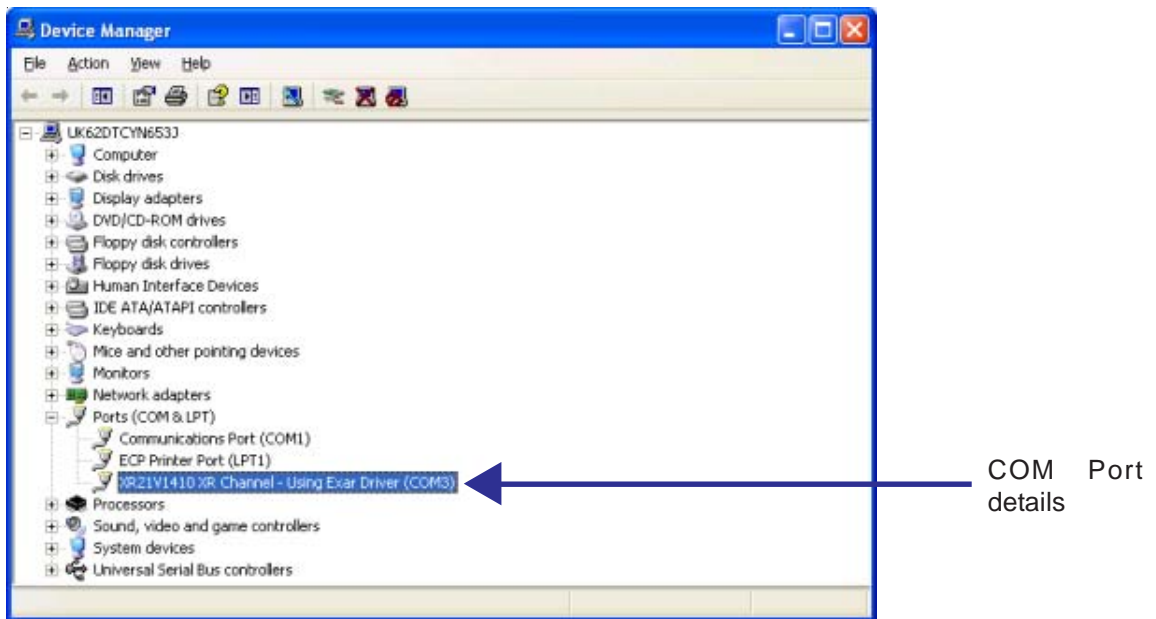
## 2.1 Review/Change the COM Port Setting

To find out the COM Port that was assigned to the Serial adapter and change, if required, to another port setting proceed as follows:

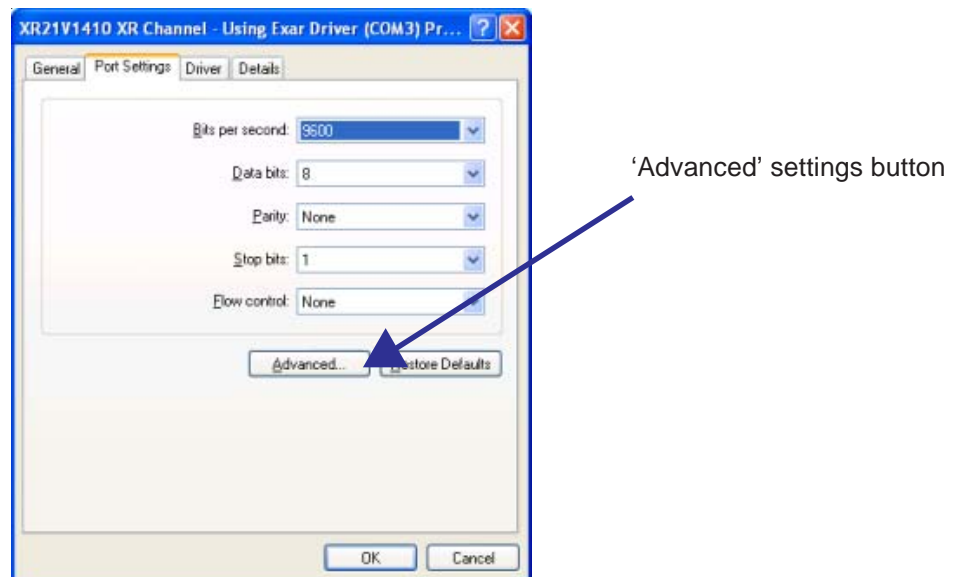
- Find the 'My Computer' icon on your PC's desktop and right-click this with your mouse.
- Select 'Properties'.
- In the 'System Properties' window select the 'Hardware' tab.
- Select the 'Device Manager' button.



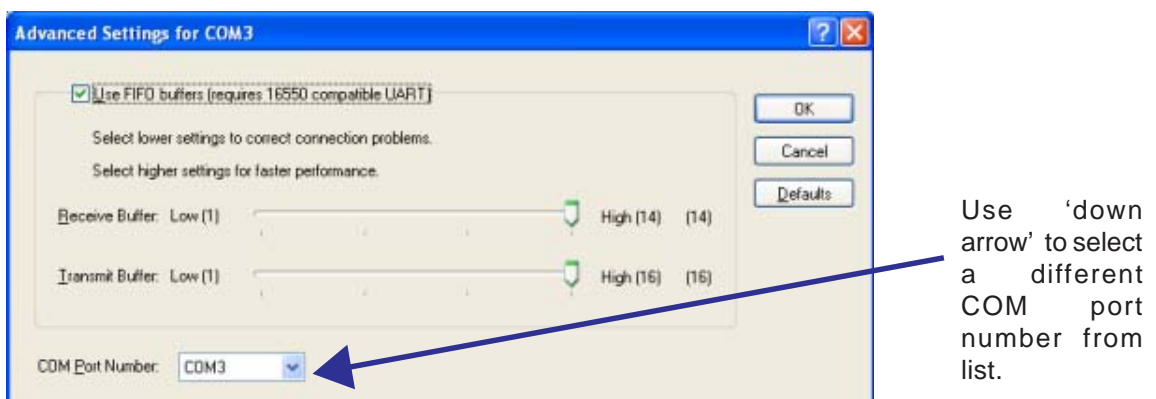
- v. In the 'Device Manager' window select from the list and expand (click on the '+' sign) the 'Ports (COM & LPT)' tree. Now look for XR21V1410 USB UART - the COM Port will be in brackets at the end of this description, e.g. XR21V1410 USB UART(COM3).



- vi. To change the assignment of the driver COM Port double-click the device and then select the 'Port Settings' tab, as below:



- vi. At the bottom-left of the 'Advanced settings for COMn' window click on the down arrow to display a list of available COM ports. Select a different port and then select 'OK'. Check that this has changed in the 'Device Manager' window.



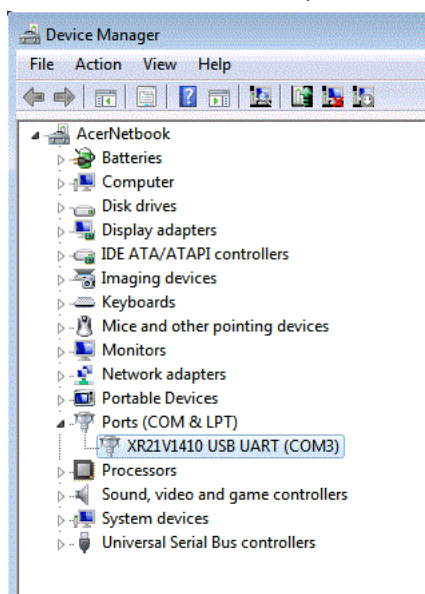
### 3 Window® 7 Operating System - Installation Notes

When installing the device driver on a platform operating under Windows® 7, you need to be aware of the following.

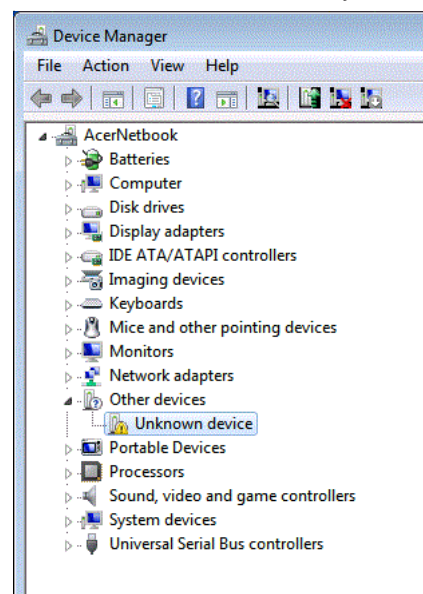
- Connect the USB adapter (PN: 020-891) to the PC. The Windows® 7 operating system will try to install the drivers automatically.
- Next you will need to check the driver was installed correctly. To do this, go to the Windows® 7 Start button and type 'devmgmt.msc' in the Search box and then press the Enter key.
- Once Device Manager is open look for the USB driver 'XR21V1410 USB UART (COMn)' (see note), listed under Ports (COM & LTP). If you cannot see it, the driver did not install correctly and an 'Unknown Device' is listed under 'Other Devices'.

**Note:** COM 'n' is the port used by the USB adapter device and so will vary between platforms.

Installed correctly

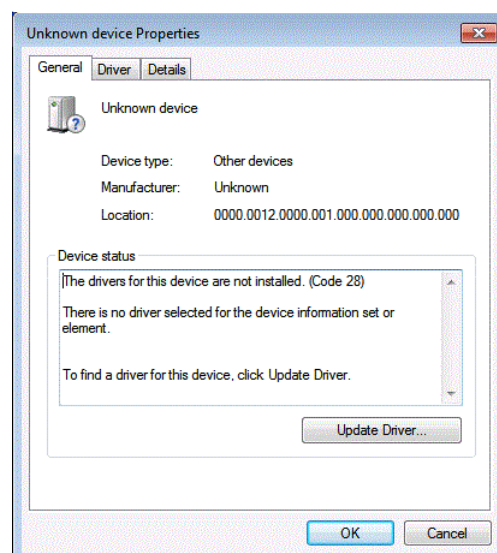


Not installed correctly

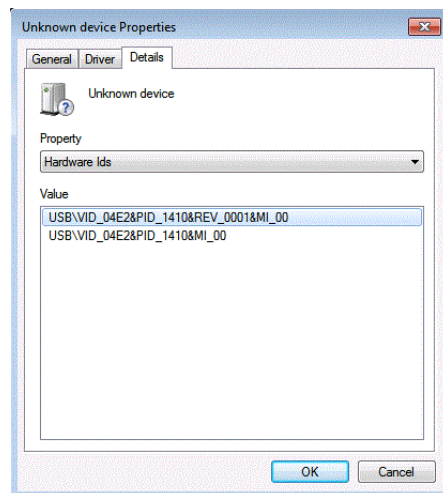


- Right-click on the unknown device and select the Properties tab.

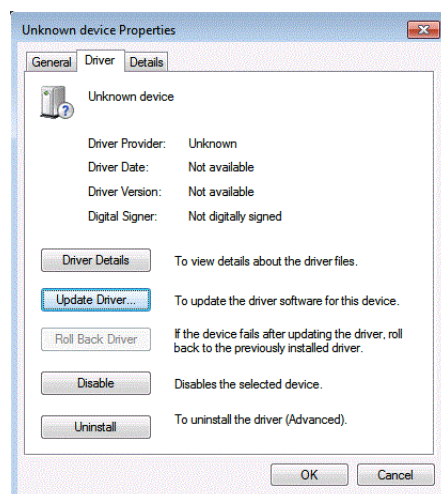
**Note:** If many unknown devices are listed you will need to check the Device vendor ID (VID) and Product ID (PID) for the correct device - see next step for more information.



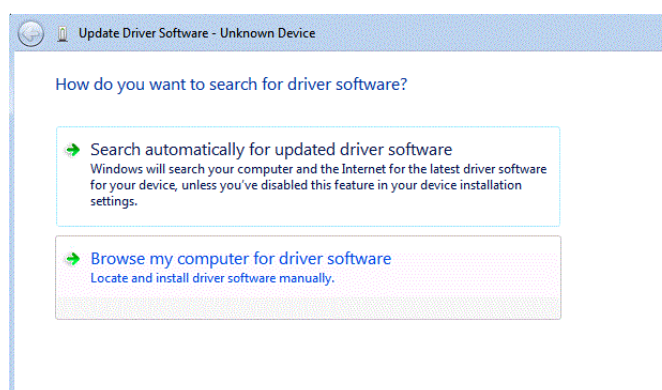
- e. Select the Details Tab and check that the Device vendor ID (VID) is '0x04E2' and Product ID (PID) is '1410'. If these details match then this is the correct device. If these details do not match return to the previous step.



- f. Select the Driver tab and then select 'Update Driver'.

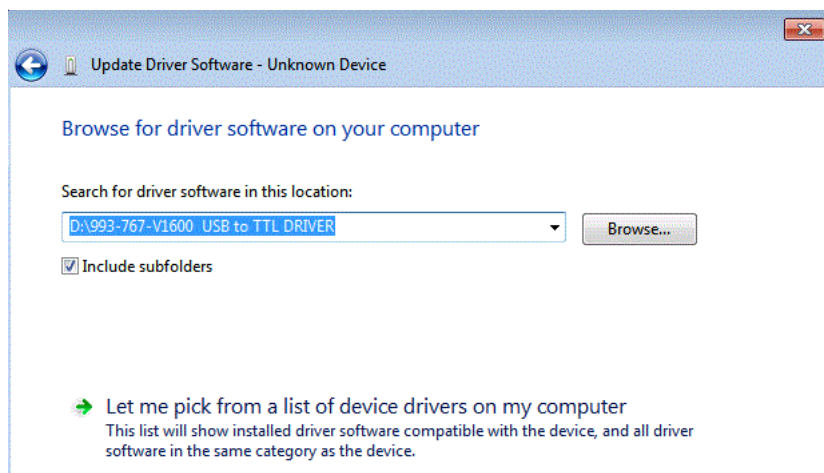


- g. Select 'Browse my computer for driver software'.

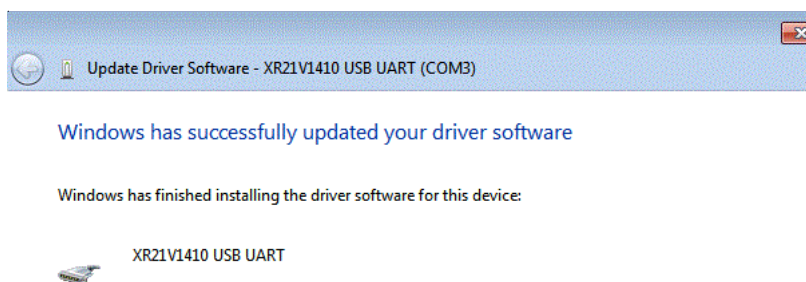




- h. Select 'Browse' and then select the '993-767-Vxxx USB to TTL DRIVER' folder on the CD-ROM - make sure that the 'Include subfolders' box is checked. Press 'Next'.



- i. The driver should now be installed successfully - Windows® 7 advises that the driver has been installed successfully and a screen, like the one below, will be displayed to confirm this.



- j. Go back to the Device Manager screen and look for the USB device 'XR21V1410 USB UART (COMn)' under 'Ports (COM & LTP)'. In this example COM Port 3 is used.

