

INSTALLATION INSTRUCTIONS FOR EMA1224FR AND EMA1224FW ELECTRONIC SOUNDER

GENERAL DESCRIPTION

The EMA1224Fx sounder is a high output electronic sounder with 16 different tones. The sounder's first and second stage sounds are achieved by polarising three - wires, sixteen different tone combinations are selectable via integral DIP switches from fourteen first stage sounds. Sound output and current vary with the sound selected. See Fig 3 for details of switch settings

Three styles of sounder base are available to allow maximum flexibility of use. The low profile base is sealed to IP44 and offers rear or side cable entry. The surface base allows wiring glands to be mounted directly to the base, and offers an ingress protection rating of IP55. A sealed version of the surface base offers an ingress protection rating of IP66. 'In' and 'Out' terminals are provided for each contact to allow multiple sounders to be wired without the need to put two wires in one screw terminal.

Compatible Bases	Part No.	Description	Part No.	Description
	ELPBR	Low Profile IP44 Red	ELPBW	Low Profile IP44 White
	ESBR	Standard Profile IP54 Red	ESBW	Standard Profile IP54 White
	ESBRS	Standard Profile +IP66 Sealing Kit	ESBWS	Standard Profile +IP66 Sealing Kit

SPECIFICATIONS	12Vdc	24Vdc	Comments
Voltage Range	9 - 15	15 - 33	
Sound Output	97dB(A)	103dB(A)	at 1m at 800Hz at 12V and 24V respectively
Temperature Range	See comments	See comments	-30°C to +70°C (93%RH at 55°C)
Current	12mA	20mA at 24V	
Tones	See comments	See comments	800Hz Continuous 800Hz / 1000Hz Dual Tone 2400Hz Continuous 2.5 mm ²
Maximum wire size	See comments	See comments	

WIRING DIAGRAM

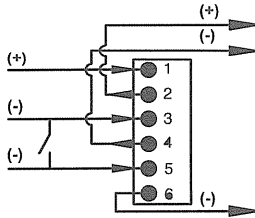


Fig 1

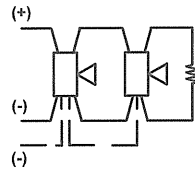


Fig 2

STONE SELECTION

1	2	3	4	1	Hz	S	2	Hz	S
☐	☐	☐	☐	500	1200	.015	1200	500	0.10
☐	☐	☐	☐	2400	2400	—	800	1000	0.05
☐	☐	☐	☐	1200	0	0.02	1200	500	0.10
☐	☐	☐	☐	1200	500	0.10	1200	500	0.10
☐	☐	☐	☐	800	800	—	800	1000	0.05
☐	☐	☐	☐	500	1200	0.50	800	1000	0.05
☐	☐	☐	☐	800	1000	0.05	800	1000	0.05
☐	☐	☐	☐	2400	0	0.05	1200	500	0.10
☐	☐	☐	☐	500	1200	0.12	1200	500	1.00
☐	☐	☐	☐	2400	2400	—	800	1000	0.50
☐	☐	☐	☐	1200	0	0.50	1200	500	1.00
☐	☐	☐	☐	1200	500	1.00	1200	500	1.00
☐	☐	☐	☐	800	800	—	800	1000	0.50
☐	☐	☐	☐	500	1200	4.0	800	1000	0.50
☐	☐	☐	☐	800	1000	0.50	800	1000	0.50
☐	☐	☐	☐	2400	0	0.50	1200	500	1.00

Fig 3