



***User manual***

***FLASHPROGRAM***

### CONTENT

- CONTENT
- INTRODUCTION
- SOFTWARE INSTALLATION
- SETUP FLASHPROGRAM
- RS232 CONNECTION
- SETUP IDR REPEATER BEFORE DOWNLOAD
- DOWNLOADING
- REPEATER MANIPULATIONS AFTER DOWNLOAD

## ➤ INTRODUCTION

In the past, it was always necessary to replace eprom's when a software upgrade was necessary.

Since some time, there are FLASH MEMORY eprom's available. These eprom's are re-programmable by means of a PC without the need of changing hardware. This has got the advantage that software can easily be transmitted towards customers trough the internet.

Notifier tries to use this new technology in the latest generation of products. The first products equipped with this technology will be IDR repeaters and NF30/NF50 panels.






This manual gives a practical explanation on how you should install, and use the tools to upgrade FLASH MEMORY chips.

## ➤ SOFTWARE INSTALLATION

To be able to download software towards a panel, it's necessary to install a program first. This program is named FLASHPROGRAM.

To install this program, create a folder on your hard drive.  
Copy the file FLASHPRG.ZIP into this new folder.  
Unzip with WINZIP the files to this folder.

After Unzipping, you will find the following files:

| Naam   | Grootte | Type                      |
|--|---------|---------------------------|
|  FLASH-Manual.pdf | 557 kB  | Adobe Acrobat Document    |
|  FlashProgram.ini | 1 kB    | Configuratie-instellingen |
|  XXXXXXXX.hex     | 349 kB  | HEX-bestand               |
|  README.txt       | 1 kB    | Tekstdocument             |
|  FlashProgram.exe | 500 kB  | Toepassing                |

The file FLASH-MANUAL.pdf contains the manual you are reading at this moment.

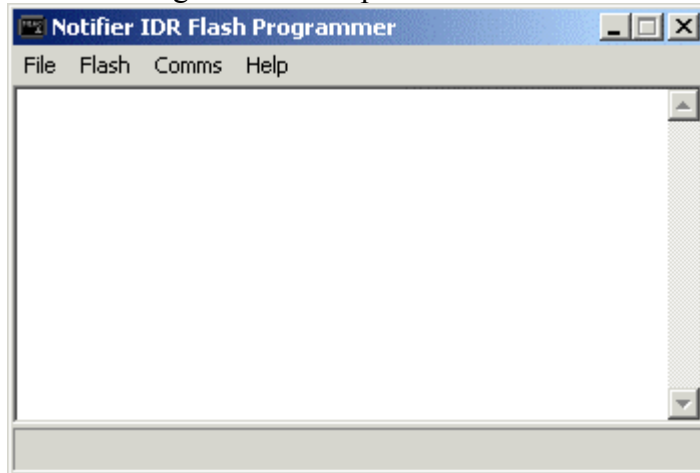
The File Flashprogram.exe is the program you will use to download the software towards the panel

All software files to download into your panel are in HEX format.

### ➤ SETUP FLASHPROGRAM

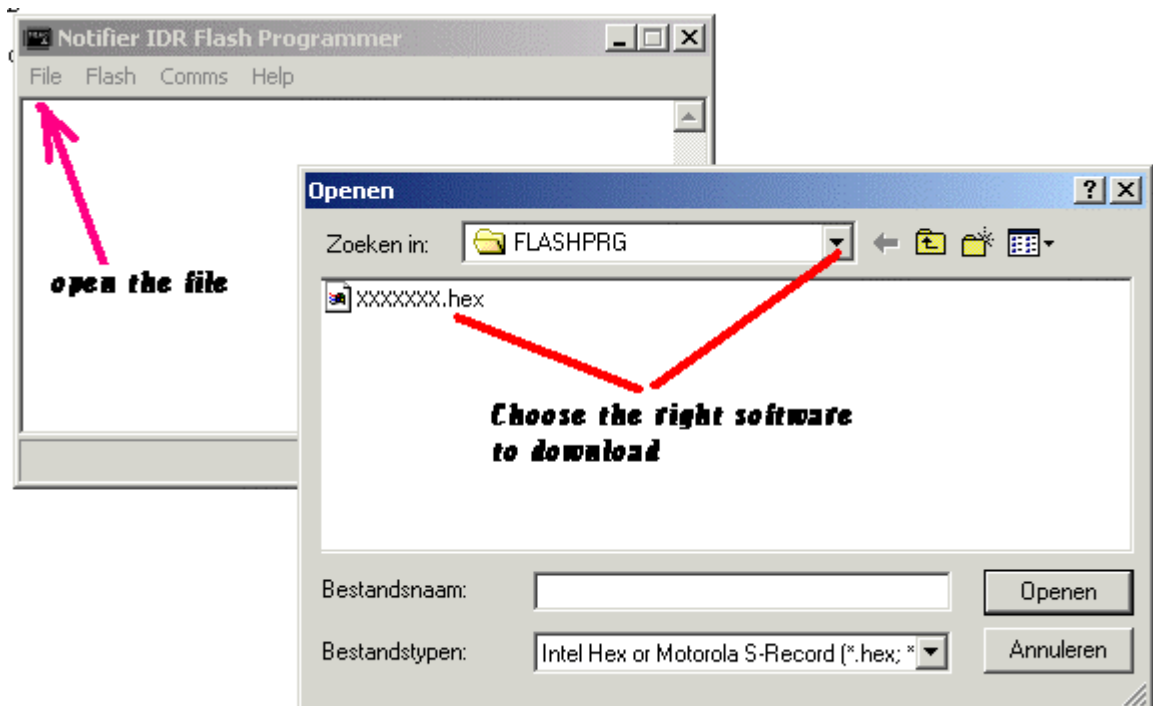
To start the program tool, double-click on the file Flashprogram.exe.

The following screen will open

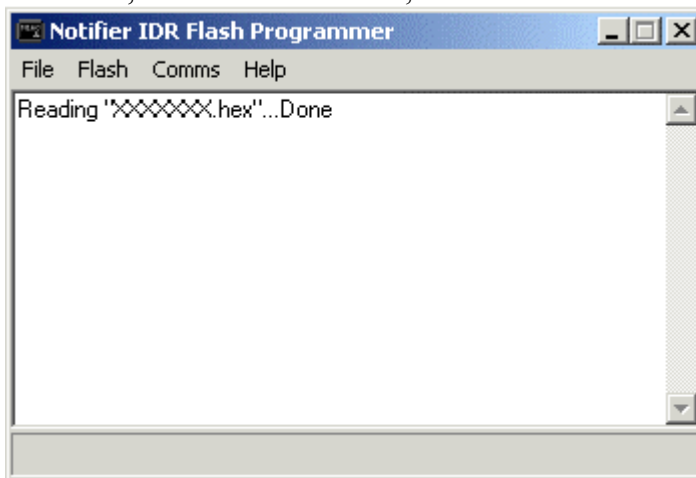


The next thing to do, is to select the software you want to download into your panel.

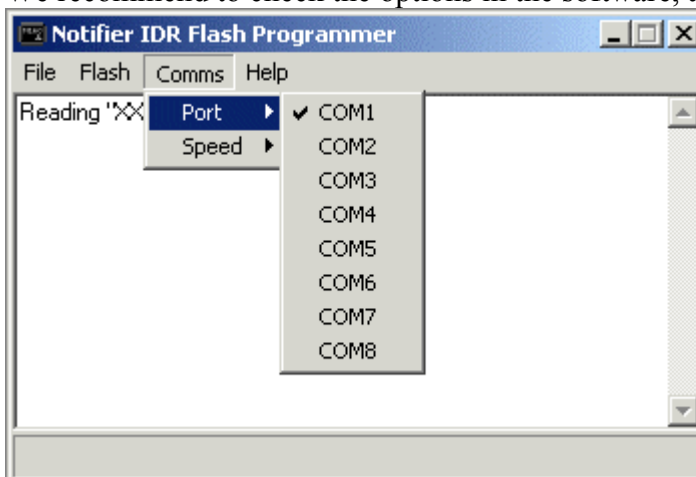
This can be done by clicking on the FILE button and selecting the right file. This should be a HEX-file.



The program will now open this HEX-file and load it into it's memory.  
After this, The screen indicates;

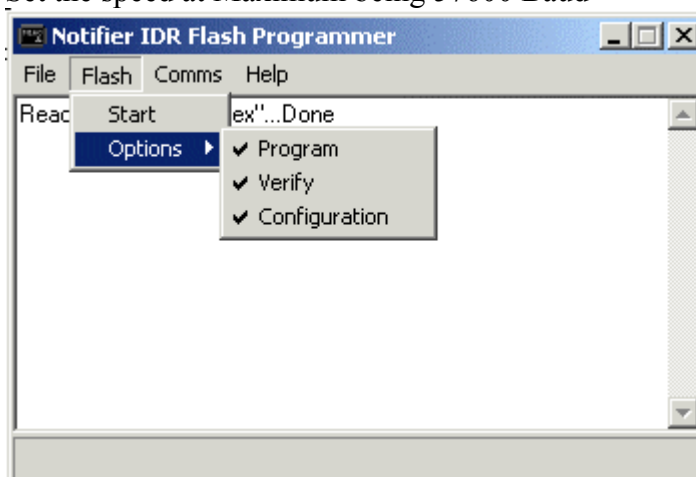


We recommend to check the options in the software, and set them as follows;



Mostly, you'll use COM1

Set the speed at Maximum being 57600 Baud



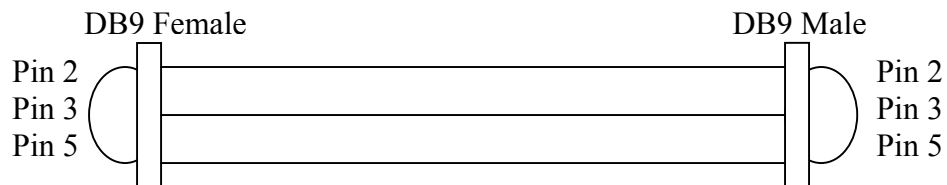
Set the program to execute all steps being Program, Verification and Configuration

After this, you check your RS232 connection and set the panel as indicated in the chapter SETUP IDR REPEATER BEFORE DOWNLOAD

➤ **RS232 CONNECTION**

To connect your Pc to your IDR-repeater, use your normal upload download cable, normally used to program 2000 or 3000 panels

This cable has got the following characteristics;



➤ **SETUP IDR REPEATER BEFORE DOWNLOAD**

Before you can download software towards your panel, you will have to prepare this panel to accept the file.

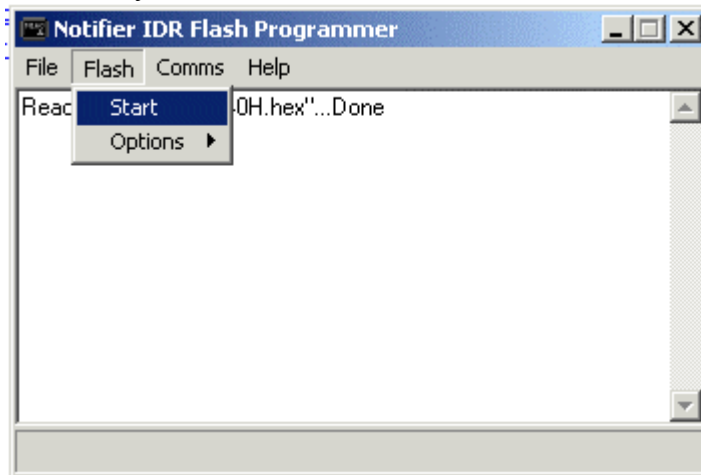
Please follow the next steps;

- Connect your Pc to the repeater by means of the RS232 serial cable described above
- Make sure your panel is powered with 24Vdc.
- Place a jumper on a connector J14, labelled PE. You will find this connector next to the DB9.
- After this, press a little black button labelled RST to reset the processor to be able to accept the information. You will find the button next to the DB9. After you have pressed the button, the display will be blank, and your panel is ready to receive the information.

## ➤ DOWNLOADING

First, follow the instruction above to connect your panel, prepare it to accept information, and set up the Flashprogram.exe tool.

After this you click the START button on the FLASH menu



If everything is OK, the program will proceed as follows



When it indicates the OK sign at the end, the programming is complete.

If anything is wrong, it will indicate it. Sometimes, it will suggest how to solve the problem. We suggest to close down all programs and repeat all steps described above.

## ➤ REPEATER MANIPULATIONS AFTER DOWNLOAD

After the download has been completed, you should follow the next steps

- Remove the RS232 connection between PC and the IDR repeater
- Remove the jumper from J14 labelled PE
- Press the little black button labelled RST where after the repeater will restart

---

### SETTING CONTRAST

It is possible that your texts on the display are unclear after restart. This is because the contrast is too low. You can change this during the LAMPTEST function.

**This function is only available if you turn the key to the right on an active repeater, or place a jumper on the connector J18 labelled KS when you are working on a passive one.**

Next, press the STAR button and select with the UP( ↑ ) and DOWN( ↓ ) arrows the LAMPTEST option. Activate the option by pressing the STAR button again. You can change the contrast with the up-arrow ( ↑ )

During LAMPTEST, the new software version is showed in the display.

### SELECTING LANGUAGE

The panels will start in German, or they will ask you to select the language upon start up. To change the language, press the STAR button and select by means of the UP( ↑ ) and DOWN( ↓ ) arrows the option EINSTELLUNGEN.

**This function is only available if you turn the key to the right on an active repeater, or place a jumper on the connector J18 labelled KS when you are working on a passive one.**

Select the option with the STAR button. After this you can select the language with the UP( ↑ ) and DOWN( ↓ ) arrows.

**ALWAYS REMOVE THE JUMPER ON J18 LABELLED KS AFTER COMPLETION OF THE PROGRAMMING**