

*Milesight*

# NEW PRODUCTS

Radar-Video Fusion  
TrueColor  
4G Solar-powered  
Dual-sensor Panoramic  
From PRO to PROer



# Milesight Q Series

See in TrueColor<sup>AI</sup>, Stay On-Guard



## Key Highlights of Milesight Q Series

TrueColor Image	Built-in Deterrence	Smarter AI	Easy Deployment
<ul style="list-style-type: none"> <li>• 4/5/8MP</li> <li>• Smart Hybrid Light</li> <li>• F1.0 Large Aperture &amp; 1/1.8" Big Sensor</li> <li>• AI ISP</li> <li>• Super Day-Night Focus Lens</li> <li>• Precision AA Process</li> </ul>	<ul style="list-style-type: none"> <li>• AI-triggered Audio-Visual Alarms</li> <li>• Red &amp; Blue Flashing Lights</li> <li>• Built-in Speaker &amp; Dual Mic</li> <li>• Real-time Alarms to Deter Intrusions</li> </ul>	<ul style="list-style-type: none"> <li>• VCA 2.0 with Ultra-low False Alarm Rate</li> <li>• Up to 75m AI Detection Distance</li> <li>• MSense: Face Capture &amp; Object Counting &amp; Heat Map</li> </ul>	<ul style="list-style-type: none"> <li>• One-screwdriver Installation</li> <li>• ONVIF &amp; Third-party Platform Ready</li> <li>• Sustainable Eco-friendly Packaging</li> <li>• IP67 &amp; IK10</li> </ul>

## How It Works?

### Smart Hybrid Light



### 01 IR Mode Activated

Infrared lights turn on in a quiet environment, delivering clear images for round-the-clock monitoring.



### 02 Event Detected - Switch to Full-Color

Camera automatically switches full-color lighting upon detecting an event, revealing more details with vivid clarity.



### 03 Active Deterrence Triggered

Built-in strobe lights and speaker activate instantly to warn the intruder.

\*Red & blue lights support default-off.



### 04 Return to IR Mode

Once the event has passed, the system switches back to IR mode, ensuring efficient and non-intrusive surveillance.



# DualVision TrafficX Radar Camera

Advanced Radar-Video Fusion With Up to 320km/h Speed Detection

320km/h	Speed Detection & ANPR
24GHz	Radar
99%	Capture Rate
98%	ANPR Accuracy



Speed: 226km/h  
Vehicle Type: Car  
Vehicle Color: White  
Plate: MS1234C  
Plate Color: White  
**MS 1234C**



TS5510-GVH

## ▶▶ Cutting-edge Radar Performance



Radar-Video Fusion + ANPR



Up to **320km/h**  
Speed Detection



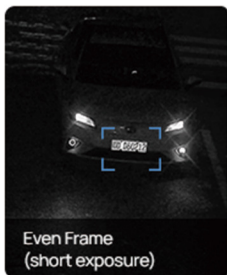
**2~3 Lanes** Coverage  
(Recognition ≥95% individually)



Up to **32** Tracking  
Targets

## ▶▶ Ultra-clear Imaging

Frame Parity Flashing

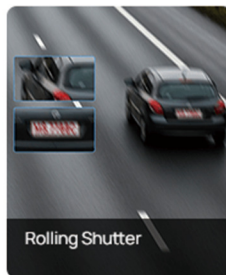


Even Frame  
(short exposure)



Odd Frame  
(long exposure)

Global Shutter



Rolling Shutter



Global Shutter

740nm/850nm Wavelength



850nm IR Wavelength



740nm IR Wavelength



### High Compatibility

- CGI/APIs and TCP/HTTP/MQTT for Easy Integration



### Violation Management

- Reverse Driving Detection, No-plate Detection, Vehicle Attributes Event Detection, Overspeed Violation, etc



### Easy Network Connection

- Built-in 4G Module (Optional)



### Black/White List

- Up to 20000 Records inside the Camera



### Edge AI ANPR

- Support Recognition of Various Plate Attributes (number and color) & Vehicle Attributes (Type, Color, and Brand)
- Up to 50 Meters ANPR Range



### High Protection Level

- IP67 for Weather-resistant Performance



### Large Storage

- Support SD Card Local Storage up to 1TB



# 4G Solar-powered Kit

Eco-friendly Security for Off-grid & Remote Area



AI



4G



Solar-Powered



1TB Storage



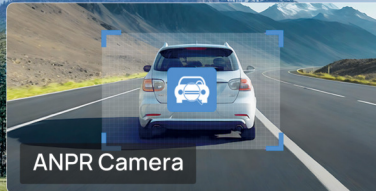
IP67



Modular  
Battery



ONVIF  
G/M/S/T



## Key Features



**1 Kit**

All-in-one Kit for  
Remote Security



**2 Watts**

Ultra-low Power  
Consumption



**9 Days**

9 Days of Continuous  
Recording



**1 SiteGuard Suite**

Dedicated System with VMS,  
App and Cloud

## Product Highlights



4G Solar-powered **Security** Camera

- 2.8mm/6mm Lens
- Perimeter Protection & Proactive Defense
- Illegal Dumping Detection
- Vehicle Classification



4G Solar-powered **ANPR** Camera

- 16mm Lens
- Comprehensive License Plate & Vehicle Type Recognition
- Efficient List Management & List Event
- No-plate Event

## Application Scenarios



Perimeter Protection



Illegal Dumping Detection



Traffic Surveillance



# 4G Solar-powered Traffic Sensing Camera

Your Real-time Evidence Capture Partner

4G

Solar-Powered

Vehicle Capture

Radar

4G

Solar-power

Vehicle  
Capture

Radar Trigger

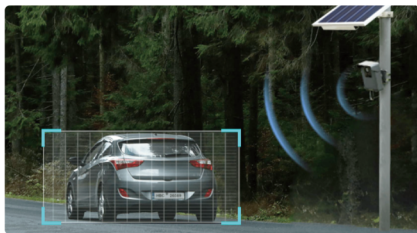


Three-Axis Ball Bracket



## Product Highlights

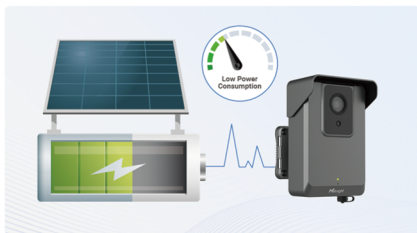
Precise Real-time Capture with Radar & AI



Low-power Mode Ensures Low Consumption & High Efficiency



Solar-powered for Sustainable Use



4G LTE Wireless and Effortless Data Transmission



## Application Scenarios



Traffic Flow Collection for Further Insights



Entry&Exit Time Capture for Parking Lots



Illegal Parking Capture

# Milesight AI TrueColor Dual-sensor 180° Panoramic Camera



# 180°



## See Colors

- 24/7 TrueColor Image
- Smart Hybrid Light
- F1.0 Aperture & 1/1.8" Sensor & 0.0005Lux
- Super Focus Lens in Day & Night
- Industry-leading Precision AA Process



## See Smarter

- MSense: People Counting + Vehicle Counting + Heat Map
- 8\*VCA 2.0: Up to 70m Detection Range with Ultra-low False Alarms



## See Wider

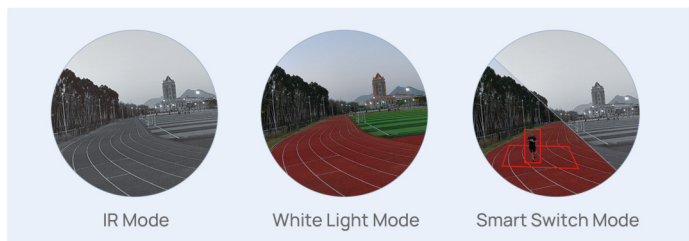
- Wider Coverage with 180° Horizontal, 58° Vertical
- Dynamic FusionXpert, Seamless Panorama Stitched
- ePTZ Zooms in, Capturing Every Detail



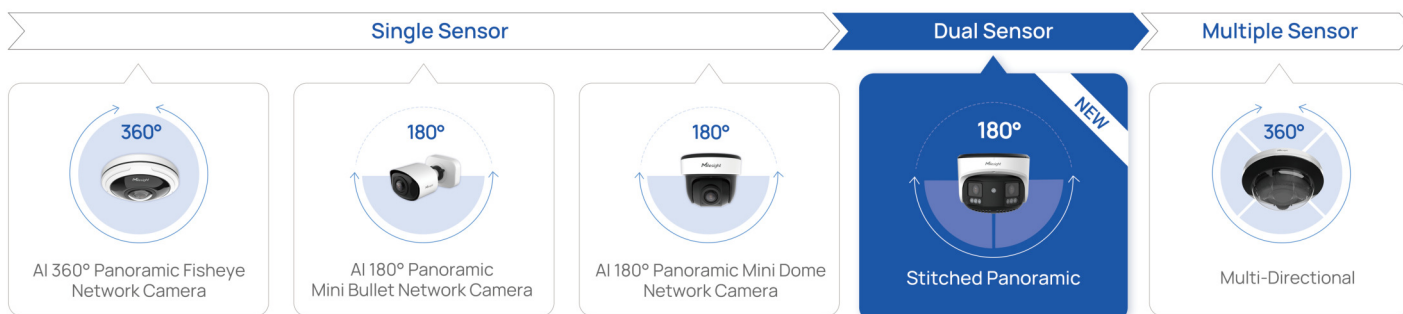
## See Safer

- TPM 2.0 & NDA A Compliance
- Built-in Strobe Light for Proactive Deterrence
- IP67 & IK10-rated Industrial Design

## ▶▶ Smart Hybrid Light



## ▶▶ Milesight Panoramic Camera Series





# From PRO to PROer

Pro Series Reborn, Built for Project-Grade Security.



# PROer

## ►► New AI

### VCA 2.0

High AI Accuracy

☒ Multiple Targets ☒ Small Targets ☒ Vehicle Types



Leaf



Dog



Cat



Light



Rain



Mosquito



More

### Attribute Extraction

Human:



Hat/No Hat



Top Color



Bottom Color

Vehicle Type:



Bicycle



Car



Motorcycle



Bus



Truck



E-scooter

### Behavior Detection **NEW**



Sound Classification



Hard Hat



Violence

\*Coming Soon

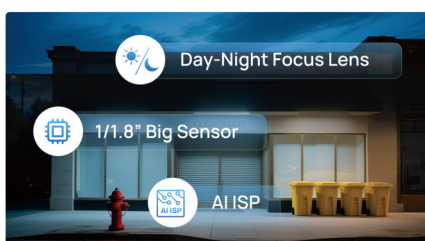


Fall

\*Coming Soon



## ►► New in Imaging

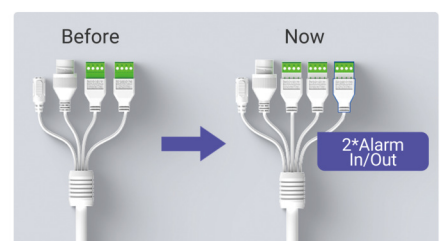


Better Night Vision

## ►► New in Usability



Quad Stream Support



Dual Alarm I/O

■ Make Sensing Matter ■

V2.5



**Milesight** | [www.milesight.com](http://www.milesight.com)

Tel: +86-592-5922772(8801) - Sales +86-592-5922772(8701) - Support

Mail: [sales@milesight.com](mailto:sales@milesight.com) [support@milesight.com](mailto:support@milesight.com)

Address: Building C09, Software Park Phase III, Xiamen 361024, Fujian, China



[www.milesight.com](http://www.milesight.com)