

■ Make Sensing Matter ■

V10.3



Milesight | www.milesight.com

Tel: +86-592-5922772(8801) - Sales +86-592-5922772(8701) - Support

Mail: sales@milesight.com support@milesight.com

Address: Building C09, Software Park Phase III, Xiamen 361024, Fujian, China



www.milesight.com



Milesight

CONTENTS

About Us	01	Intelligent Traffic Series	29
		TrafficX Series	29
		TrafficC Series	31
		Parking Management	33
Why Milesight	02	OpenVision Series	35
Quality & Reliability	03	OpenVision Series	35
Superior Image Quality	05		
User-Centric Design	07		
Milesight AI Algorithms	09		
Milesight PlateXpert Technology	11		
Video Surveillance Series	13	NVR	39
4G Solar-powered Series	13	NVR Series	39
Q Series	17	PoE NVR Series	40
AI Mini Series	19	Enterprise NVR Series	41
AI Pro Series	21		
AI PTZ Series	23	PoE Switch	42
AI Panoramic Series	25		
AI 5G Series	27	Software	43
		Accessories	44



About Us

Milesight offers multi-potential sensing products to capture the most meaningful data and makes it accessible across diverse applications. It innovatively applies emerging technologies such as AI, 5G, and IoT to distinct use scenarios. With a commitment to making sensing matter, Milesight quickly responds to customer-specific challenges and collaborates with an expanding network of partners to deliver unique data value. It is determined to make real, positive impacts in smart buildings, intelligent traffic, intelligent security, smart cities, and beyond.



600+
Employees



2000+
Distributors and
System Integrator
Partners



120+
Serves to
120+ Countries
and Regions



2
Focus on 2 Product
Lineups: Smart IoT
and Video Surveillance

Unique Aesthetic Product Design

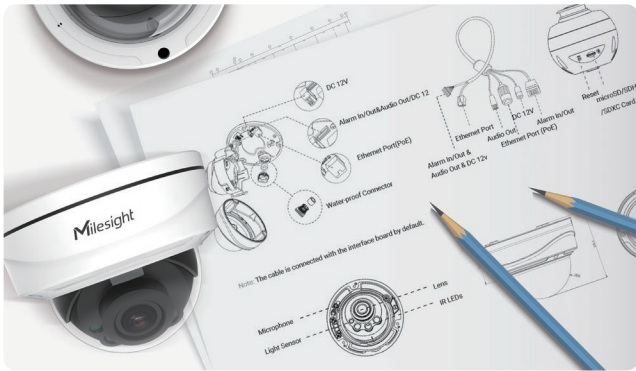


Distinctive Exterior Design

The sleek and elegant design distinguishes Milesight Cameras.

Design Language

Milesight cameras' streamlined design form and smooth lines not only enhance its aesthetic appeal but also provide a distinct visual difference that catches the eye.



Award-winning Design

The Highest-Quality Authenticated:
Milesight Indoor Parking Guidance Camera
Wins IF Design Award.



Quality & Reliability



Attention
to Detail



Premium
Texture



Hardware and
Protective Design



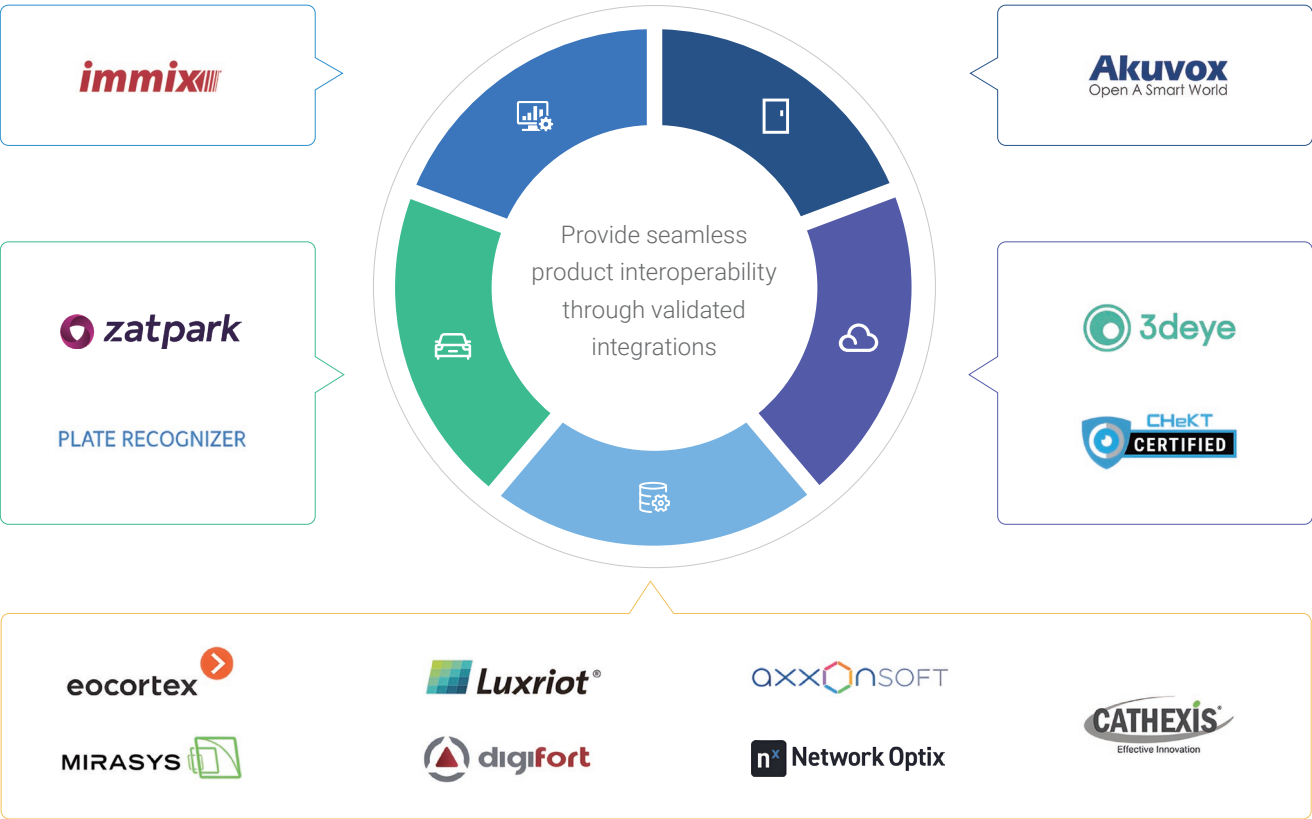
Certification

We are certificated with CE, FCC, UL, Verizon, etc., meeting the daunting and demanding requirements of global security industry.



Ecosystem Management

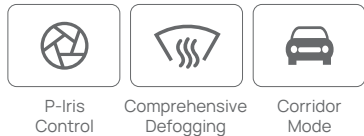
Open Platform & Third-party Algorithm Integration



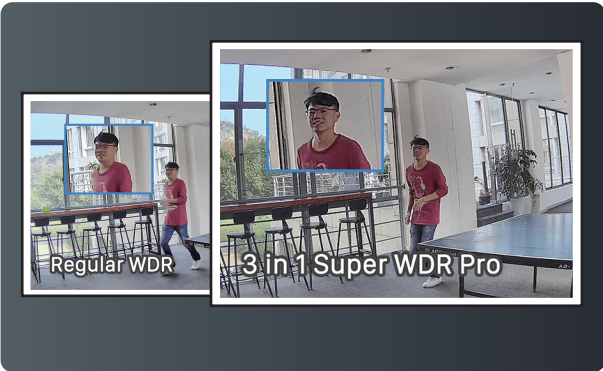
Superior Image Quality

Milesight cameras deliver outstanding performance with advanced features for professional surveillance. They ensure vivid image quality with 140dB WDR, HLC, and BLC, while offering optical zoom from 3X to 42X for detailed capture.

Supporting high frame rates up to 100fps and low-light performance with 0.001Lux sensitivity and Smart IR II Technology, they excel in both day and night environments. With wide-angle viewing (180°/360° panorama) and high resolutions up to 12MP, Milesight cameras provide clear, smooth, and expansive coverage.



Vivid Image in Backlight



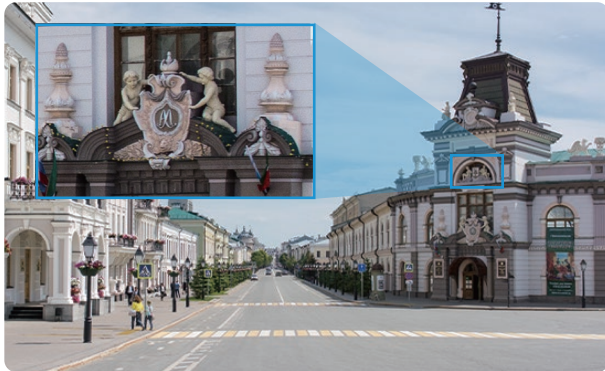
- 140dB WDR
- HLC (Highlight Compensation)
- BLC (Backlight Compensation)

Low Light Performance



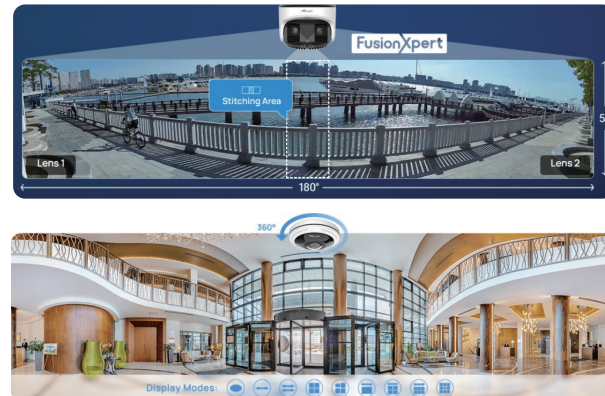
- 0.001Lux Ultra Low-light
- Smart IR II Technology

Optical Zoom



- 4X/12X/20X
- 23X/30X/36X/42X

Wide Angle Viewing



- 180°/360° Panorama
- Multi-directional Coverage

High Frame Rate



- 60fps/90fps/100fps

High Resolution



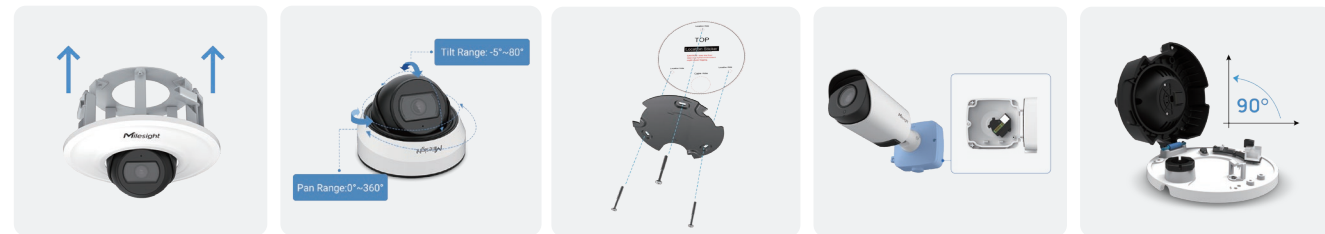
- 2MP/5MP/6MP/4K/12MP

User-Centric Design

Succinct Structure



Product Structure Features



Recessed Installation

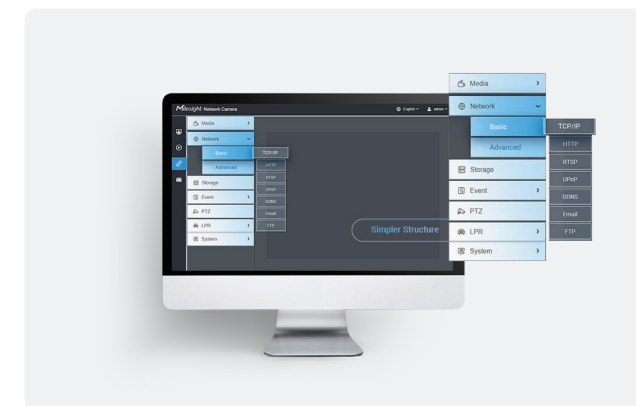
3-Axis Design

Panel Bracket

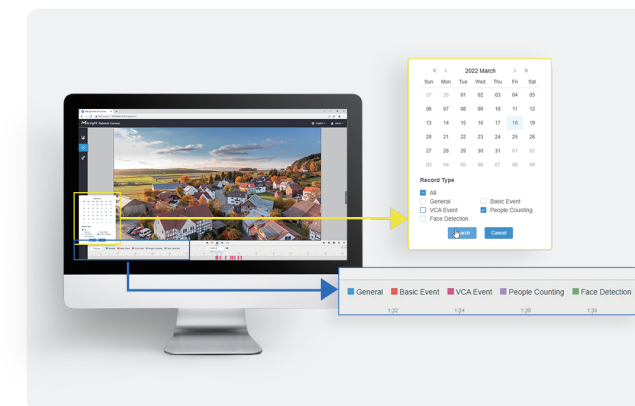
Integrated Junction Box

Clamshell Design

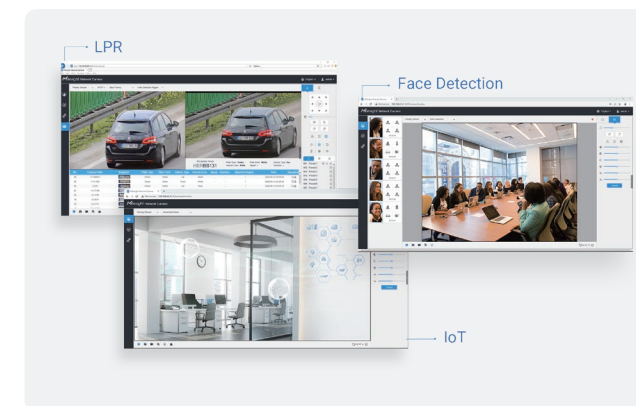
User-friendly UI Design



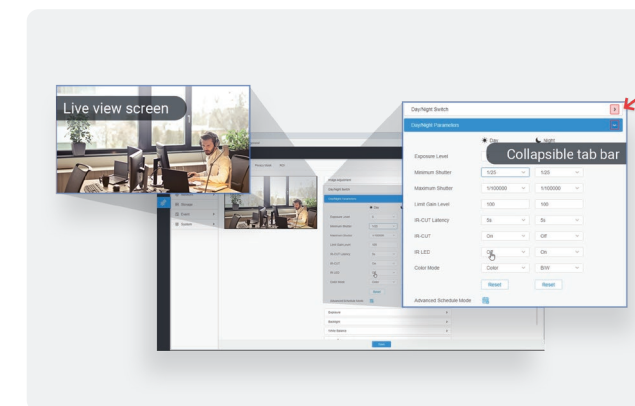
Simple Structure for Smooth Video Surveillance



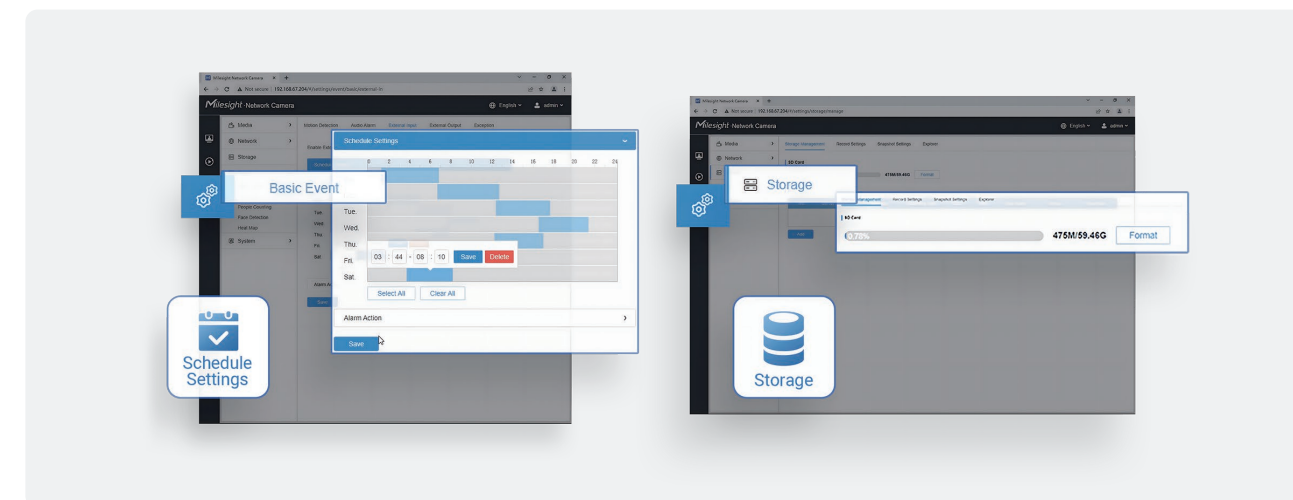
Quick Playback to Focus More on What Matters Most



Professional Mode Interface for Specific Applications



Easy Configuration for Efficient Operations



Better Visualized & Interactive Designs

Milesight AI Analytics

AI at the Edge, Intelligence in Every Frame



What Powers Milesight AI



VCA 2.0

Built for Security Accuracy



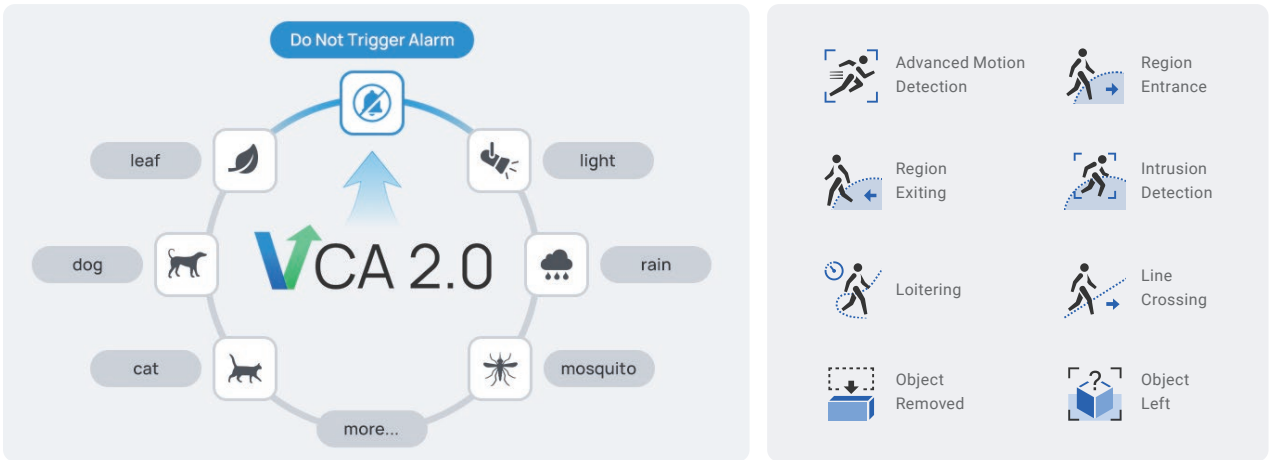
MSense

Built for Vertical Intelligence

VCA 2.0

Upgraded Video Content Analysis Algorithm, Built for Essential Security Tasks

- 8 built-in AI VCA features for instant threat detection
- Accurate recognition of small and multiple targets
- Up to 75m AI detection range (Fix-lens)
- Super Low False Alarm Rate



MSense

Unlocks Deeper Insights for Industry-specific Needs

- A wide range of advanced, self-developed algorithms
- Purpose-built for diverse vertical applications
- Delivers actionable insights based on behaviors, counts, and attributes
- Generates metadata to support smart search, reporting, and alert linkage





Milesight PlateXpert Technology

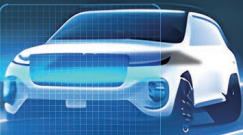
Precision Redefined Beyond ANPR

PlateXpert

PlateXpert

Vehicle Type: Car
Vehicle Color: White
Plate: MS1234C
Plate Color: White

MS 1234C



≥99% Capture Rate



≥98% ANPR Accuracy



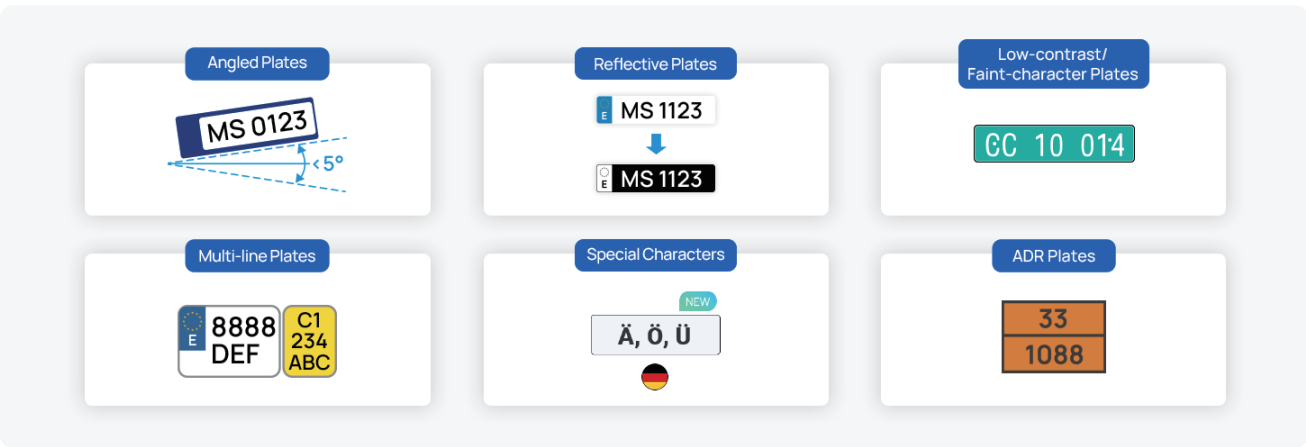
50+ Countries Supported



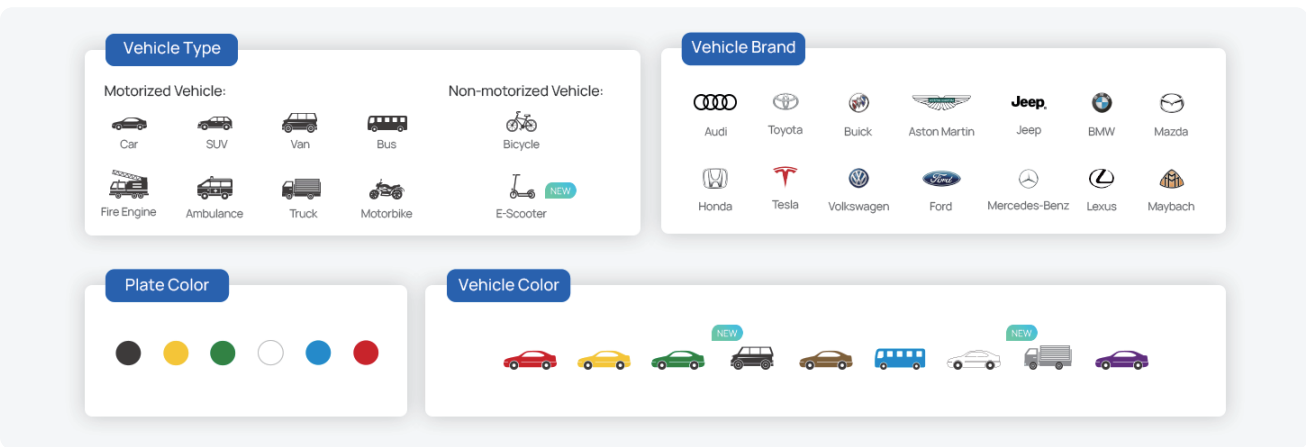
0.1 Second Recognition Time



Recognize License Plates of Every Kind



Rich Plate Attributes & Vehicle Attributes



Core Technologies for Precise Recognition

Frame Parity Flashing



Even Frame (short exposure)



Odd Frame (long exposure)

Global Shutter



Rolling Shutter



Global Shutter

740nm/850nm Wavelength



850nm IR Wavelength

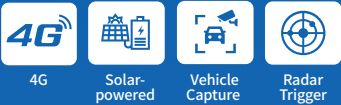


740nm IR Wavelength

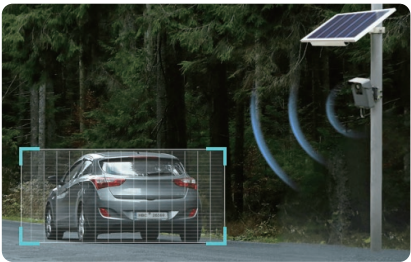
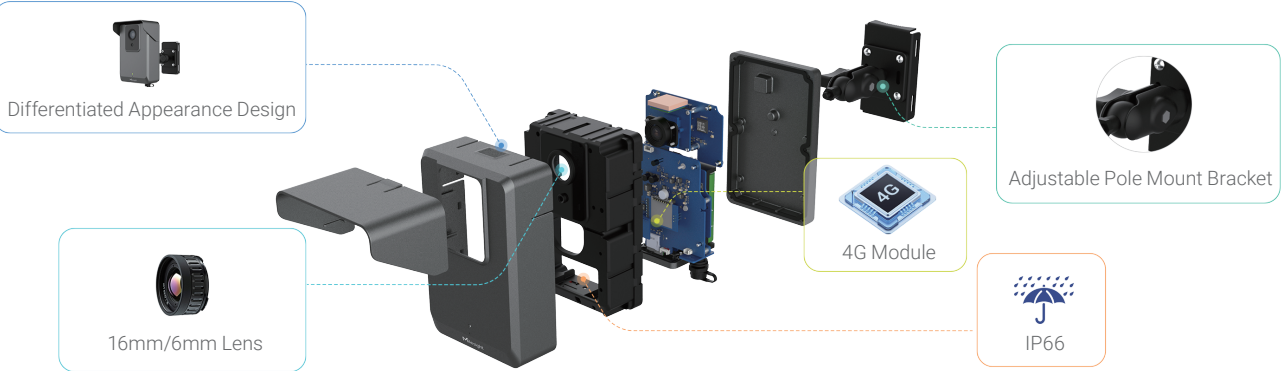


4G Solar-powered Series

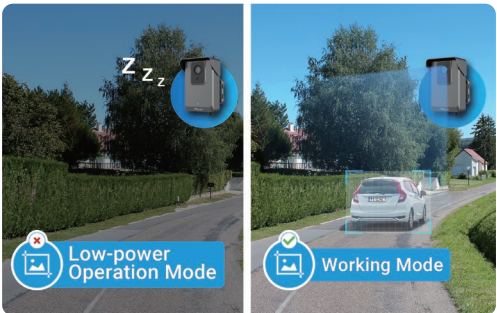
4G Solar-powered Traffic Sensing Camera



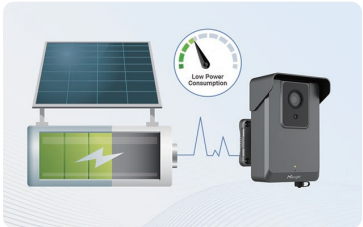
Unique Structure Design



Real-time Vehicle Capture by Radar & AI



Low-power Mode for Energy Efficiency



Solar-powered for Constant Use



4G LTE for Wireless Data Transmission

Key Features

- 4G LTE for Wireless Data Transmission
- Solar-powered for Constant Use
- Battery & Type-C Charging
- Radar Trigger Vehicle Capture
- AI Algorithm for Precise Snapshot
- Low Consumption Technology
- Quick Configuration via WiFi Connectivity
- Built-in High-accuracy GPS Module
- High Compatibility with MQTT & HTTP
- IP66

Application Scenarios



Traffic Flow Collection for Further Insights



Entry & Exit Time Capture for Parking Lots



Illegal Parking Capture

4G Solar-powered Series

4G Solar-powered Camera Kit



4G Solar-powered Security Camera

- Specialized 2.8mm/6mm Lens
- Identification for Human & Vehicle (Bicycle/Car/Motorcycle/Bus/Truck)
- Intrusion Detection / Line Crossing / Object Left / Advanced Motion Detection



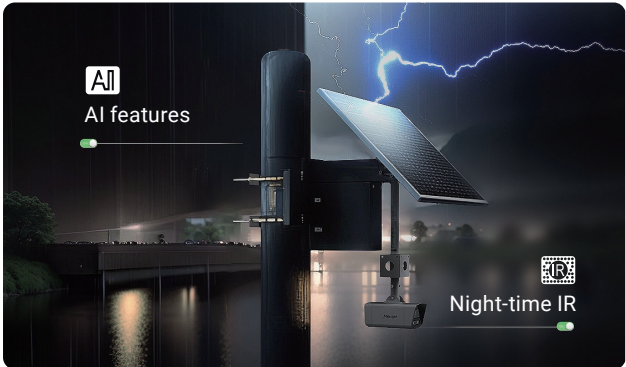
4G Solar-powered ANPR Camera

- Specialized 6mm/16mm Lens
- 850nm/740nm IR Wave Length
- Identification for Vehicle Type (Bicycle/Car/Motorcycle/Bus/Truck)
- License Plate Recognition
- List Management/List Event
- No-plate Event

Key Features



4G + Solar-powered for Remote Surveillance



9 Days of Battery Life, Unmatched 24/7



Go Green with Ultra-low Power Consumption

Working Mode	Recording	AI Detection	Data Transmission
Performance	Continuous	On (Full Frame Rate)	On/Off
Eco	Continuous	On (Dynamic Frame Rate)	On/Off
Sleep	Scheduled Image Capture	Off	Off

Flexible Working Mode for Your Choice
*Eco mode is not available for ANPR camera.

- Up to 6*90Wh Battery & 2*90W Solar Panel
- Edge-AI LPR Algorithm
- 4G Connectivity
- Built-in High-Accuracy GPS Module

- 4MP/0.005Lux/120dB Super WDR
- 20m IR Distance
- IP67 & Category 12 Typhoon Guaranteed
- Battery Protection in -20°C to +60°C

Application Scenarios



Construction Sites



Illegal Dumping



Community Safety



Remote Security



Q Series

See in TrueColor, Stay On-Guard

NDAANDAANDAAN

VCA 2.0VCA2.0VCA2.0

MSenseMSenseMSense

TrueColorTrueColorTrueColor

On-GuardOn-GuardOn-Guard



Milesight AI TrueColor
Bullet Network Camera
4/5/8MP



Milesight AI TrueColor
Dome Network Camera
4/5/8MP



Milesight AI TrueColor
Turret Network Camera
4/5/8MP

Key Highlights of Milesight Q Series

TrueColor Image

- 4/5/8MP
- Smart Hybrid Light
- F1.0 Large Aperture & 1/1.8" Big Sensor
- AI ISP
- Super Day-Night Focus Lens

Smarter AI

- VCA 2.0 with Ultra-low False Alarm Rate
- Up to 75m AI Detection Distance
- MSense: Face Capture & Object Counting & Heat Map

Built-in Deterrence

- AI-triggered Audio-Visual Alarms
- Red & Blue Flashing Lights
- Built-in Speaker & Dual Mic
- Real-time Alarms to Deter Intrusions

Easy Deployment

- One-Screwdriver Installation
- ONVIF & Third-party Platform Ready
- Sustainable Eco-friendly Packaging
- IP67 & IK10

How It Works - Smart Hybrid Light

01

IR Mode Activated

Infrared lights turn on in a quiet environment, delivering clear images for round-the-clock monitoring.



02

Event Detected-Switch to Full-Color

Camera automatically switches full-color lighting upon detecting an event, revealing more details.



03

Active Deterrence Triggered

Built-in strobe lights and speaker activate instantly to warn the intruder.

**Red & blue lights support default-off*



04

Return to IR Mode

Once the event has passed, the system switches back to IR mode, ensuring efficient and non-intrusive surveillance.





AI Mini Series

Small in Size, Big on Intelligence



AI IR Mini Dome Camera
2/4/5/8 MP



AI Vandal-proof Mini Dome Camera
2/4/5/8 MP



AI Motorized Dome Camera
2/4/5/8 MP



AI Weather-proof Mini Dome Camera
2/4/5/8 MP



AI Vandal-proof Mini Bullet Camera
2/4/5/8 MP



AI Motorized Mini Bullet Camera
2/5/8 MP



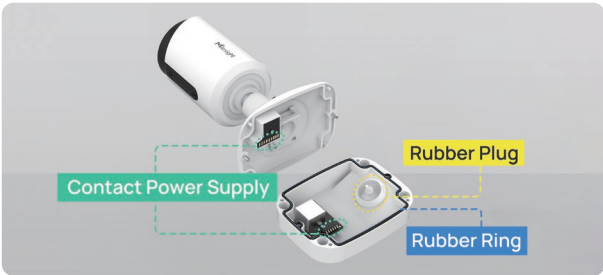
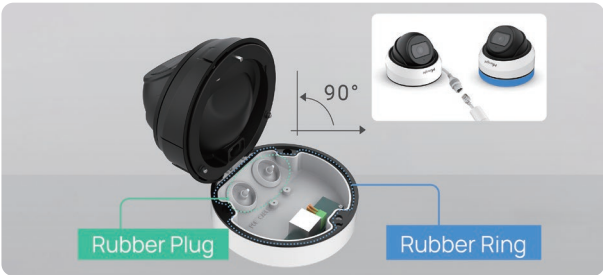
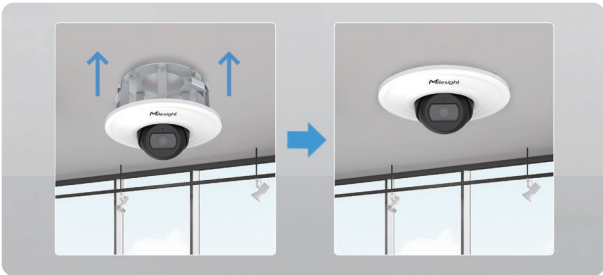
AI Weather-proof Mini Bullet Camera
2/5/8 MP



Key Features

- 2MP@90fps, 4MP@30fps, 5MP@30fps, 4K@30fps
- 4K Sony Starvis Sensor
- Smart IR II with 50m IR Distance
- 140dB Super WDR
- IP67 & IK10
- Fixed Lens & Motorized Zoom Lens
- Multiple Interfaces & Built-in Microphone
- P-Iris
- SIP/VoIP

Unique Structure Design



- Recessed Installation
- Ultra Compact Size
- Clamshell Design
- 3-axis Mechanical
- Point-contact Power Supply
- Better Thermal Design

AI Functions as Standard



Advanced Motion Detection



Region Entrance



Region Exiting



Intrusion Detection



Loitering



Line Crossing



Object Removed



Object Left



AI Pro Series

From PRO to PROer, Built for Project-Grade Security



PROer



AI 4X/12X Pro Bullet Plus Camera
2/4/5/6/8 MP



AI Motorized Pro Bullet Camera
2/5/6/8 MP



AI Pro Box Plus Camera
2/4/5/8 MP



AI Motorized Pro Bullet Plus Camera
2/4/5/6/8 MP



AI Motorized Pro Dome Camera
2/4/5/6/8 MP

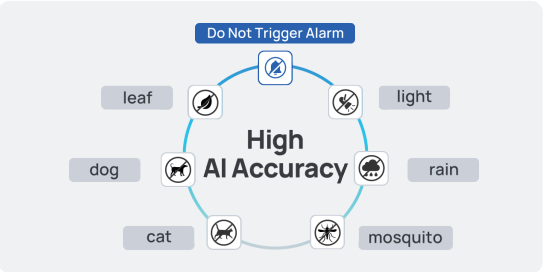


New AI

VCA 2.0



VCA 2.0: Ultra-low False Alarm Rate
Up to 80m AI Detection Distance (Motorized Lens), 170m (AF Lens)



- Multiple Targets
- Vehicle Types
- Small Targets

Attribute Extraction



Behavior Detection



New in Imaging

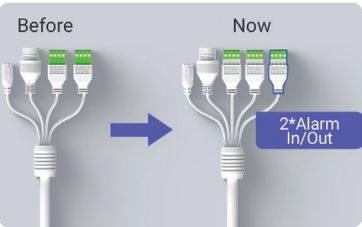


Better Night Vision

New in Usability



Quad Stream Support



Dual Alarm I/O

AI PTZ Series

Intelligent PTZ to Transform Your World



Precise PTZ Tasks

- 12X-42X Optical Zoom
- 360° Endless Pan & 90° Tilt
- Pan Speed up to 350°/s
- Tilt Speed up to 360°/s
- Applied TMR technology
- Structural Precision Less than 0.1°
- 300 Presets & 8 Patrol Paths & 4 Patterns



AI Video Analytics

- 8* Standard VCA Events
- Object Counting
- Regional People Counting
- Face Detection
- Hard Hat Detection
- Smoke & Fire Detection
- Attribute Extraction



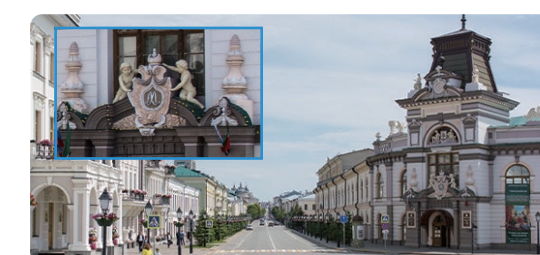
Advanced Functions

- PTZ Auto Tracking
- PTZ Privacy Mask
- Intelligent White LED
- 3D Positioning
- Smart Rain-sensing Wiper



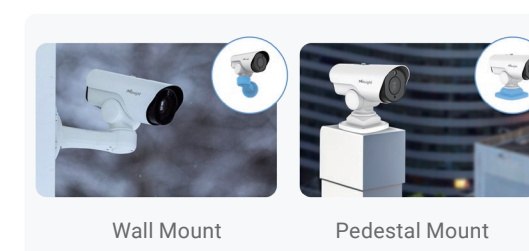
Outstanding Viewing Experience

- 1/1.8" STARVIS Starlight Sensor
- 4K & 100fps
- 0.002Lux Starlight
- 140dB Super WDR
- Smart IR II with 300m IR Distance



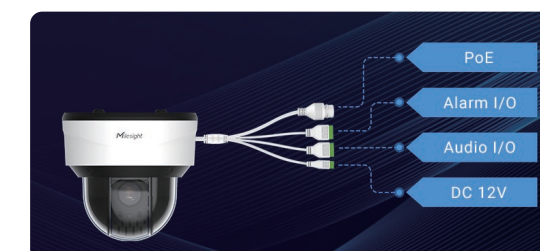
Superior Structure

- Wall Mount / Pedestal Mount
- Recessed Installation



Versatile Interface

- Audio I/O, Alarm I/O, PoE
- AC/DC 12V, RS 485



AI 12X PTZ Bullet Camera
2/5/8MP



AI 12X/20X/23X PTZ Bullet Plus Camera
2/4/5/8 MP



AI 12X/20X/23X PTZ Dome Camera
2/4/5 MP



AI 25X/30X/36X/42X Speed Dome
2/4/5/8 MP



AI Panoramic Series

Boudless World, Truly Within Reach



AI TrueColor Dual-sensor
180° Panoramic
Network Camera



4x5MP
AI Multi-directional
Camera



AI 360°
Panoramic
Fisheye Camera



AI 180°
Panoramic Mini
Bullet Camera

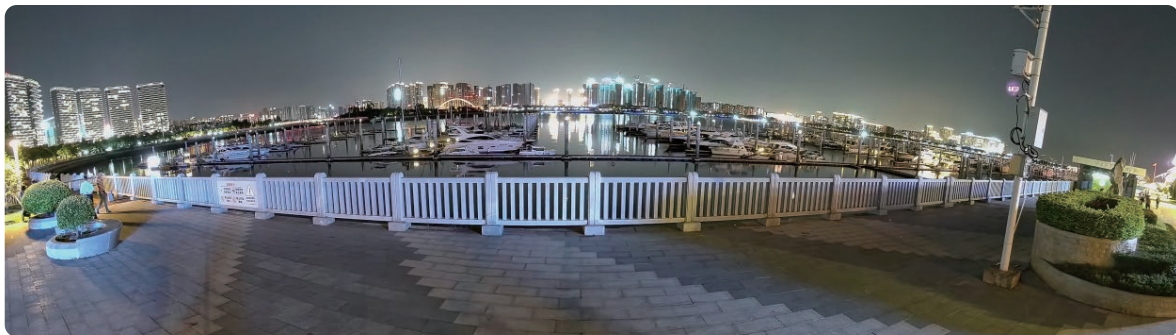


AI 180°
Panoramic Mini
Dome Camera



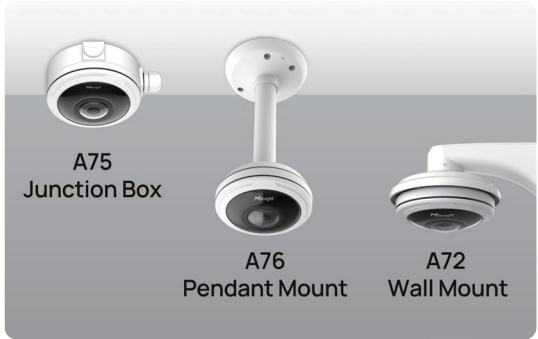
Outstanding Viewing Experience

- 180°/360° Panoramic
- FusionXpert Seamless Stitching
- Up to 12MP
- Superior Image Dewarping
- Onboard/Client-side dewarping
- AI ISP for Outstanding Image Quality
- 1/1.8" STARVIS Starlight Sensor
- 140dB Super WDR



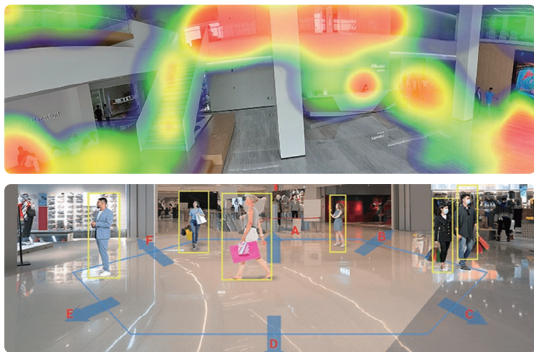
Exquisite Design

- Contact Power Supply Design
- Maximized Installation Flexibility
- Built-in Mic, Alarm I/O, Audio I/O, DC 12V



Intelligent Video Analysis

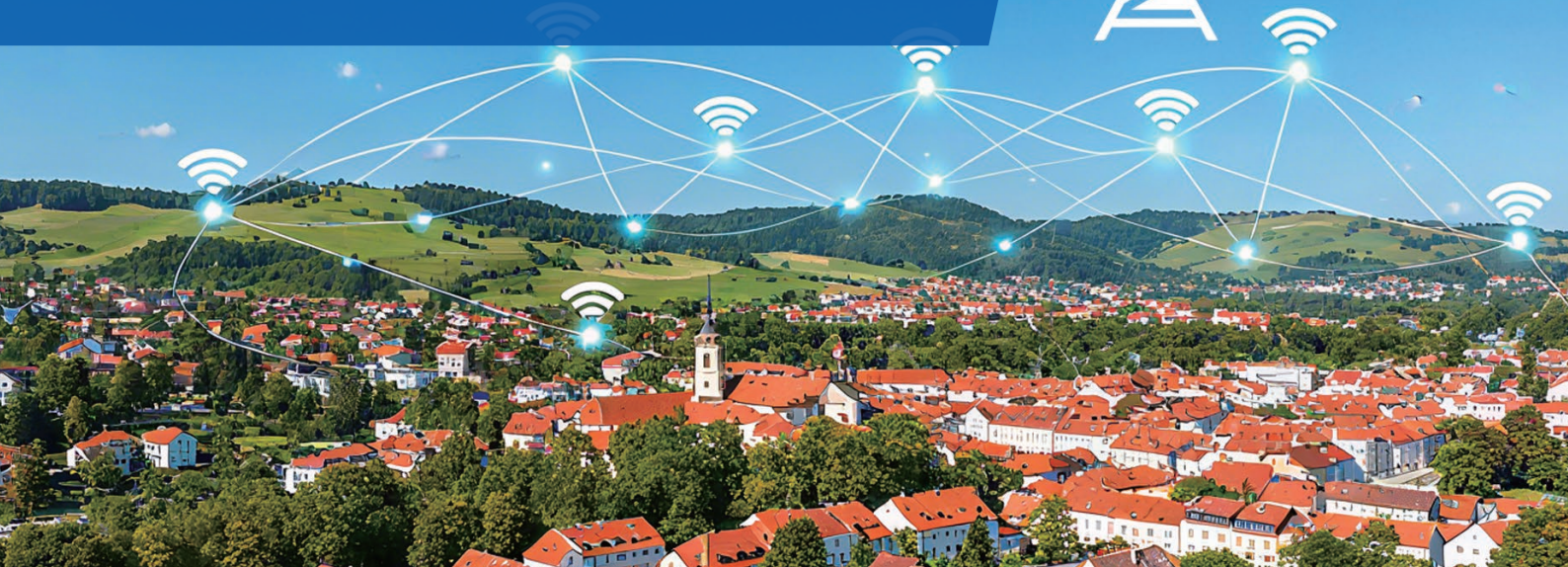
- 8*AI VCA Events
- E-Scooter Detection
- Advanced Heat Map
- People Flow Analysis
- Object Counting





AI 5G Series

Empower the Future of Smart Connectivity



5G AIoT 4X/12X
Pro Bullet Plus Camera
2/8MP



5G AI 4X/12X
Pro Bullet Plus Camera
2/8MP

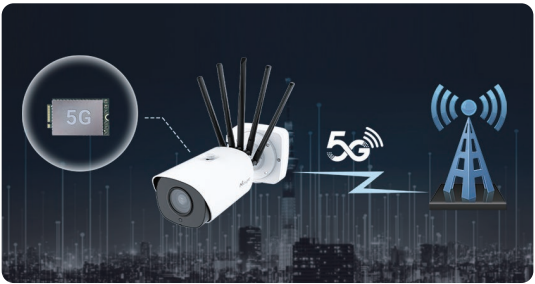


5G AI Motorized
Pro Bullet Plus Camera
2/5/8MP



Industry-leading 5G Technology

- High Bandwidth
- Low Latency
- High Mobility
- Broad Extensibility



Cutting-edge IoT Technology

- Support Standard LoRaWAN® Protocol
- 8 End-devices Simultaneously
- Built-in Network Server
- Support MQTT/HTTP/HTTPS API

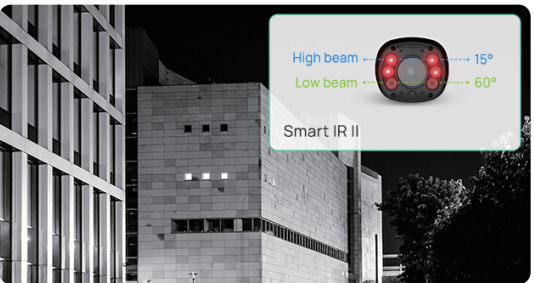


Outstanding Viewing Experience

- 4K Video Viewing Experience
- 1/1.8" Starlight Sensor

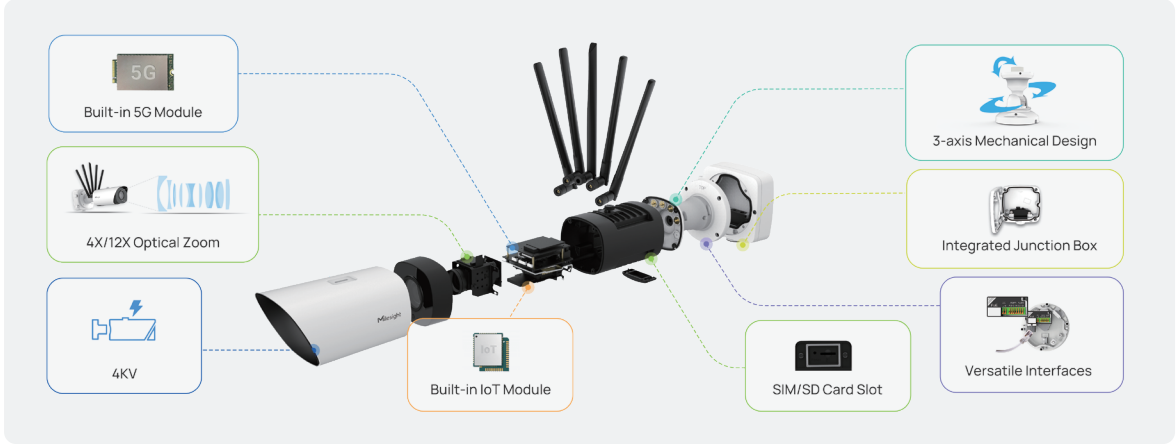


- 140dB Super WDR
- Up to 180m IR Distance



Easy Deployment & Compact Structure

- Built-in 5G Module
- Built-in IoT Module
- 3-axis Mechanical Design
- Integrated Junction Box





TrafficX Series

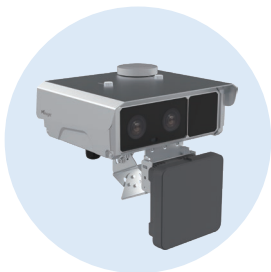
For More Demanding Traffic Applications



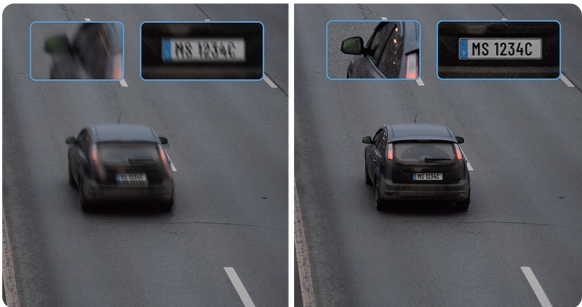
DualVision TrafficX
Camera
TS5510-GH



DualVision TrafficX
Enforcement Camera
TS5511-GH



DualVision TrafficX
Radar Camera
TS5510-GVH



Sharp Capture

- 320km/h ANPR Recognizable Speed
- 99% Capture Rate
- Global Shutter for Fast-moving Capture
- AI ISP for Superior Image



Precise Recognition

- 98% License Plate Recognition Rate
- Frame Parity Flashing for Precise ANPR
- 740nm/850nm Dual IR Wavelength



More Highlights

- Up to 320km/h Speed Detection
- AI-powered Onboard ANPR
- 2*5MP Dual Lenses
- Up to 50m ANPR Distance
- 2-3 Lanes Covering
- 1TB SD Card Storage
- Support GPS/4G Module
- TCP/HTTP/MQTT & CGI/API

Applications



Multi-lane Free Flow (MLFF)



Red Light Violation Detection



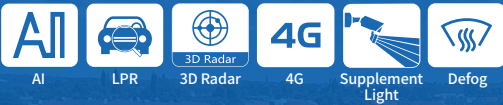
Toll Gate



Low Emission Zone Monitoring


TrafficC Series


For Road Traffic Monitoring & Management




- 


4G Solar-powered ANPR Camera
- 


4G Solar-powered Traffic Sensing Camera
- 


AI Road Traffic Pro Bullet Plus Camera
- 

AI Road Traffic Radar Pro Bullet Plus Camera
- 

AI Road Traffic Supplement Light Pro Bullet Plus Camera
- 

AI Road Traffic PTZ Bullet Plus Camera
- 

AI Road Traffic PTZ Bullet Camera
- 


AI Road Traffic Speed Dome Camera
- 


AI Road Traffic 5G Pro Bullet Plus Camera


AI LPR & Vehicle Attributes Recognition


Vehicle Type


Motorized Vehicle:


 Car


 SUV


 Van

 Bus


 Fire Engine


 Ambulance

 Truck


 Motorbike


Non-motorized Vehicle:


 Bicycle


 E-Scooter


Vehicle Brand


 Audi


 Toyota


 Buick


 Aston Martin


 Mercedes-Benz


 BMW


 Mazda


 Tesla

 Honda

 Volkswagen

 Ford

 Jeep

 Lexus








 Maybach

Plate Color

Vehicle Color











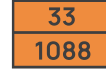
        


Plate Number




ADR License plate



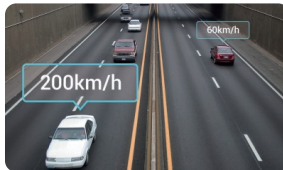
Violation Management



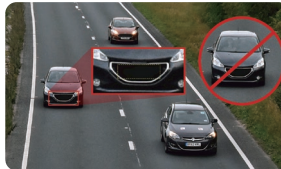
Reverse Driving Detection




Specific Lane Management




Speeding Detection




No-Plate Detection



Red Light Violation Detection




On-street Parking Violation Detection





Traffic Flow Management


More Highlights

- 

2-Lane Coverage
- 

Up to 120km/h Vehicle Speed
- 

3D Radar Technology
- 

Supplement Light for Challenging Lighting
- 

LPR Smart Search
- 

Wiegand Protocol Supported

Parking Management Series

For Smarter & More Efficient Parking



Indoor Parking Guidance Camera

Parking Management Camera

5G Parking Management Camera

Entrance & Exit AI LPR Pro Bullet Plus Camera

Entrance & Exit AI LPR Bullet Camera

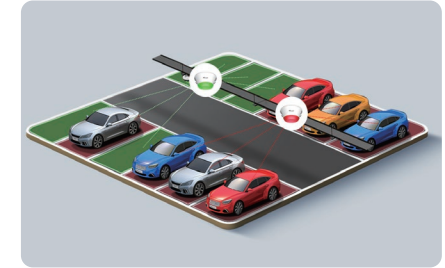
Entrance & Exit Supplement Light AI LPR Pro Bullet Plus Camera

Entrance & Exit AI LPR Pro Dome Camera



Entrance & Exit Management

- AI-powered LPR Algorithm
- Black/White List
- No-plate Vehicle Detection
- Wiegand Interface for Access Control
- Integrated Supplement Light



Indoor Parking Guidance

- Dual Lenses for 6 Spaces
- Customizable Multi-color Indicator
- AI LPR & Vehicle Attributes Recognition



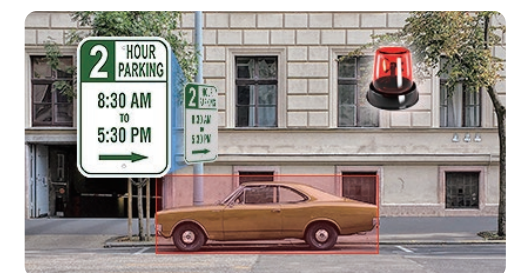
Video Surveillance

- Image Capturing and Video Recording for Vehicle Security Incidents



Outdoor Parking Management

- Occupation Detection (Up to 100 Spaces)
- LPR Parking Detection (6 Spaces & License Plate Recognition)



On-street Parking Management

- Parking Occupancy Detection & Residence Time
- Parking Violation Detection

Milesight OpenVision Camera

VMS on Edge, Secure Distributed Sites Without a Server

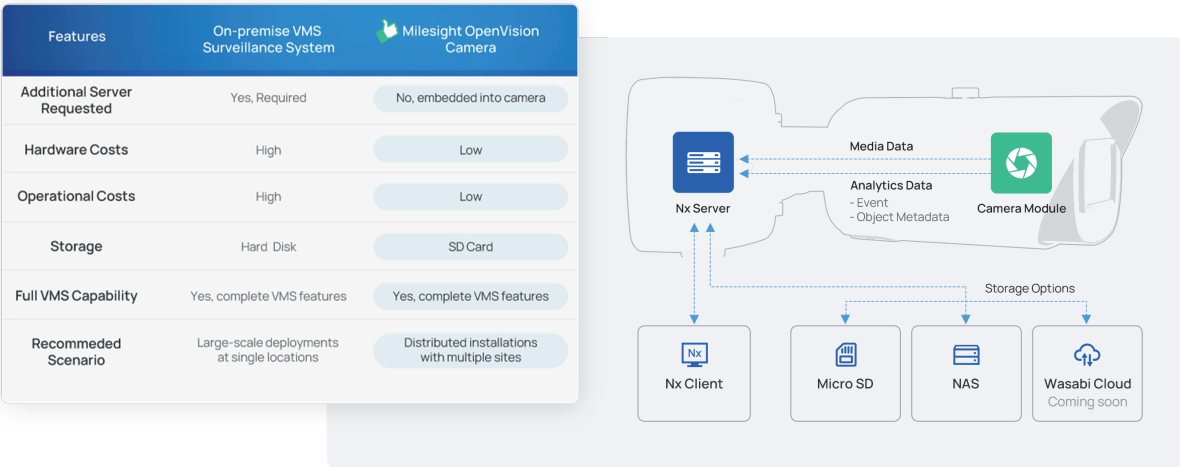


Milesight OpenVision Bullet Camera
5MP

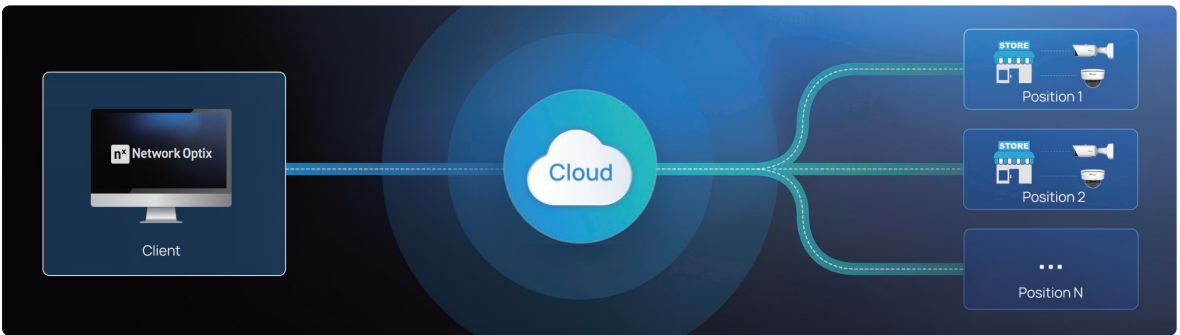


Milesight OpenVision Dome Camera
5MP

Camera as a server, no NVR and additional server needed



Applications



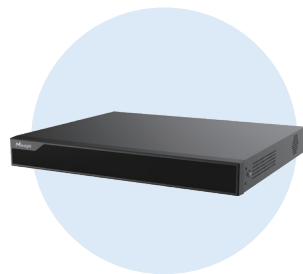
- Built-in Nx Server**
A fully functional Nx Witness server embedded in camera
- 1TB Direct Edge Recording**
Support local recording with 1TB storage capability
- Built-in Milesight Plugin**
Enable advanced AI analytics event and metadata for Milesight cameras
- Secure Data**
Data is more secure without streaming video between camera and server
- Seamless Integration with Nx Cloud**
Connect directly to Nx Cloud, enables direct communication between camera and client
- Future-ready for Going Beyond**
Stay ahead with Nx's latest innovations, including Nx AI Manager and more

Milesight OpenVision Server

Plug & Play with Built-in Nx Server

n^x Network Optix

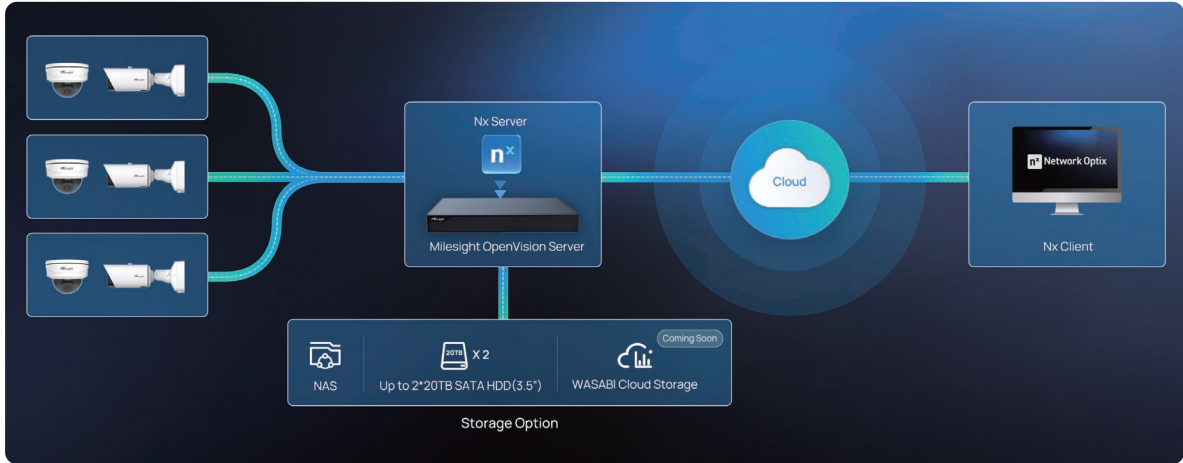
Built-in
Nx VMS



Milesight OpenVision Server
Up to 16CH
Up to 20TB Storage

What is Milesight OpenVision Server

Milesight Openvision Server is a pre-configured, plug-and-play surveillance platform that comes with Nx VMS Server embedded. Designed for fast and hassle-free deployment, it combines powerful hardware and intelligent video management software in one compact system.



Pre-installed VMS for
Instant Setup



Linux-based & Stable
Operation



Empower Camera Analytics on Nx
with Built-in Plugin



Secured Data with N+M Failover &
Backup Storage



Cost-Effective & Streamlined
Deployment



Central Management of
Distributed Security



NVR Series



4K Mini NVR 1000 Series
4/8-CH
10TB Storage

Gold Silver Black

4K Pro NVR 5000 Series
8/16-CH
2*10TB Storage

4K Pro NVR 7000 Series
16/32-CH NVR
4*10TB Storage

4K Pro NVR 8000 Series
32/64-CH
8*10TB Storage

Key Features

- Up to 8*10TB Storage
 - Up to 64-CH Video Input
 - Up to 4K Decoding Performance
 - Multi-screen Output
 - Dual Lan Giga Network Ports
 - ANR/Software RAID/N+1 Hot Spare
 - Storage Quota
- Dual Stream Recording
 - Transcoding
 - POS Integration
 - Online Upgrade
 - Smart People Counting Analytics
 - Intelligent Face Detection Management
 - Versatile Interfaces



PoE NVR Series



4K Mini PoE NVR 1000 Series
4 PoE Plug & Play
4/8-CH
10TB Storage

Gold Silver Black

4K PoE NVR 5000 Series
8/16 PoE Plug & Play
8/16-CH
2*10TB Storage

4K PoE NVR 7000 Series
16/24 PoE Plug & Play
16/32-CH
4*10TB

Key Features

- Up to 24*PoE Plug and Play
 - Up to 4*10TB Storage
 - Up to 48-CH Video Input
 - Up to 4K Decoding Performance
 - Multi-screen Output
 - ANR/Software RAID/N+1 Hot Spare
 - Storage Quota
- Dual Stream Recording
 - Transcoding
 - POS Integration
 - Online Upgrade
 - Smart People Counting Analytics
 - Intelligent Face Detection Management
 - Versatile Interfaces

Enterprise NVR Series



Enterprise NVR 1U Series
8/16CH
Up to 2*20TB



Enterprise NVR 2U Series
16/32CH
Up to 6*20TB



Enterprise NVR 3U Series
64/128CH
Up to 16*20TB

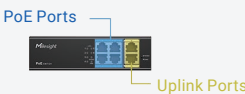
Key Features

- 8/16/32/64/128-CH Models Available
- Pre-loaded with Milesight VMS Enterprise
- Windows System
- Central Management for Single Site & Multiple Sites
- High Scalability
- AI & IoT Capabilities
- Ready-to-go Design for Easy Installation
- N+M Failover

PoE Switch

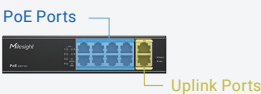


4-Port PoE Switch



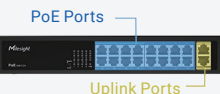
4*10/100Mbps PoE Ports
+2*100Mbps Uplink Ports

8-Port PoE Switch



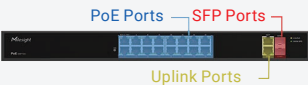
8*100Mbps PoE Ports
+2*100Mbps Uplink Ports
12*100Mbps Uplink Ports

16-Port PoE Switch



16*10/100Mbps PoE Ports
+2*100Mbps Uplink Ports

16-Port SFP PoE Switch



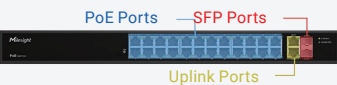
16*100Mbps PoE Ports
+2*100Mbps Uplink Ports
+2*100Mbps SFP Ports

24-Port PoE Switch



24*10/100Mbps PoE Ports
+2*100Mbps Uplink Ports

24-Port SFP PoE Switch



24*100Mbps PoE Ports
+2*100Mbps Uplink Ports
+2*100Mbps SFP Ports

Key Features

- IEEE 802.3af/at Protocol
- 4KV Surge Protection
- Gigabit Uplink Ports
- SFP Uplink Ports
- 250m Extend Mode
- Up to 400W Power Budget

Milesight Backend Software Solution

APP



M-Sight Pro APP

- Simultaneously managing Milesight network cameras and NVRs
- Support Milesight cloud management
- Smooth and high quality live streaming
- Support image capture/video recording functions
- File management
- Efficient split playback
- Transcoding to get better playback performance
- Support scanning QR code to get a remote view via P2P
- Support iOS and Android handheld device
- Support alarm video push notification

TOOLS

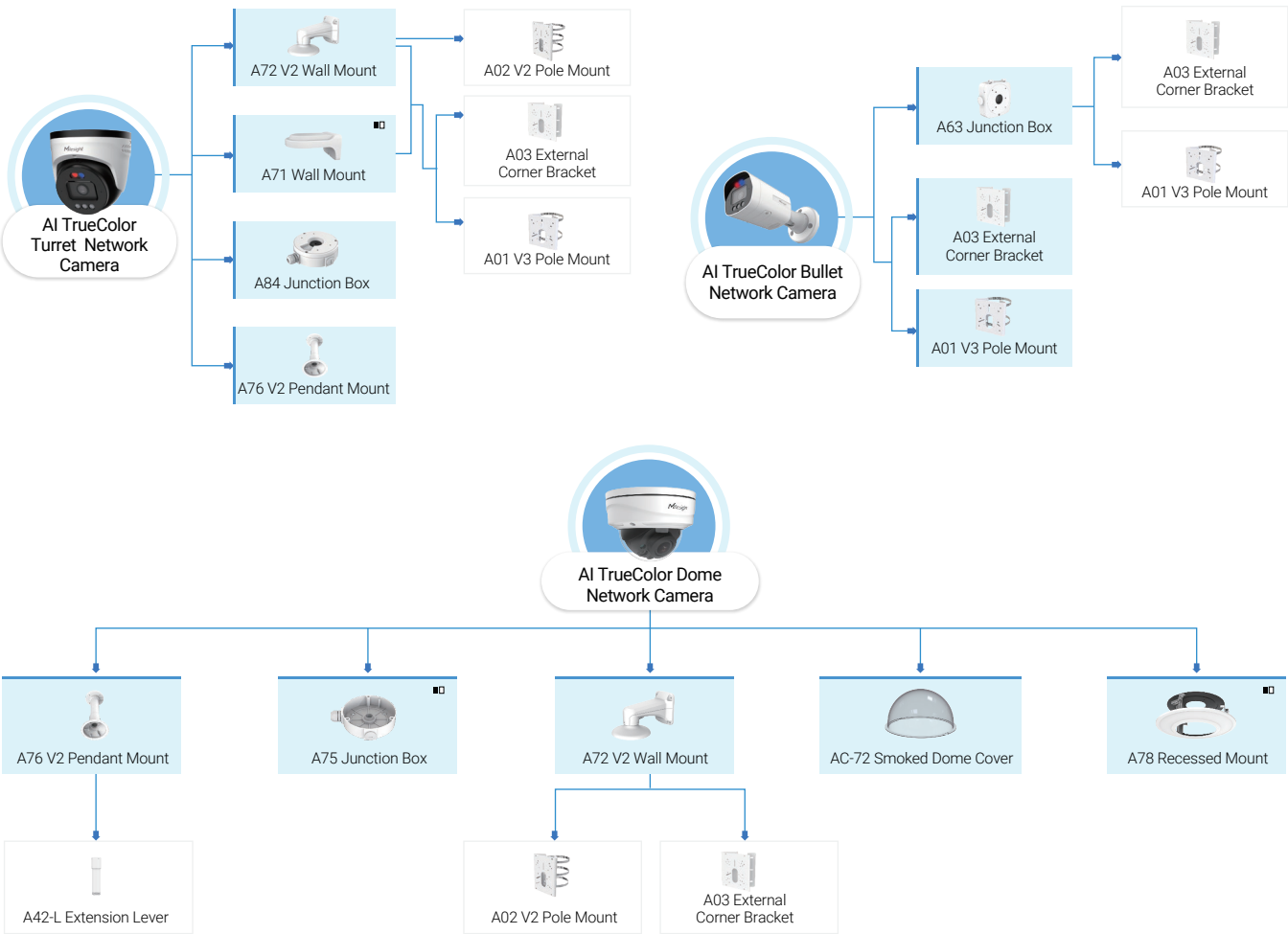


Milesight Smart Tools

- Unified management for network cameras and NVRs
- Batch settings for Milesight devices
- Online batch upgrade for Milesight devices
- Fast, comprehensive, and powerful calculation
- Efficiently calculation report PDF export

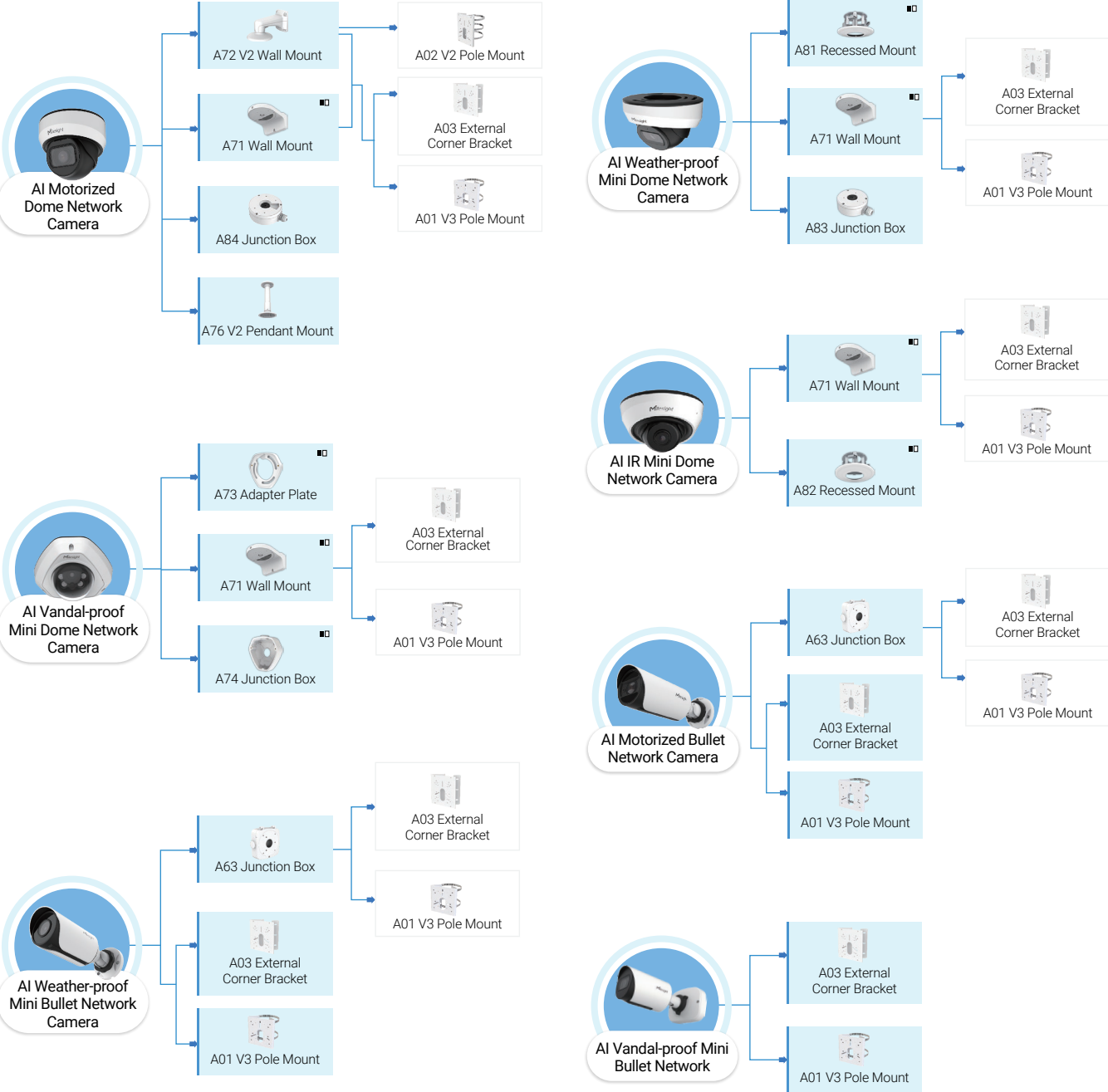
Accessories Map

Q SERIES

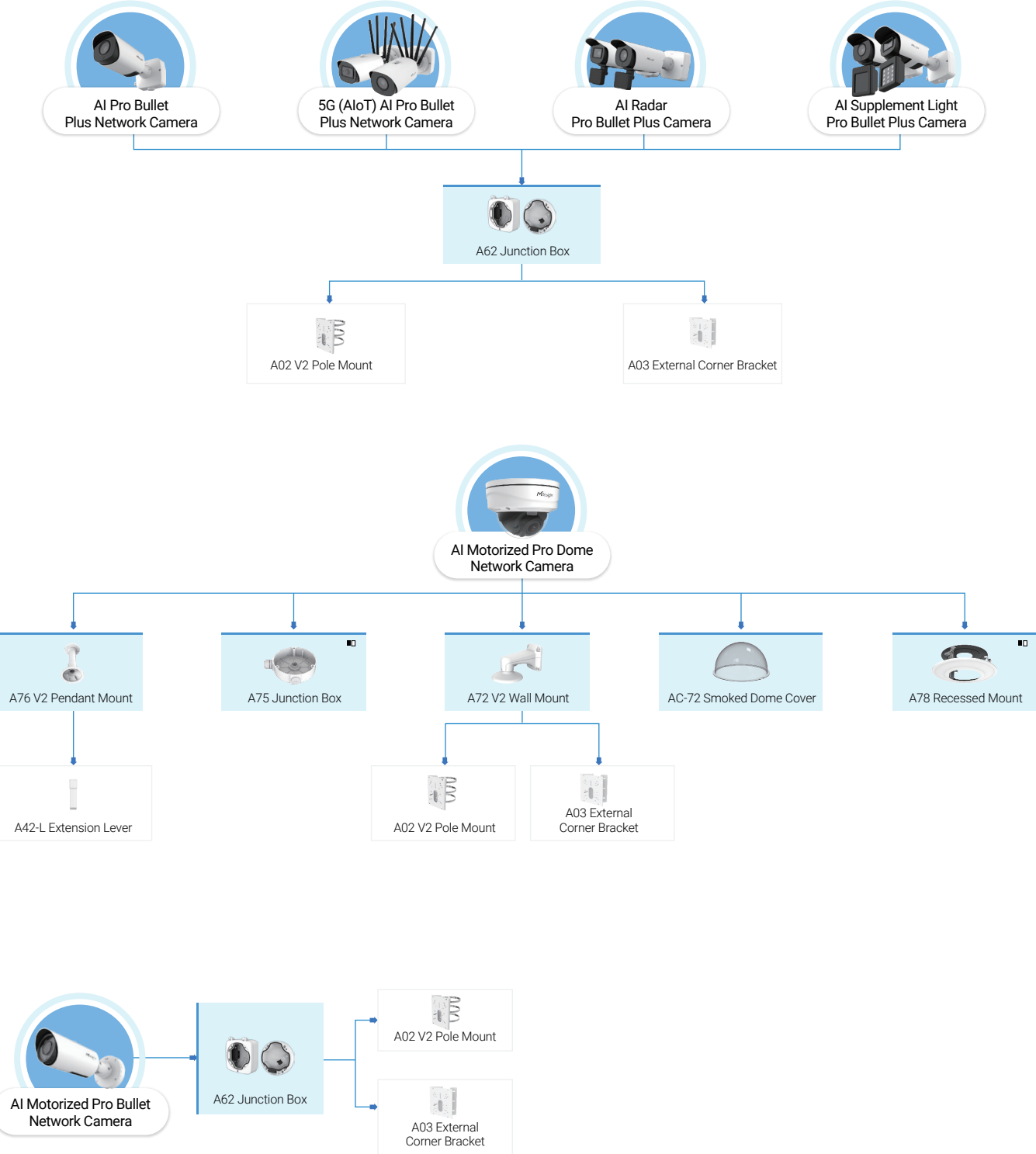




MINI SERIES

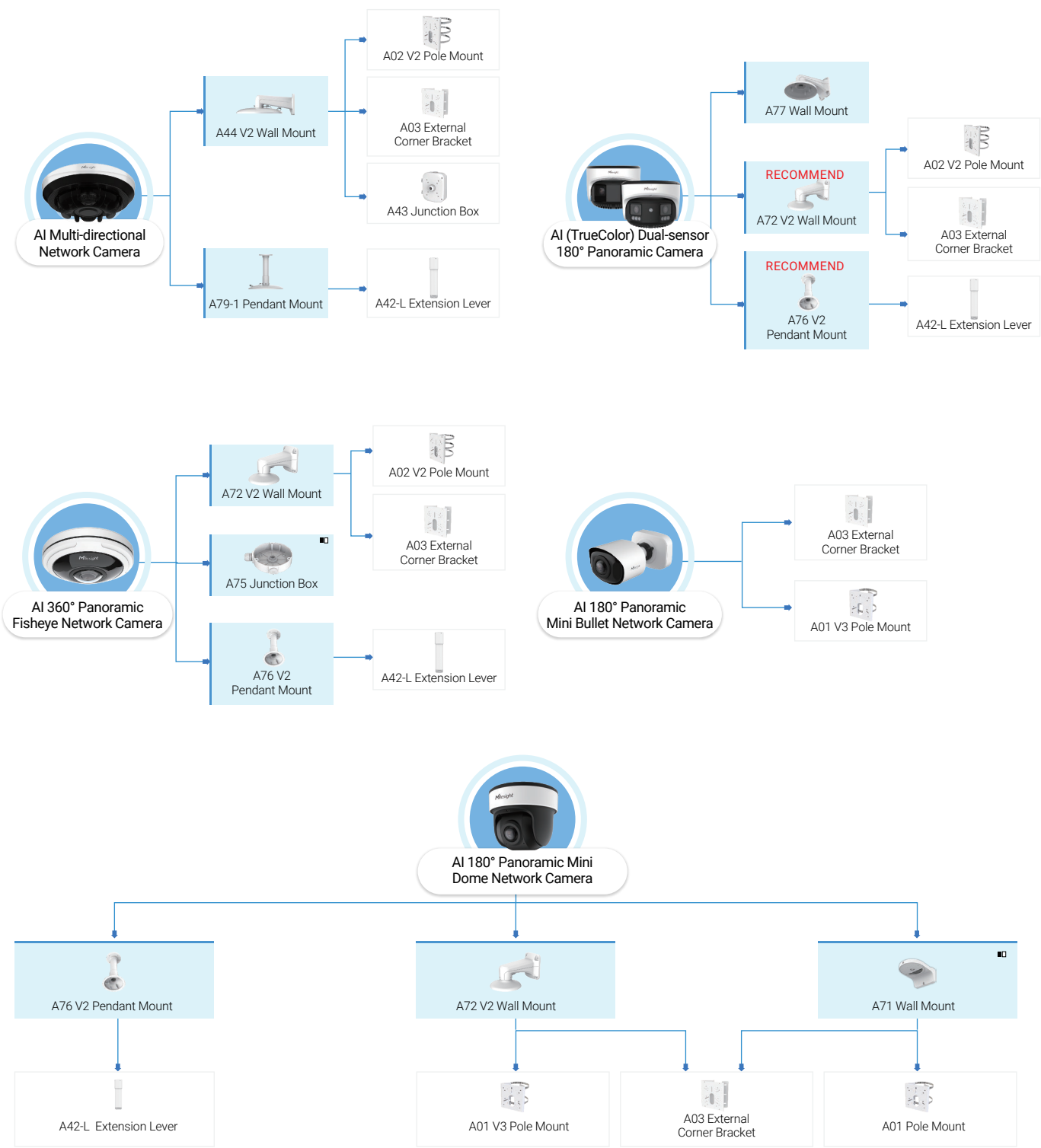


PRO SERIES

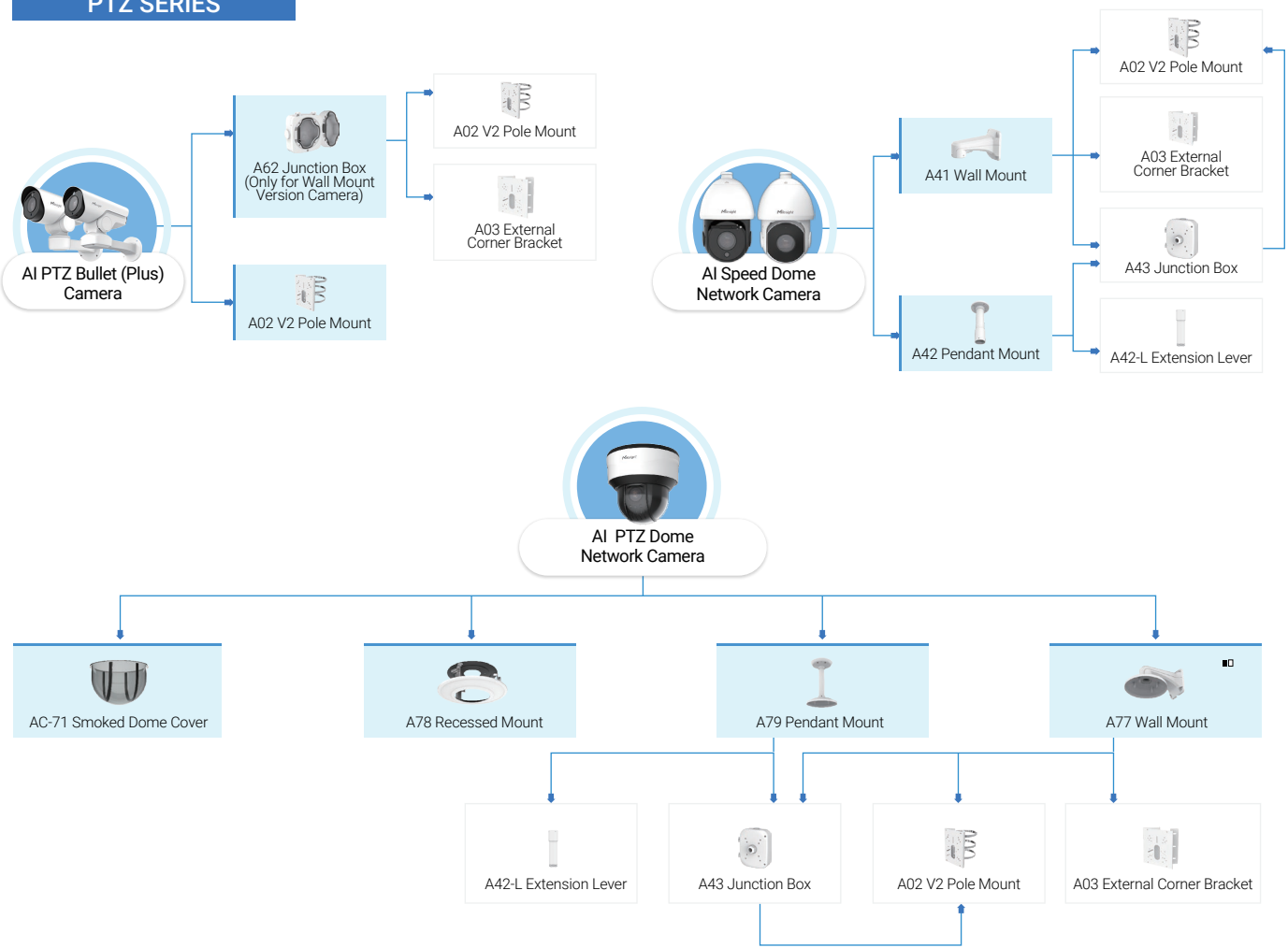




PANORAMIC SERIES

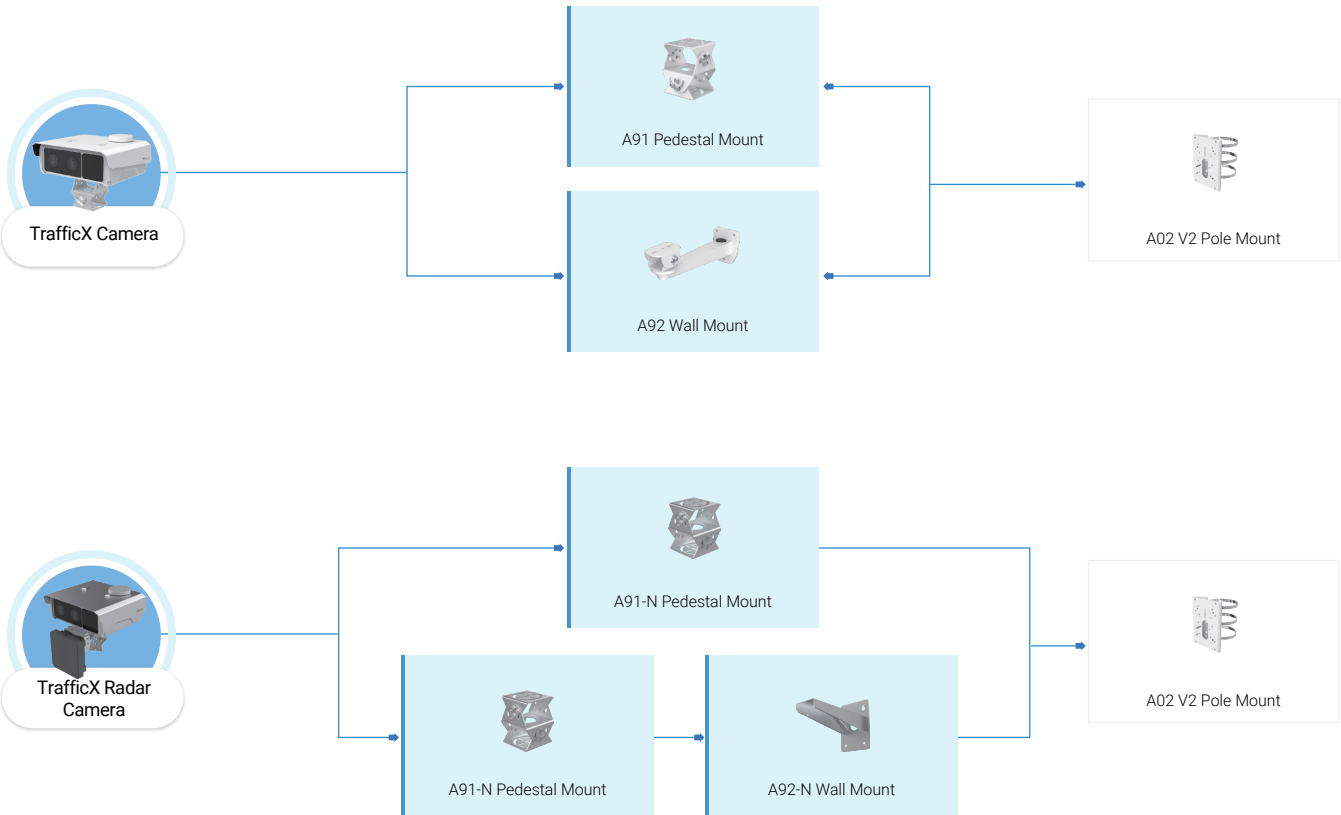


PTZ SERIES





INTELLIGENT TRAFFIC SERIES



SOLAR-POWERED SERIES

