

2022

- Better Inside, More in Sight ▪

# A MILESIGHT

Panoramic Camera Series

V3.0



Milesight Technology [www.milesight.com](http://www.milesight.com)  
Tel: +86-592-5922772(8801) - Sales +86-592+5922772(8701) - Support  
Mail: [sales@milesight.com](mailto:sales@milesight.com) [support@milesight.com](mailto:support@milesight.com)

MILESIGHT USA  
Tel: +1-800-561-0485  
Add: 220 NE 51st Street Oakland Park, Florida 33334, USA  
MILESIGHT KOREA  
Tel: +82-31-990-7732  
Add: 925, Anyang SK V1 Center,  
LS-ro 116beon-gil, Dongan-gu, Anyang-si, Korea  
MILESIGHT CHINA  
Tel: +86-592-5922772  
Add: Building C09, Software Park Phase III, Xiamen 361024, Fujian, China



[www.milesight.com](http://www.milesight.com)



180°/360° Wide Coverage to an Infinite World



# Milesight One for All



- AI
- AI-Video Analytics
- People Counting
- H.265+ HEVC
- ONVIF
- PoE
- 0.005Lux Starlight
- Super WDR
- Smart IR II Technology
- Defog
- Heat Map
- IP67&IK10
- Built-in Microphone
- 256G
- SIP
- HTML5
- Cyber Security

Milesight AI Panoramic Camera Series provides a full 180°/360° panoramic view with only one single-sensor. Featured with 4K/12MP ultra high resolution and wide-area coverage, the cameras deliver a detailed complete overview image with high clarity and no blind spots. Together with the compact and practical design, the panoramic series ensures an enjoyable user-experience.





## Panoramic View for All-round Surveillance

By reaching up to 12MP ultra high resolution, Milesight AI Panoramic Camera Series provides an amazing 180°/360° surround viewing experience with the finest details and the optimal user experience with On-board/Client-side Dewarping at your service.



### 180°/360° Panoramic View

Panoramic cameras have the natural talent to ensure total coverage and eliminate all blind spots within their 180°/360° FoV. Overlooking an entire area with only one single-sensor, Milesight panoramic cameras facilitate to economize on installation and management and lend themselves perfectly to wide-area surveillance.



### Stunning Dewarping Capability

Milesight AI panoramic cameras are all embedded with the powerful dewarping algorithm which can smoothly and fast transform original spherical images into plane images and minimize the geometric distortions caused by the camera lens.



### Up to 12MP Ultra High Resolution

Thanks to the 12MP ultra high resolution, Milesight AI panoramic cameras can capture images of the entire area with superb clarity and finest details. More details and pixels convey more information to ensure situational awareness and precise target identification.



### On-board/Client-side Dewarping

Milesight fisheye cameras support two ways of dewarping which bring users great flexibility during operation. On-board dewarping obtains the decoded video directly from the camera, furthering integrating with third-party VMS by offering undistorted images. While Client-side dewarping obtains the decoded video by the CPU of the management devices, providing immersive controls and dynamically change of viewing modes in the VMS client both in liveview and playback.

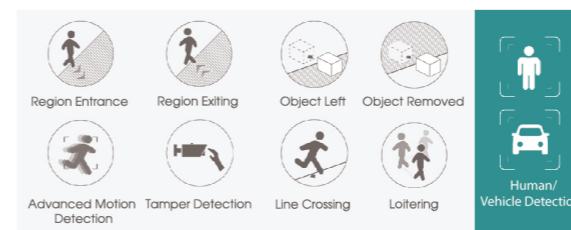
## I Intelligent Monitoring

Milesight AI Panoramic Camera Series provides high-quality image and intelligent functions. Powered by AI chip, it is capable of recognizing vast attributes of human, vehicle, and object pattern recognition models. As vehicle and human related events are very important in security monitoring, the filtering is supported to better optimize the efficiency.

<b>Behavior Analysis</b>	Fisheye Auto Tracking, Loitering, Object Left, Object Removed
<b>Passing</b>	Region Entrance, Region Exiting, Line Crossing
<b>Detection</b>	Motion Detection, Advanced Motion Detection, Tamper Detection
<b>Statistics for Market Intelligence</b>	Heat Map, People Counting

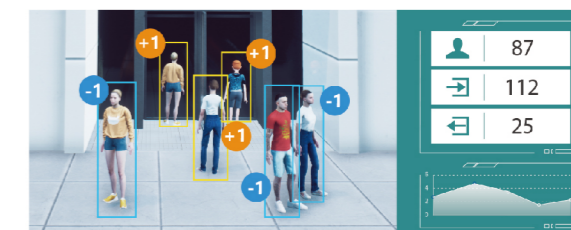
### AI Video Analytics

Milesight AI Panoramic Camera Series can intelligently filter objects to focus on human and vehicle detection in multiple events such as Region Entrance, Region Exiting, Loitering, Advanced Motion Detection, etc.



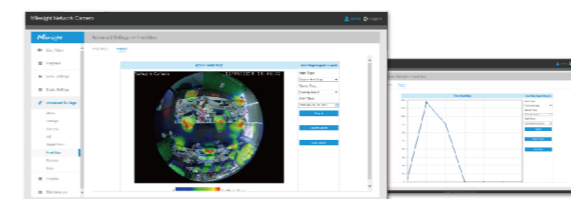
### Regional People Counting

High accuracy and real-time regional people counting based on AI algorithm, with statistic reports for further analysis, helps to make fast decisions on security management and increase the operational efficiency of the business.



### Advanced Heat Map

- Improve Store Layout
- Maximize Exposure of Products
- Reach Your Target Customer Precisely
- Drive Better Business Insights with Reports



### Fisheye Auto Tracking

- Real-time Target Tracking
- Zoom in for Details
- All-round Monitoring Without Blind Spots





# Superior Image Quality

Milesight AI Panoramic Camera Series is featured with a variety of image optimization functions and is able to adapt to various environments, delivering high-quality images.

<b>Image Enhancement</b>	0.005Lux Starlight, Smart IR II Technology
<b>Backlight</b>	120dB WDR, BLC, HLC
<b>Image Stability</b>	High Quality Deblur



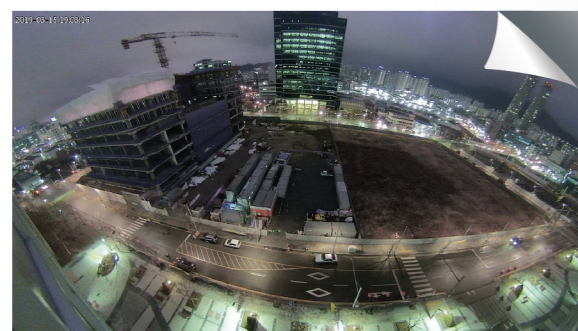
## Smart IR II Technology, 180°/360° Uniform IR Coverage

The advanced Smart IR II Technology enables Milesight AI panoramic cameras to adjust the IR illumination intensity, which greatly optimizes the IR performance and ensures 24/7 surveillance coverage. While with the combination of High Beams and Low Beams, the built-in IR illuminators are elaborately designed to realize a uniform distribution within 180°/360° FoV.



## High-quality Deblur

With the algorithm of deblur, Milesight AI panoramic cameras offer fast shutter speeds under certain gain range, which can remove blurring artifacts caused by motion and improve image quality in good light conditions for fast-moving objects.

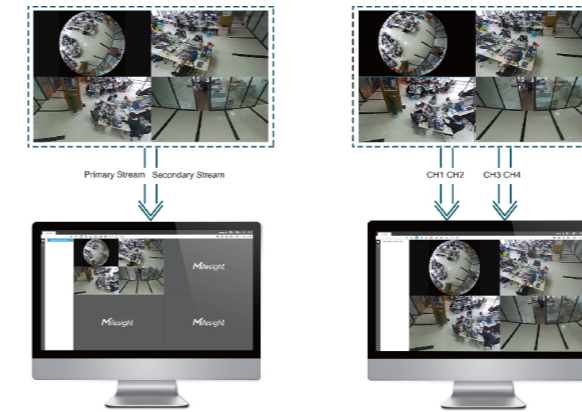


## 0.005Lux Starlight & 120dB WDR

Adopting Sony STARVIS Sensors, the AI Panoramic Camera Series boasts to deliver outstanding image performance in all kinds of demanding lighting conditions, especially in ultra low light environments. The cameras are also featured with 120dB WDR to combat the high-contrast lighting conditions and details are visible in both dark and light areas of the scene.

# Broad Interoperability

Being customer-oriented, Milesight devotes its energies to maximize the interoperability of Milesight surveillance system. Milesight AI Panoramic Camera Series features various compatible technologies, bringing excellent user-experience.



## Two Compatible Modes

Milesight creatively develops the Bundle-stream Mode to bundle all channels into one single stream and send it to NVR or back-end VMS, which can be rather simple for compatibility. While in Multi-Channel Mode, it sends all the original channels to NVR or VMS, allowing to configure the channels separately for better achieving more flexible playback ways.

## HTML5 Streaming Ready

The barrier-free connection between Milesight cameras and browsers are built with HTML5 streaming to access to all configurations and functions without downloading extra plug-in.

## ONVIF Profile G/Q/S/T

Supporting ONVIF profile G/Q/S/T, Milesight AI Panoramic Camera Series is easy to be integrated into the security systems on the basis of the ONVIF protocols.

# Exquisite Design

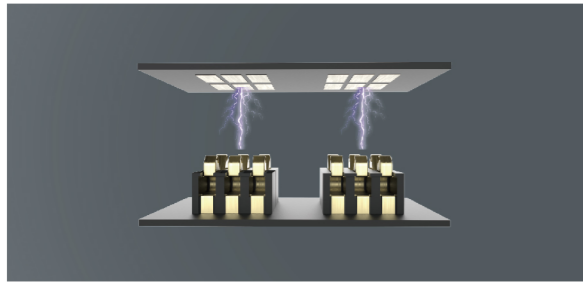
Milesight AI Panoramic Camera Series earns its high reputation for its robust and unique structure design from the inside out. Insisting on the design philosophy of neatness and exquisiteness, it combines the practicability and aesthetics without compromise on the functionality.

## High-class Durability

Milesight AI panoramic cameras are engineered with IP67-rated and IK10-rated housing to guarantee a stable and reliable operation even under rough conditions and in harsh climates. It can withstand extreme temperatures as low as -40°C and as high as 60°C and still deliver superior performance.







## Point-contact Power Supply

Fusing the simplicity and usability into details, Milesight creatively introduces the point-contact power supply design into the AI Panoramic Camera Series. Unlike the traditional way of cable power supply, it offers users a lot of benefits like space savings, weight savings, faster installation and less maintenance.

## Aesthetic Design

Poring over these bodies, you can find the merits highlighting from inside out. Featuring the screw-free design, the fisheye camera is designed for discreetness and ease to place. Inherited by the compact and elegant shape design, the AI 180° panoramic camera series is so distinct that you would recognize it from Milesight at a glance.

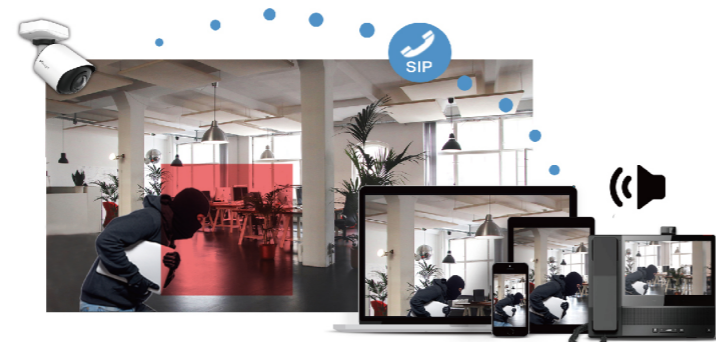


## Intercommunication

Milesight AI Panoramic Camera Series with SIP can be integrated with VoIP systems to build more efficient and convenient security solutions.

## SIP Solution with Limitless Possibilities

Featured with built-in microphone and Audio I/O, Milesight AI panoramic cameras support SIP function which can integrate with various VoIP telephony systems to build a complete communication system. Then operators can receive an alarm phone call in time and check the real-time audio/video monitoring by VoIP to react instantly.



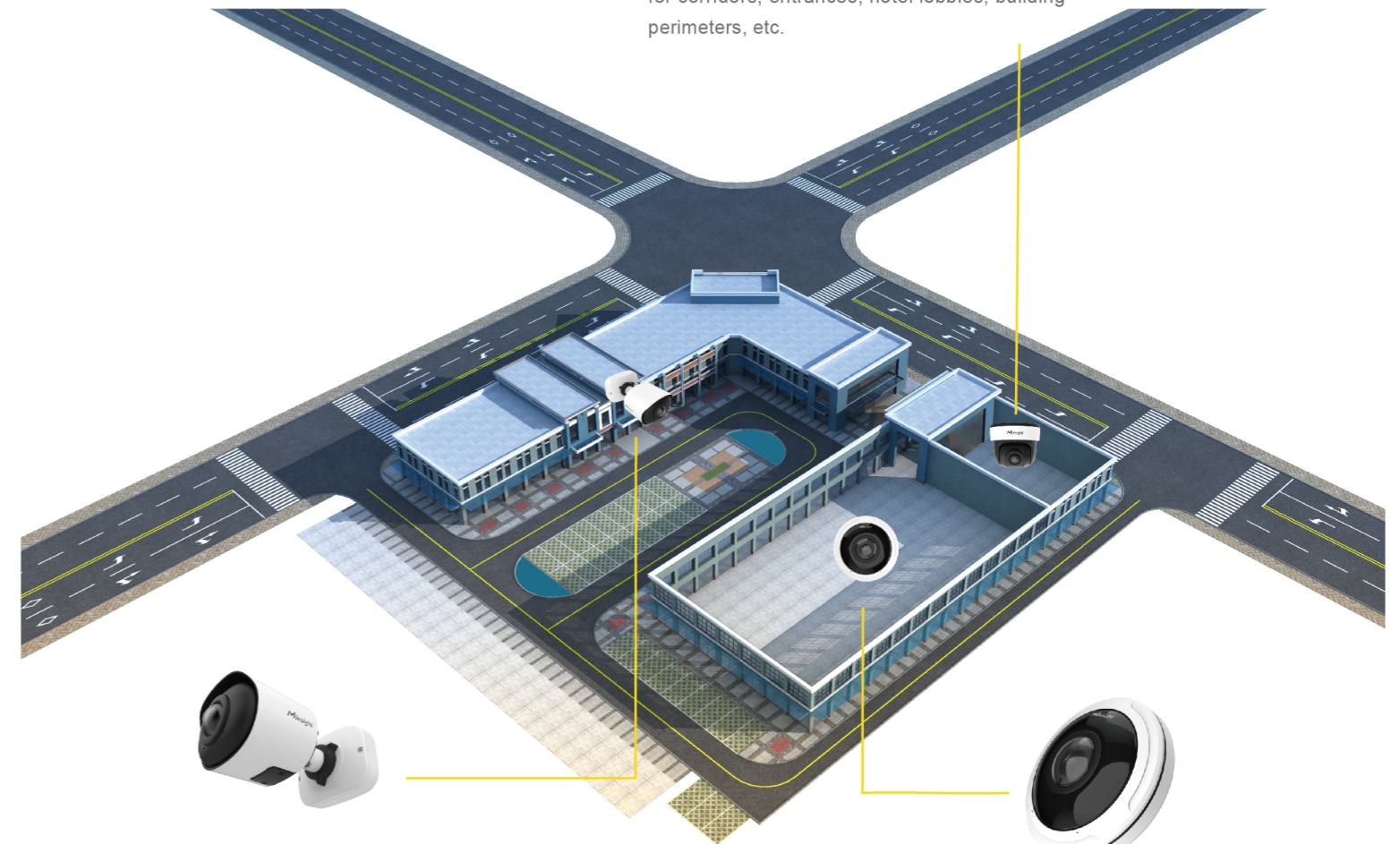
## Various Application Scenarios

Achieving such a wide view within a single image, Milesight AI Panoramic Camera Series consists of AI 180° Panoramic Mini Bullet Camera, AI 180° Panoramic Mini Dome Camera and AI 360° Panoramic Fisheye Camera which covers a diverse range of applications and caters for different preferences in the market. With 3-axis architectures, the AI Panoramic Mini Bullet Camera allows the technician to install the camera on a wall at any angle by positioning lens freely. And the dome shape design of AI Panoramic Mini Dome Camera blends well in any environment. As for the Fisheye Camera, it features 360° panoramic view, which is ideal for large space monitoring.



### AI 180° Panoramic Mini Dome Camera

Enjoying 180° ultra-wide field of view and zoom in with 4K high resolution, Milesight AI 180° Panoramic Mini Dome Camera is suitable for corridors, entrances, hotel lobbies, building perimeters, etc.



### AI 180° Panoramic Mini Bullet Camera

It gives a complete 180° panoramic view and is ideal for perimeter surveillance such as hallways, streets, building perimeters, etc.



### AI 360° Panoramic Fisheye Camera

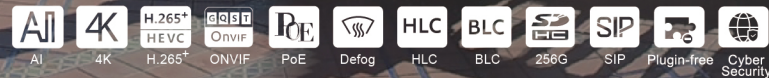
Supporting a variety of installation accessories, it features a complete 360° overview, which is tailored for retail stores, hotels, schools, and offices or anywhere you need a complete overview 24/7.



# AI 180° Panoramic Mini Bullet Network Camera



MS-C5365-PA/MS-C8165-PA



- 180° Panoramic View
- Up to 4K Ultra High Resolution
- AI Deep Learning
- Stunning Dewarping Capability
- Advanced Heat Map
- Smart IR II with 15m IR Distance
- 0.005Lux Starlight
- 120dB Super WDR
- High-quality Deblur
- IP67&IK10 Full Protection
- Built-in Microphone



## 3-Axis Mechanical Design

The considerate structure and the 3-axis mechanical design make sure of the network camera's best ease of use, realizing the greatest user experience.



## Integrated Junction Box

The well-designed Integrated Junction Box ensures efficient and simple installation. It enlarges the space to make cable connection neat and as easy as a piece of cake.

## Smart IR II Technology for Whole IR Coverage

With two IR LEDs which have angles to truly realize the 180° IR coverage, the IR design also features adjustable illumination intensity IR LEDs to guarantee IR performance.



Model(Megapixel)	MS-C5365-PA (5MP)	MS-C8165-PA (4K)
Image Sensor	1/2.8" Progressive Scan CMOS	
Lens	1.68mm@F2.0	
Field of view	H180°/V95°	H180°/V86°
Max. Frame Rate	30fps@(2592x1944)(Original)	25fps@(3840x2160)
Min. Illumination	Color: 0.005Lux@F1.2 Color: 0.008Lux@F2.0 B/W: 0Lux with IR on	Color: 0.01Lux@F1.2 Color: 0.012Lux@F2.0 B/W: 0Lux with IR on
WDR	120dB Super WDR	
Video Compression	H.265+/H.265(HEVC)/H.264+/H.264/MJPEG	
Protocol	IPv4/IPv6, ARP, TCP, UDP, RTCP, RTP, RTSP, RTMP, HTTP, HTTPS, DNS, DDNS, DHCP, FTP, NTP, SMTP, SNMP, UPnP, Bonjour, SIP, PPPoE, VLAN, 802.1x, QoS, IGMP, ICMP, SSL	
Dimensions/Weight	95.8mmX74mmX158.5mm/630g	

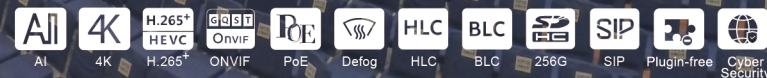




# AI 180° Panoramic Mini Dome Network Camera



MS-C5376-PA/MS-C8176-PA



- 180° Panoramic View
- Up to 4K Ultra High Resolution
- AI Deep Learning
- Stunning Dewarping Capability
- Advanced Heat Map
- New Generation Panoramic IR Technology
- 0.005Lux Starlight
- 120dB Super WDR
- High-quality Deblur
- IP67&IK10 Full Protection
- Built-in Microphone



Microphone

## New Generation Panoramic IR Technology

Milesight new generation panoramic IR technology comprehensively levels up the night vision quality, achieving the industry-leading 15m IR distance with fully uniform coverage and IR anti-reflection panel design.



Vertical Adjustment: 5°~175°

Horizontal Adjustment: 0°~180°

## Exquisite Design & Easy Installation

The dome shape design offers a wide range of surveillance and blends well in any environment. Once the position of the lens is settled, all you need is tightening one set screw to fix it for good.

Large Space for Easy Cable-sorting



## Integrated Junction Box

Coming with the concealed cable winding design, the integrated junction box not only ensures the camera a simplified installation, but also provides higher operation stability.

Model(Megapixel)	MS-C5376-PA (5MP)	MS-C8176-PA (4K)
Image Sensor	1/2.8" Progressive Scan CMOS	
Lens	1.68mm@F2.0	
Field of view	H180°/V95°	H180°/V86°
Max. Frame Rate	30fps@(2592x1944)(Original)	25fps@(3840x2160)
Min. Illumination	Color: 0.005Lux@F1.2 Color: 0.008Lux@F2.0 B/W: 0Lux with IR on	Color: 0.01Lux@F1.2 Color: 0.012Lux@F2.0 B/W: 0Lux with IR on
WDR	120dB Super WDR	
Video Compression	H.265+/H.265(HEVC)/H.264+/H.264/MJPEG	
Protocol	IPv4/IPv6, ARP, TCP, UDP, RTCP, RTP, RTSP, RTMP, HTTP, HTTPS, DNS, DDNS, DHCP, FTP, NTP, SMTP, SNMP, UPnP, Bonjour, SIP, PPPoE, VLAN, 802.1x, QoS, IGMP, ICMP, SSL	
Dimensions/Weight	Φ127mmX107mm/853g	



# AI 360° Panoramic Fisheye Network Camera



MS-C9674-PA



- 360° Panoramic View
- Up to 12MP Ultra High Resolution
- AI Deep Learning
- Stunning Dewarping Capability
- On-board/Client-side Dewarping
- Fisheye Auto Tracking
- Advanced Heat Map
- Smart IR II with 15m IR Distance
- 0.005Lux Starlight
- 120dB Super WDR
- High-quality Deblur
- IP67&IK10 Full Protection
- Screw-free Design
- Point-contact Power Supply
- Various Accessories



## Exquisite Design for Better User-experience

The Power Supply Board replaces the traditional way of power supply with cable, which frees interior space, making the camera an art of surveillance inside and out.

## Various Accessories for Easy Installation

Milsight offers various installation accessories to make it easy to install and enhance the flexibility of installation needs.



A72 Wall Mount



A75 Junction Box



A76 Pendant Mount

Model(Megapixel)	MS-C9674-PA (12MP)
<b>Image Sensor</b>	1/1.7" Progressive Scan CMOS
<b>Lens</b>	1.98mm@F2.8
<b>Field of view</b>	Ceiling Mount: 360°; Wall Mount: 180°; Flat Mount: 360°
<b>Max. Input Resolution</b>	4000x3000
<b>Min. Illumination</b>	Color: 0.01Lux@F1.2 Color: 0.05Lux@F2.8 B/W: 0Lux with IR on
<b>WDR</b>	120dB Super WDR
<b>Video Compression</b>	H.265+/H.265(HEVC)/H.264+/H.264
<b>Protocol</b>	IPv4/IPv6, ARP, TCP, UDP, RTCP, RTP, RTSP, RTMP, HTTP, HTTPS, DNS, DDNS, DHCP, FTP, NTP, SMTP, SNMP, UPnP, Bonjour, SIP, PPPoE, VLAN, 802.1x, QoS, IGMP, ICMP, SSL
<b>Dimensions/Weight</b>	Φ140mmX45.4mm/700g



# INTELLIGENT VIDEO SURVEILLANCE SOLUTIONS



## AI Mini & Pro Camera Series

Compact Size, Up-most Quality

- Up to 4K Ultra High Definition
- Smart IR II Technology
- 0.001Lux Ultra Low-light
- 3 in 1 Super WDR- 140dB
- Advanced Heat Map

## AI LPR Camera Series

Stand-alone LPR Solution

- Advanced 3D Radar Technology
- AI-powered LPR Algorithm
- Black/White List Management
- 95%+ Recognition Accuracy
- 200km/h Recognizable Speed
- Fully Integrated with Milesight NVR/CMS



## AI PTZ Camera Series

PTZ to Move Your World

- 360° Flexible Rotation and 42X Optical Zoom
- Up to 4K Ultra High Definition
- Smart IR II Technology
- 1/1.8" STARVIS Starlight Sensor
- PTZ Auto Tracking



## NVR Series

All-in-one Solution for Extreme Reliability

- Up to 64-CH Video Input
- Up to 80TB Storage
- 4K Decoding & Recording
- Up to 24\*PoE Plug and Play
- ANR/RAID/N+1 Hot Spare
- Enterprise ANPR Management



## AI Panoramic Camera Series

One for All, All in 360°

- Up to 12MP Ultra High Definition
- 180°/360° Panoramic View
- On-board/Client-side Dewarping
- Fisheye Auto Tracking
- Advanced Heat Map

## VMS Enterprise

- Milesight VMS Enterprise Professional and Intelligent Video Management Software for Medium to Large-scale Projects
- M-VMS Mobile (Android) Manage Anytime with M-VMS Mobile



SOFTWARE



Founded in 2011, Milesight is a fast-growing AIoT solution provider committed to offering the value-added services and cutting-edge technologies. Based on video surveillance, Milesight expands its value proposition into IoT and communications industries, featuring Internet of Things communication, and artificial intelligence technologies as its core. Through a worldwide network of distributors and system integrators in over 120 countries and regions, Milesight disseminates its products and services in comprehensive solutions with a hope to connect physical and digital worlds together to elevate AIoT intelligence to the next level.



## About Milesight

### INNOVATION



Milesight aims to bring customers more added value through innovative solutions, continually challenging the conventional for a smarter and safer future.

Attaching high importance to the R&D, Milesight keeps a fast and accurate turnaround to the quick developing security market and brings state-of-the-art technologies.



### QUALITY

Quality is our foundation. With industry criteria embedded in the design details of Milesight products from inside out, we're in the endless pursuit of precise spirit to make perfection more perfect.



We have attained extensive international standards of certification, including CE/ FCC/LVD/ROHS/ISO9001/UL, etc.

### SERVICE

Milesight provides the exclusive and efficient support service that we stay close with our customers to follow the issue from beginning to end to make sure it would be well solved.



In Milesight, we treasure every customer, as a sustainable and win-win partnership is what we've long been striving for.