

Star4Live

Quick Guide

Manual Version: V2.02

Copyright Statement

No part of this manual may be copied, reproduced, translated or distributed in any form by any means without prior content in writing from our company (referred to as us hereafter).

The product described in this manual may contain proprietary software owned by our company and its possible licensors. Unless permitted, no one is allowed to copy, distribute, modify, abstract, decompile, disassemble, decrypt, reverse engineer, rent, transfer, or sublicense the software in any form by any means.

Privacy Protection Reminder

Our company complies with appropriate privacy protection laws and is committed to protecting user privacy. You may want to read our full privacy policy at our website and get to know the ways we process your personal information. Please be aware, using the product described in this manual may involve the collection of personal information such as face, fingerprint, license plate number, email, phone number, GPS. Please abide by your local laws and regulations while using the product.

Disclaimer of Liability

- To the extent allowed by applicable law, in no event will our company be liable for any special, incidental, indirect, consequential damages, nor for any loss of profits, data, and documents.
- The product described in this manual is provided on an "as is" basis. Unless required by applicable law, this manual is only for informational purpose, and all statements, information, and recommendations in this manual are presented without warranty of any kind, expressed or implied, including, but not limited to, merchantability, satisfaction with quality, fitness for a particular purpose, and noninfringement.
- Users must assume total responsibility and all risks for connecting the product to the Internet, including, but not limited to, network attack, hacking, and virus. We strongly recommends that users take all necessary measures to enhance the protection of network, device, data and personal information. Our company disclaims any liability related thereto but will readily provide necessary security related support.
- To the extent not prohibited by applicable law, in no event will our company and its employees, licensors, subsidiary, affiliates be liable for results arising out of using or inability to use the product or service, including, not limited to, loss of profits and any other commercial damages or losses, loss of data, procurement of substitute goods or services; property damage, personal injury, business interruption, loss of business information, or any special, direct, indirect, incidental, consequential, pecuniary, coverage, exemplary, subsidiary losses, however caused and on any theory of liability, whether in contract, strict liability or tort (including negligence or otherwise) in any way out of the use of the product, even if our company has been advised of the possibility of such damages (other than as may be required by applicable law in cases involving personal injury, incidental or subsidiary damage).

About This Manual

- This manual is intended for multiple software versions, and the illustrations and descriptions in this manual may be different from the actual GUI and functions of the software.
- Despite our best efforts, technical or typographical errors may exist in this manual. Our company cannot be held responsible for any such errors and reserves the right to change the manual without prior notice.
- Users are fully responsible for the damages and losses that arise due to improper operation.
- Our company reserves the right to change any information in this manual without any prior notice or indication. Due to such reasons as product version upgrade or regulatory requirement of relevant regions, this manual will be periodically updated.

Conventions

Convention	Description
Boldface font	Commands, keywords, parameters and GUI elements such as window, tab, dialog box, menu, button, etc.
>	Separate a series of menu items, for example, Device Management > Add Device .

Contents

1 Introduction	1
Overview	1
Typical Networking	1
Networking 1	1
Networking 2	1
Network Connection	2
2 Web Operations	2
Sign Up and Log In	2
Add a Device	3
Add an Organization	4
Retrieve Device Password	4
Access an Online Device	5
Share an Online Device	5
Devices Shared to Me	5
View Sharing Records	6
Change Personal Information	6
Change Password	6
View Login Records	6

1 Introduction

Overview

The general solution, based on the cloud servers, mobile surveillance clients, and smart terminal devices, employing the technologies of cloud computing, mobile Internet and big data, aims to offer smart, comfortable and secure information services to small and medium-sized enterprises.

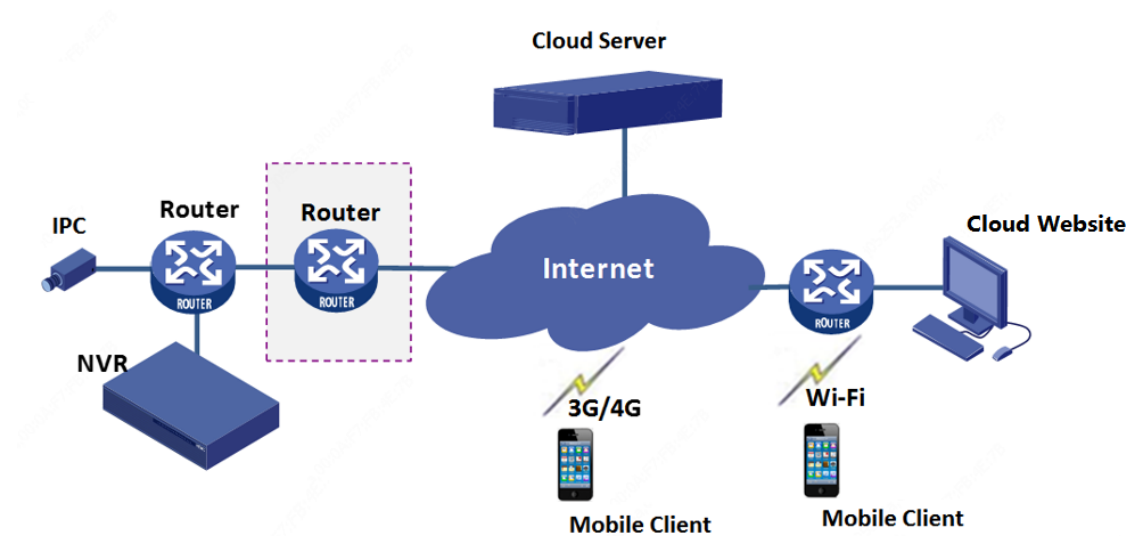
Typical Networking

The following illustrations show some typical networking scenarios.

- Clients include mobile client and Web client (Cloud website).
- Devices include IP Camera (IPC) and Network Video Recorder (NVR).

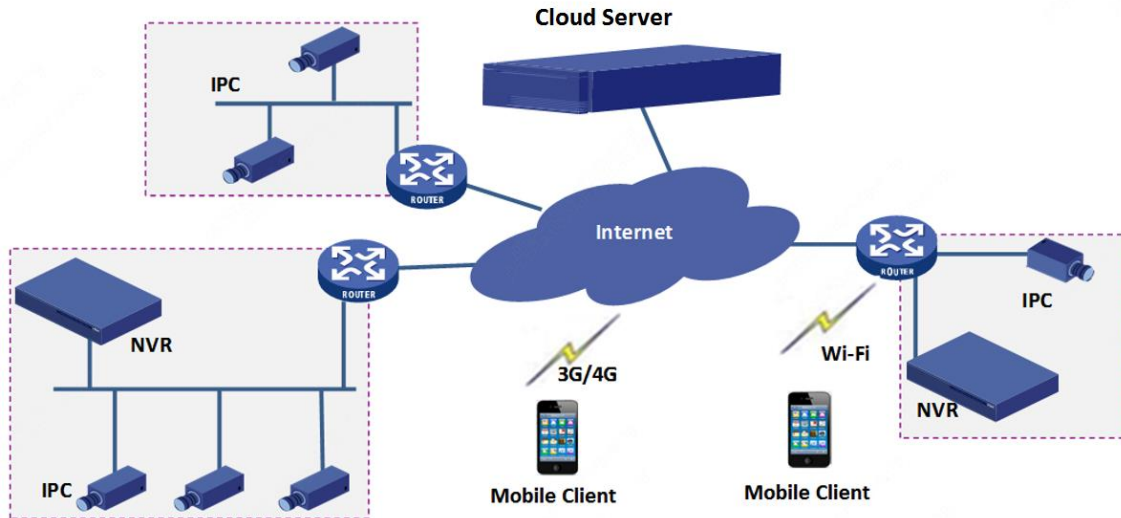
Networking 1

Devices are connected to the Internet by connecting to a router behind another one; devices and clients are in different LANs.



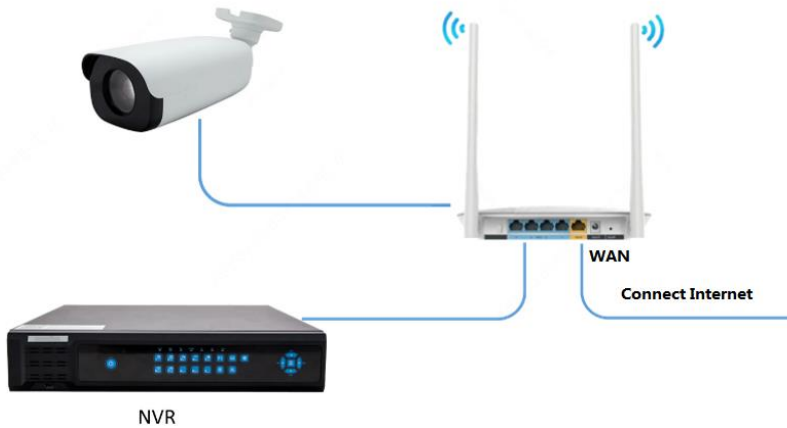
Networking 2

Devices in different LANs are connected to the Internet via a router; clients are connected to the Internet via cellular data or Wi-Fi.



Network Connection

Connect devices and the router with network cables, and connect the router to the Internet. Connect the mobile phone to the Internet via Wi-Fi or cellular data. This illustration is for reference only.



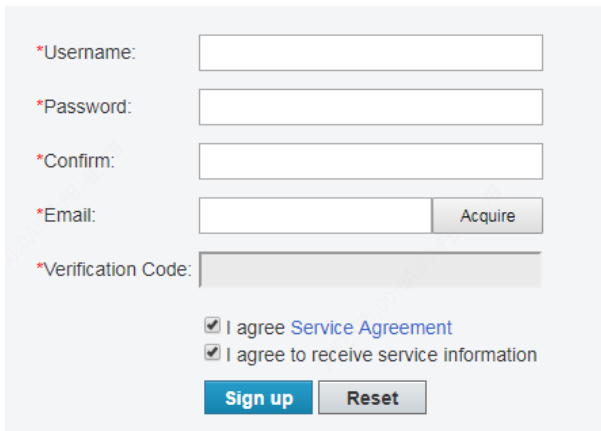
2 Web Operations

Sign Up and Log In

Sign up for a cloud account. With a cloud account you can add devices to cloud and view live video and playback remotely, for example, on a mobile phone.

1. Open your Web browser, go to www.star4live.com and then click **Sign up** in the upper right corner.

2. Complete the settings to sign up. You are logged in when sign-up is complete.



*Username:

*Password:

*Confirm:

*Email:

*Verification Code:

I agree [Service Agreement](#)

I agree to receive service information



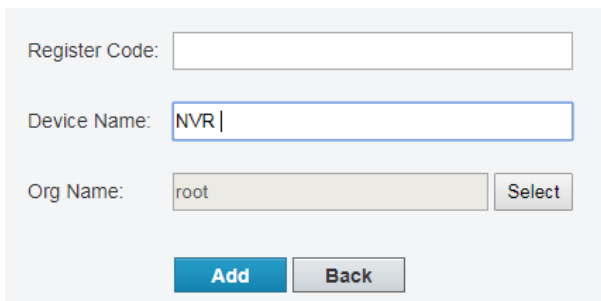
NOTE!

- If you forgot your password, click **Forgot Password** in the login page, and follow the instructions to reset password.
- The cloud account you signed up on the cloud website can also be used on the app.

Add a Device

Add a device to bind it to your cloud account.

1. On the **Device List** page, click . The **Add Device** page is displayed.
2. Enter the register code and device name (on the cloud).



Register Code:

Device Name:

Org Name:




NOTE!

- The register code is displayed on the device's Web interface (also on NVR's local interface).
- For security, a device can be bound to one cloud account only, and it cannot be bound to another cloud account until the current binding is cancelled.


3. Click **Add**. The device appears under **My Cloud Devices**.




NOTE!

To delete a device, select the device in the device list and then click .

Example: My Cloud Devices


My Cloud Devices 											
Select	No.	Org	Device Name	Device Type	Device IP	Latest Online Time	Status	Share Device	Change Device	Retrieve Password	Access Device
<input type="checkbox"/>	1	root	NVR 100.53	NVR	61.164.52.172	1/3/2020 10:47:39 AM	Online	Share	Change	Retrieve	Access

The following operations are available on this page:

- To delete device(s), select device(s) in the list and then click .
- To modify device name or the organization it belongs to, click **Change**.

Add an Organization

Add organizations, and then you can add devices to organizations for unified management.



1. Click . The **Add Org** page is displayed.
2. Select an organization to which the new organization belongs. Enter a name for the new organization, and then click **Confirm**. The new organization appears on the **Org List** page.

Upper Org Name:

Org Name:



NOTE!

Click  to change an organization name; click  to delete an organization. An organization that contains device(s) or sub-organizations cannot be deleted.

Retrieve Device Password

Use this function to get a temporary password if you forgot your device password. This function is only available for online devices.

1. Click **Retrieve**.
2. Click **Acquire**. The verification code will be sent to the email address you used to sign up.

3. Enter the verification code, and click **Retrieve**. A temporary password will be displayed. Use the password to log in to your device.

Device Name: NVR 100.53

Serial Number: 2XXXXXXXXXXXX1

Valid Date: 20200103

Email: XXXXXXXXXXXXXXX@XXXXXX

Verification Code:

Temporary Password: **Cf892888** Note: This temporary password is valid only on the specified day. Once logged in, please change the admin password immediately!

Access an Online Device

Click **Access** to access the Web interface of an online device.



NOTE!

If the device status is **Online(NAT)**, you need to install a plug-in before you can access the device. Click **Download** on the top banner to download and install the plug-in.

Share an Online Device

Click **Share** to share an online device with another cloud account. Set a valid period and permissions for the sharing. The permissions are configured on the device.

Device Name: IPC

Share To: user

Valid Till: 2020-01-29 00:00:00

User Rights: admin

Description:

Devices Shared to Me

View, edit and access the devices shared by other cloud accounts.

Shared Cloud Devices										
Select	No.	Org	Device Name	Device IP	Owner	Valid Until	Description	Status	Change Device	Access Device
<input type="checkbox"/>	1	root	NVR	61.164.52.169	jd	11/20/2019 12:00:00 AM		Online(NAT)	Change	Access

Perform the following operations as needed:

- Click **Change** to change device name and the organization it belongs to.
- Select the device(s) first and then click to cancel the sharing. The devices disappear from the list after the sharing is canceled.
- Click **Access** to access the Web interface of an online device.

View Sharing Records

View the records of your cloud account sharing devices to other cloud accounts.

Sharing Records									
Select	No.	Device Name	Share To	Email	User Role	Valid Until	Description		
<input type="checkbox"/>	1	Test200.200.200.19	hi 7	1 i@163.com	admin	11/20/2019 12:00:00 AM			



NOTE!

Deleting a sharing record will also stop sharing the device.

Change Personal Information

View or change your registered email address on the cloud website.

1. Click **Personal Information** under **Welcome** in the upper right corner.
2. Click **Change** and then follow the on-screen instructions to change the email address.

Change Password

Change the password of your cloud account. You need to log in again after the password is changed.

1. Click **Change Password** under **Welcome** in the upper right corner.
2. Enter the current and the new passwords by following on-screen instructions.

View Login Records

View login history of your cloud account.

1. Click **Show Log** under **Welcome** in the upper right corner.
2. The list shows information about the latest 10 logins, including time and IP address.