

NVR-B3601.28.47.201023 Release Notes

Zhejiang Uniview Technologies Co., Ltd.

NVR-B3601.28.47.201023 Release Notes

Keywords: Version information, usage notes, precautions.

Abstract: This document provides information about the **NVR-B3601.28.47.201023** board software, including version information, usage notes, precautions, and features.

Acronym

| Acronym | Full Name |
|---------|------------------------|
| NVR | Network Video Recorder |

Contents

- 1 Version Information..... 3**
 - 1.1 Version Number3
 - 1.2 Applied Product Models3
 - 1.3 Release History4
- 2 Usage Notes 4**
- 3 Software Features 4**
- 4 Version Change Description 5**
 - 4.1 Feature Change Description5
 - 4.2 Operation Change Description6
 - 4.3 Solved Issues6
- 5 Related Documents and Delivery Method..... 6**
- 6 Version Upgrade Guidance 7**
 - 6.1 Precautions7
 - 6.2 Upgrade Procedure7
 - 6.3 Upgrade Through the System Interface7
 - 6.4 Upgrade Through the Web Interface8

1 Version Information

1.1 Version Number

NVR-B3601.28.47.201023

1.2 Applied Product Models

Table 1 Applied Product Models

| Product Models | Description |
|-----------------|--|
| NVR302-32S | 2 slots, 32-ch, H.264 and H.265, 4K ultra HD. |
| NVR304-16S | 4 slots, 16-ch, H.264 and H.265, 4K ultra HD. |
| NVR304-32S | 4 slots, 32-ch, H.264 and H.265, 4K ultra HD. |
| NVR304-09S | 4 slots, 9-ch, H.264 and H.265, 4K ultra HD. |
| NVR301-04X | 1 slots, 4-ch, H.264 and H.265, 4K ultra HD. |
| NVR301-08X | 1 slots, 8-ch, H.264 and H.265, 4K ultra HD. |
| NVR301-16X | 1 slots, 16-ch, H.264 and H.265, 4K ultra HD. |
| NVR301-08LX-P8 | 1 slot, 8-ch, 8 PoE interfaces plastic shell NVR , H.264/H.265 and 4K ultra HD. |
| NVR301-08X-P8 | 1 slot, 8-ch, 8 PoE interfaces , H.264/H.265 and 4K ultra HD. |
| NVR301-04LX-P4 | 1 slot, 4-ch, 4 PoE interfaces plastic shell NVR , H.264/H.265 and 4K ultra HD. |
| NVR301-04X-P4 | 1 slot, 4-ch, 4 PoE interfaces , H.264/H.265 and 4K ultra HD. |
| NVR302-08S2-P8 | 2 slot, 8-ch, 8 PoE interfaces , H.264/H.265 and 4K ultra HD. |
| NVR302-16S2-P16 | 2 slot, 16-ch, 16 PoE interfaces , H.264/H.265 and 4K ultra HD. |
| NVR301-16LX-P8 | 1 slot, 16-ch, 8 PoE interfaces plastic shell NVR , H.264/H.265 and 4K ultra HD. |
| NVR301-04E2-P4 | 1 slot, 4-ch, 4 PoE interfaces , H.264/H.265 and 4K ultra HD. |
| NVR301-08E2-P8 | 1 slot, 8-ch, 8 PoE interfaces , H.264/H.265 and 4K ultra HD. |
| NVR301-16E2-P8 | 1 slot, 16-ch, 8 PoE interfaces , H.264/H.265 and 4K ultra HD. |
| NVR301-08LE2-P8 | 1 slot, 8-ch, 8 PoE interfaces plastic shell NVR , H.264/H.265 and 4K ultra HD. |
| NVR301-16LE2-P8 | 1 slot, 16-ch, 8 PoE interfaces plastic shell NVR , H.264/H.265 and 4K ultra HD. |
| NVR301-04LE2-P4 | 1 slot, 4-ch, 4 PoE interfaces plastic shell NVR , H.264/H.265 and 4K ultra HD. |
| NVR301-04E2 | 1 slots, 4-ch, H.264 and H.265, 4K ultra HD. |
| NVR301-08E2 | 1 slots, 8-ch, H.264 and H.265, 4K ultra HD. |
| NVR301-16E2 | 1 slots, 16-ch, H.264 and H.265, 4K ultra HD. |
| NVR304-16S-P16 | 4 slot, 16-ch, 16 PoE interfaces , H.264/H.265 and 4K ultra HD. |
| NVR304-32S-P16 | 4 slot, 32-ch, 16 PoE interfaces , H.264/H.265 and 4K ultra HD. |

| | |
|-------------|---|
| NVR302-09S2 | 2 slots, 9-ch, H.264 and H.265, 4K ultra HD. |
| NVR302-16S2 | 2 slots, 16-ch, H.264 and H.265, 4K ultra HD. |

1.3 Release History

Table 2 Released Versions

| Version No. | Basic Version No. | Released On |
|------------------------|------------------------|-------------|
| NVR-B3601.28.47.201023 | NVR-B3601.28.45.200807 | 2020-10-23 |
| NVR-B3601.28.45.200807 | NVR-B3601.28.41.200723 | 2020-08-07 |
| NVR-B3601.28.41.200723 | NVR-B3601.28.36.200513 | 2020-07-23 |
| NVR-B3601.28.36.200513 | NVR-B3601.28.30.200423 | 2020-05-13 |
| NVR-B3601.28.30.200423 | NVR-B3601.28.26.200319 | 2020-04-23 |
| NVR-B3601.28.26.200319 | B3605P10 | 2020-03-18 |
| B3605P10 | B3603P10 | 2019-12-12 |
| B3603P10 | B3602P40 | 2019-09-27 |
| B3602P40 | B3602P36 | 2019-08-21 |
| B3602P36 | B3602P30 | 2019-07-29 |
| B3602P30 | B3602P26 | 2019-07-02 |
| B3602P26 | B3602P25 | 2019-06-15 |
| B3602P25 | B3602P21 | 2019-06-03 |
| B3602P21 | B3602P15 | 2019-03-11 |
| B3602P15 | B3602P11 | 2019-02-27 |
| B3602P11 | Initial release | 2019-01-18 |

2 Usage Notes

None.

3 Software Features

Table 3 Software Features

| Service | Feature |
|--------------------------|--|
| Audio and video decoding | H.264/H.265 video compression, 4K ultra HD, up to 16Mbps bit rate. |
| Data storage | Local storage of recordings in hard disk(s). |
| Web-based management | Web-based user interface for device configuration and management. |

4 Version Change Description

4.1 Feature Change Description

Table 4 NVR-B3601.28.26.200319 Feature Changes

| Item | Feature | Description |
|-------------------------|--|--|
| Newly added features | Mask detection | Support alarm and configuration of mask detection cameras. |
| | Separate camera name and it's OSD | Support syncing camera name (up to 40 characters) to its OSD name. The sync function is enabled by default. |
| | Improved error message in preview page | More detailed messages such as incorrect password and network error are displayed in preview page, so that user experience improved. |
| | Support disabling third stream audio | Support disabling third stream audio and copying audio settings to multiple channels. |
| | Connect video doorbell | Support video doorbell, which, when connected to the app via an NVR, doorbell calling alarm can be received both on the NVR and the app. |
| | H.265 | Auto switch to H.265 when first connected is enabled by default. |
| | Live view without plug-in | Live view is available without plug-in on the Web interface. |
| | LPR | Add license plate recognition display page. |
| | New local interface | New local GUI; New interaction design in wizard, channel configuration, playback and VCA. |
| | Retrieve password | Retrieve password by email and mobile client. |
| | Preset patrol | Up to 32 presets are allowed for one preset patrol. |
| | Playback in main stream | Playback in standard definition automatically switches to main stream for a maximized window. |
| | Separate permissions | Separate channel live view and audio permissions. |
| | Alarm configuration | Add human body detection. |
| | Improve switching performance when maximizing/restoring window | For connected Topsee cameras, live video starts quickly when maximizing or restoring window. |
| | Face recognition | Support adding face snapshots to face library. |
| | LPR | Whitelist/blacklist vehicle plate recognition. |
| | Heat map | Support heatmap statistics and export. |
| | GA/T1400 | Upload face & plate snapshots to VMS. |
| | Add device without account | Scan to add NVR on app without cloud account. |
| Onvif | Support Profile S. | |
| Pattern unlock | Support drawing pattern to unlock. | |
| Alarm push notification | Push alarm notification traversing NAT. | |
| Web maintenance | Add net detection & network flow. | |
| Auto add IPC | Automatic search and add IPC for 1-SATA NVR with zero configuration. | |

| Item | Feature | Description |
|-------------------|----------------------------------|---|
| | GDPR | Add GDPR privacy statement. |
| | Video&Image DB (Phase 1) | Vehicle license plate recognition and search. |
| | Alarm report | Alarm report in non-subscribe mode, with configuration added on local interface. |
| | Multicast | Add uplink RTSP multicast function |
| Improved features | Improved playback | Support setting skip interval for forwarding and rewinding playback. |
| | Improved storage settings | Support encoding settings of third stream, and more Storage Mode options, so that solve the problem that camera with no third stream cannot play back in SD mode. |
| | Save password | Support saving password. |
| | Improved PTZ presets | Configurable PTZ preset name. |
| | Improved live view startup speed | IPC live view starts up quickly. |
| | POS | Supports AVE protocol. Changed the Start Before setting to 5sec on POS playback page and added a refresh button. |
| | U-Code | U-Code configuration for sub and third streams. |
| | VCA alarm | Added object left behind and removal alarms |
| | APP collaboration | Improves image display speed on APP. |
| | Playback | Supports 32x playback on VMS-B200 |
| | CDN (RTMP) | Added channel-based CDN configuration |
| Deleted features | Prompt to change password | Added a message prompting user to change temporary password |
| | Device connection | Supports adding channels in batch via RTSP |
| Deleted features | 3G/4G | Support 3G/4G SIM card. |

4.2 Operation Change Description

None

4.3 Solved Issues

None

5 Related Documents and Delivery Method

Table 5 Related Document List

| Manual Name | Manual Version | Delivery |
|-------------------------------------|----------------|----------------------|
| Network Video Recorders Quick Guide | V1.00 | Deliver with device. |

6 Version Upgrade Guidance

6.1 Precautions

- This software system includes a software program mirror (Program.bin). Before you start upgrade, please back up configuration data through the system or Web interface in case the upgrade fails.
- Maintain proper network connection and power supply during the upgrade.

6.2 Upgrade Procedure

The version can be upgraded through the system interface and the Web interface, both support cloud upgrade.

6.3 Upgrade Through the System Interface

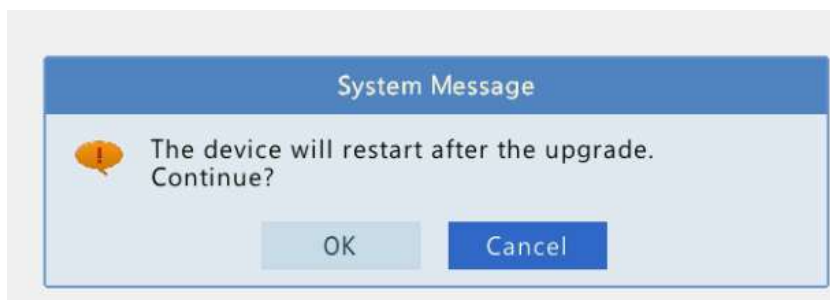
The system interface provides two options for upgrading the system software: local upgrade using a USB drive and cloud upgrade.

1. Local upgrade

Before you start, copy the correct upgrade file to the root directory of the USB drive.

- (1) Plug the USB drive into the USB interface on the NVR.
- (2) Log in to the system interface as “admin”.
- (3) Click **Maintain > Upgrade**.
- (4) Click **Upgrade**, select the upgrade file from the drop-down list, and then click **Upgrade**. A prompt message appears.
- (5) Click **OK**.

Figure 1 Prompt Message



- (6) The NVR will restart automatically when the upgrade is completed.

2. Cloud upgrade

Before you start, check that the NVR is correctly connected to the public network.

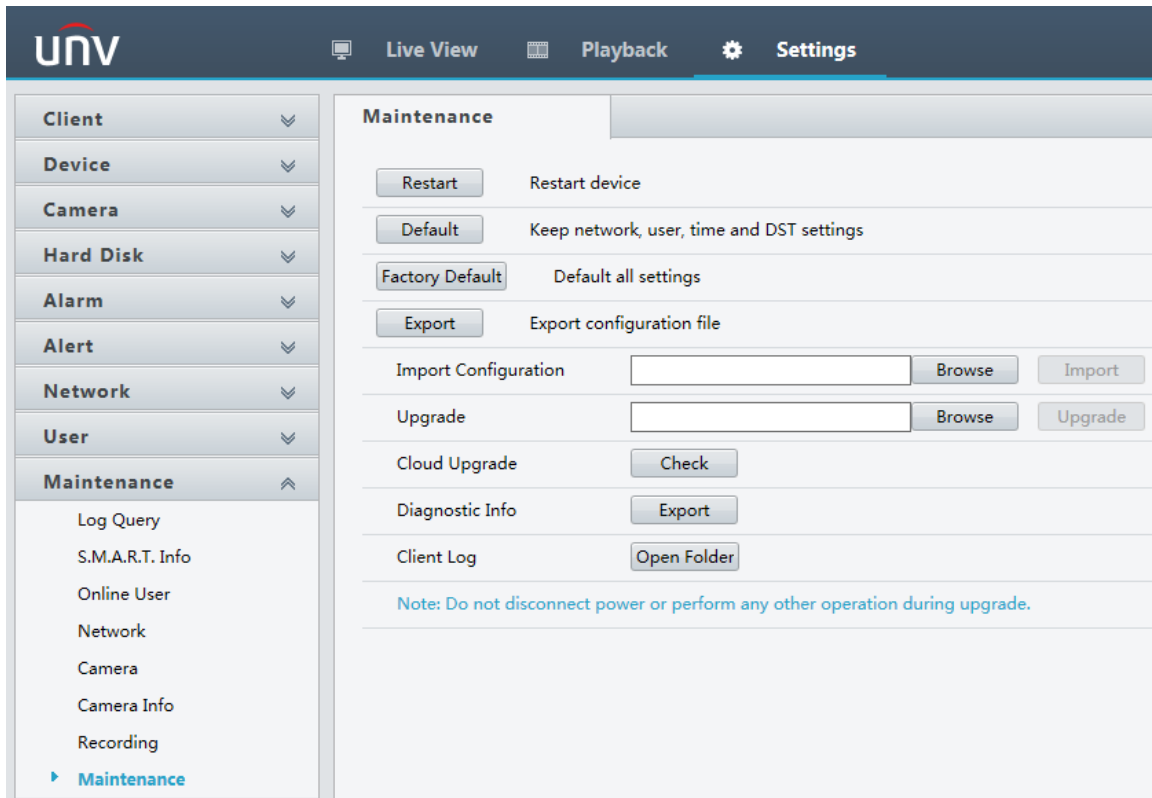
- (1) Click **Maintain > Upgrade**, and then click **Check** to check for the latest version.
- (2) Click **Upgrade** after a newer version is detected.

6.4 Upgrade Through the Web Interface

Perform the following steps to upgrade through the Web interface:

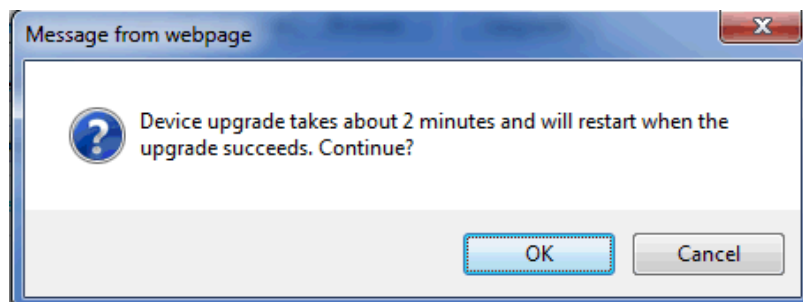
- (1) Log in to the Web interface as “admin”.
- (2) Click **Settings > Maintenance > Maintenance**.

Figure 1 System Maintenance



- (3) Click **Browse** right to the **Upgrade** field, select the **Program.bin** file to upgrade, and then click **Upgrade**.
- (4) If the NVR is connected to the public network, you may also click **Check** to perform a cloud upgrade. If a newer version is detected, a prompt message will appear. Click **OK** to start upgrade.

Figure 2 Prompt Message



- (5) The NVR will restart automatically when the upgrade is completed.

© 2020 Zhejiang Uniview Technologies Co., Ltd. All Rights Reserved.

No part of this manual may be reproduced or transmitted in any form or by any means without prior written consent of Zhejiang Uniview Technologies Co., Ltd.

The information in this manual is subject to change without notice.