

# B3119P32 Release Notes

Zhejiang Uniview Technologies Co., Ltd.

# B3119P32 Release Notes

Keywords: Version information, usage notes, precautions.

**Abstract:** This document provides information about the **B3119P32** board software, including version information, usage notes, precautions, and features.

## Acronym

| Acronym | Full Name              |
|---------|------------------------|
| NVR     | Network Video Recorder |

# Contents

- 1 Version Information..... 3
  - 1.1 Version Number .....3
  - 1.2 Applied Product Models .....3
  - 1.3 Release History .....3
- 2 Usage Notes ..... 4
- 3 Software Features ..... 4
- 4 Version Change Description ..... 4
  - 4.1 Feature Change Description .....4
  - 4.2 Operation Change Description .....8
- 5 Related Documents and Delivery Method..... 8
- 6 Version Upgrade Guidance ..... 9
  - 6.1 Precautions.....9
  - 6.2 Upgrade Procedure .....9
  - 6.3 Upgrade Through the System Interface.....9
  - 6.4 Upgrade Through the Web Interface..... 10

# 1 Version Information

## 1.1 Version Number

B3119P32

## 1.2 Applied Product Models

Table 1 Applied Product Models

| Product Models | Description   |
|----------------|---|
| NVR304-16E     | 4 slots, 16-ch, H.264 and H.265, 4K ultra HD                  |
| NVR304-32E     | 4 slots, 32-ch, H.264 and H.265, 4K ultra HD                  |
| NVR302-08E-P8  | 2 slots, 8-ch, 8 PoE interfaces, H.264, H.265, 4K ultra HD.   |
| NVR302-16E-P8  | 2 slots, 16-ch, 8 PoE interfaces, H.264, H.265, 4K ultra HD.  |
| NVR302-16E-P16 | 2 slots, 16-ch, 16 PoE interfaces, H.264, H.265, 4K ultra HD. |
| NVR304-16EP    | 4 slots, 16-ch, 16 PoE interfaces, H.264, H.265, 4K ultra HD. |
| NVR304-32EP    | 4 slots, 32-ch, 16 PoE interfaces, H.264, H.265, 4K ultra HD. |

## 1.3 Release History

Table 2 Released Versions

| Version No. | Basic Version No. | Released On |
|-------------|-------------------|-------------|
| B3119P32    | B3119P22          | 2017-04-06  |
| B3119P22    | B3118P31          | 2017-01-19  |
| B3118P31    | B3118P29          | 2016-09-26  |
| B3118P29    | B3118P27          | 2016-09-10  |
| B3118P27    | B3118P26          | 2016-08-30  |
| B3118P26    | B3118P15          | 2016-08-22  |
| B3118P15    | B3117P25          | 2016-07-23  |
| B3117P25    | B3116P23          | 2016-05-25  |
| B3116P23    | B3116P20          | 2016-02-02  |
| B3116P20    | B3115P35          | 2016-01-18  |
| B3115P35    | B3115P30          | 2015-11-05  |
| B3115P30    | Initial release   | 2015-10-14  |

## 2 Usage Notes

None.

## 3 Software Features

Table 3 Software Features

| Service                  | Feature   |
|--------------------------|---|
| Audio and video decoding | H.264 and H.265, 4K resolution display, up to 16Mbps bit rate.    |
| Data storage             | Local storage of recordings in hard disk(s).                      |
| Web-based management     | Web-based user interface for device configuration and management. |

## 4 Version Change Description

### 4.1 Feature Change Description

Table 4 B3119P22 Feature Changes

| Item              | Feature                                    | Description  |
|-------------------|--|--|
| New features      | U-Code                                     | U-Code is a patented technology of Uniview that accomplishes higher compression efficiency than H.264/H.265.   |
|                   | NAS  | Supports NAS storage device.   |
|                   | Auto guard                                 | Enables the PTZ camera to operate automatically as configured if no operation is performed during a certain time period. This function can avoid situations where the camera is left to monitor an incorrect scene by user's negligence. |
|                   | Multicast                                  | Makes live view possible even when the number of connecting Web clients exceeds the limit the NVR can accommodate.   |
|                   | PoE/network port status                    | Displays port status for network ports, and port status and power information for PoE ports.   |
|                   | USB Device window                          | Automatically displays the window when a USB storage device is plugged in during device startup or in preview status. The window can also be opened by clicking the USB icon on the screen toolbar.                                      |
| Improved features | Uniview logo                               | Displays Uniview logo in idle preview windows. This feature is only available to Uniview version.  |
|                   | Auto switch to                             | Automatically switches to H.265 and U-Code when connected by Uniview IPC and sends default bitrate settings to IPC.  |
|                   | Copy video compression and U-Code settings | Allows user to copy video compression and U-Code settings and quickly apply them to other IPCs.  |
|                   | Draw schedules                             | Allows users to make recording and snapshot schedules by drawing.  |
|                   | Instant playback                           | Instant playback time is now configurable.   |
|                   | Mouse operation                            | Allows user to adjust the moving speed of mouse pointer.   |
|                   | IPC upgrade                                | Upgrade a batch of IPCs by cloud or USB storage device.  |
|                   | Preview                                    | Live view window's yellow borders disappear automatically in 20  |

| Item             | Feature         | Description   |
|------------------|-----------------|---|
|                  |                 | seconds if no operation is performed.   |
|                  | Snapshot        | The window borders flash white when taking a snapshot during live view or playback.         |
|                  | Resolution      | Restore default resolution by pressing and holding the scroll wheel for at least 3 seconds. |
|                  | DHCP            | DHCP is enabled by default for international versions.                                      |
|                  | Playback by tag | Allows playback by tag on Web client.   |
| Deleted features | None            | None  |

Table 5 B3118P15 Feature Changes

| Item                              | Feature  | Description   |
|-----------------------------------|--|---|
| Newly added features              | N+1 hot spare  | Data and service backup between devices; supports data transfer back to the working device from hot spare when the working device is restored to normal status.                   |
|                                   | VCA  | Work with smart IPC to achieve VCA functions (smart detection and smart search), enhanced playback by event.  |
|                                   | Fisheye  | Supports connection to certain models of Uniview fisheye cameras.   |
|                                   | RTSP-based connection to IPC   | Adds IPC by RTSP for live view and playback (IPC configuration not supported).  |
|                                   | RTSP URL format on screen  | Displays RTSP URL format and a description, and users can view live video from a channel of the NVR by visiting the corresponding URL using an RTSP-enabled device.               |
|                                   | Ucode  | Uniview's private encoding rules which greatly improve the compression rate compared with average encoding modes.   |
|                                   | IPv6   | Supports IPv6 and offers three options to set an IPv6 address: Manual, DHCP, Router Advertisement.  |
|                                   | 3G/4G  | Enables connection to the Internet through cellular network (WCDMA, CDMA2000, TD-SCDMA, 4G LTE) using a dongle.   |
| Improved features                 | Quick view of serial number  | View the device's serial number by double-clicking the lower left corner of the login dialog box as admin.  |
|                                   | Improved encoding configuration  | Automatically refreshes encoding configurations; automatically changes bit rate as the user changes resolution and frame rate.  |
|                                   | One-click cancellation of binding to EZCloud   | Allows the user to cancel binding to EZCloud account by clicking the Delete button without visiting the EZCloud website.  |
|                                   | Enhanced ease of use   | Displays device operation time, camera offline cause, a system message when the USB storage device is unplugged, and added the Camera Name column under Advanced.                 |
|                                   | Enhanced corridor mode   | Added 4/9/10/12/16 corridor modes on the system interface.  |
|                                   | Added OSD configurations   | Added font color and size options for OSD configuration.  |
|                                   | Optimized playback   | Supports reverse playback; max. 256x playback speed on the system interface, and 16x playback speed on the web interface; with apparently improved fluency at low playback speed. |
| Optimized alarm-triggered preview | Changes alarm-triggered preview from "sequence display three times" to "display from alarm is reported till alarm is cleared." |   |

|                  |      |      |
|------------------|------|------|
| Deleted features | None | None |
|------------------|------|------|

Table 6 B3117P25 Feature Changes

| Item                 | Feature  | Description   |
|----------------------|--|---|
| Newly added features | Independent video output   | Independent play and playback of different live videos; dual-preview images.  |
|                      | Cache post recording   | Videos are saved to the SD card if connection to the IP camera is lost. When the camera gets back online, videos saved on the SD card will be transmitted and stored on the NVR. No configuration is required.  |
|                      | Disk group management  | Allows the user to designate disks to different groups and specify different disk groups to store video from different cameras, making storage space calculation for each camera unnecessary.   |
|                      | Redundant storage  | Extra copy for important recordings.  |
|                      | Improved colors for the user interface                               | Uses Uniview standardized style to improve the user interface and enhance the identification of icons and symbols.  |
|                      | Web-based control of system interface                                | Allows the user to change image resolution and preview sequence on the system interface through the Web interface.  |
|                      | Alarm-triggered pop-up window  | A window pops up on the system interface to alert the user when an alarm occurs.  |
| Improved features    | ARP protection   | Obtains the MAC of its gateway at first startup and communicates with the gateway with this MAC ever since. The MAC can be edited as needed.  |
|                      | Optimized system interface for ease of use                           | Improves window toolbar, shortcut menu, PTZ control, startup wizard, and the menu bar at the bottom of the screen for easier use.   |
|                      | Enhanced playback on the Web interface                               | Allows smart playback and event-based playback on the Web interface.  |
|                      | PTZ control  | The system interface supports PTZ control using shortcut keys.  |
|                      | Enhanced ability to connect to IP cameras                            | Added the following for Uniview IP cameras: <ul style="list-style-type: none"> <li>1. White balance mode</li> <li>2. Scenes</li> <li>3. Alarm indicating failed camera access attempts</li> </ul>   |
|                      | Enhanced downlink ONVIF  | Allows the user to disable time synchronization with IP cameras. This feature prevents the problem that some third-party IP cameras cannot get online because they do not support time zone synchronization or time synchronization.  |
|                      | Enhanced uplink ONVIF  | <ul style="list-style-type: none"> <li>1. Combines uplink ONVIF port with HTTP port to improve networking adaptability.</li> <li>2. Reports more alarm types (disk offline, disk abnormal).</li> <li>3. Allows the obtainment and modification of the device name.</li> </ul> |
|                      | Log export   | Allows the user to export logs as CVS files for easy search and management.   |
|                      | One plug-in for NVR and IPC  | Allows the user to install the plug-in only once for accessing the NVR and IP cameras using a Web browser.  |
|                      | Plug&play  | Changes the default IP address to 192.168.1.30 while also supports 192.168.0.30 to adapt to default network environments of most routers and network switches and simplify configuration.   |
| Network security     | Improves protection against network attacks for better user privacy. |   |

| Item             | Feature           | Description   |
|------------------|-------------------|---|
|                  | User management   | Increases the number of concurrent remote users from 16 to 128. |
|                  | Web-based upgrade | Filters file types for local upgrade through the Web interface. |
|                  | Maintenance tool  | Allows the changing of user password through EZTools.           |
| Deleted features | None              | None  |

Table 7 B3116P20 Feature Changes

| Item                 | Feature  | Description  |
|----------------------|--|--|
| Newly added features | Manual alarm output control  | Enables the user to trigger or clear output alarms manually.   |
|                      | Preview control  | Displays a logo in preview windows for the user with no live view permission in these windows.   |
|                      | Packet capture on Web  | Enables the user to capture packets on the NVR's NIC from the Web.   |
|                      | Drag in preview window   | Enables the user to switch a camera by dragging the preview window.  |
|                      | Watermark on recording to prevent tampering                            | Enables the user to use a tool and determine whether the exported video recorded from a watermark-enabled camera has been tampered with.   |
|                      | Playback by log  | Enables the user to play recordings based on log search results in the log query window.   |
|                      | Preview in camera window on NVR  | Enables preview in the camera window.  |
|                      | Bad sector detection   | Enables disk status self-test and back sector detection.   |
|                      | UNP connection by dial-up  | Enables connection to a UNP server by dial-up.   |
|                      | Audio detection alarm  | Can identify and raise audio detection alarms when connected to IP cameras that support audio detection.   |
|                      | Buzzer configuration   | <ol style="list-style-type: none"> <li>1. Allows users to stop buzzer manually.</li> <li>2. Enables the buzzer to stop sounding when the alarm is cleared.</li> </ol>  |
| Improved features    | Optimized startup wizard   | Displays different procedures intelligently, simplifies steps and improves usability.  |
|                      | Optimized stream selection in multi-window preview in system interface | Optimizes rules for choosing streams in multi-window preview: uses sub stream by default and uses main stream if sub stream is unavailable; enables stream preference configuration (main or sub stream) in multi-window preview.  |
|                      | Enhanced capability of connecting IP cameras via ONVIF                 | Enables compatibility with XiongMai IP cameras, enables automatic adding of IP cameras and changing of IP addresses.   |
|                      | Enhanced private protocol  | Enables the user to upgrade IP cameras by cloud and restore factory default settings for IP cameras on the NVR.  |
|                      | Audio output control   | <ol style="list-style-type: none"> <li>1. The audio on/off button, switch camera button, and the volume slider are moved to the preview window toolbar, allowing the user to mute or play sound for each channel separately.</li> <li>2. Enables the configuration of audio data transfer to control whether the IP camera sends audio data or not.</li> </ol> |
|                      | Image snapshot and upload via FTP                                      | Supports scheduled snapshot, alarm-triggered snapshot, and snapshot sending via e-mail and upload via FTP. Models that support   |



| Item             | Feature  | Description   |
|------------------|--|---|
|                  |  | this function: NVR308-32R, NVR308-64R.  |
|                  | Snapshot as email attachment                         | Enables snapshot sending by email. Models that support this function: NVR308-32R, NVR308-64R.   |
|                  | Optimized playback operation                         | <ol style="list-style-type: none"> <li>1. Starts playback automatically for the corresponding camera when the user selects a preview window and then selects <b>Playback</b> from the shortcut menu.</li> <li>2. Enables the user to deselect all the selected cameras by clicking the <b>Close All</b> button added in the playback window.</li> </ol> |
|                  | Optimized zoom area                                  | Specifies aspect ratio for zoom areas drawn by the user.  |
|                  | Adaptive to changed camera IP address                | The NVR can automatically identify and reconnect DHCP-enabled IP cameras after their IP addresses are changed.  |
|                  | Enhanced ONVIF uplink capability                     | When connected to a higher-level management platform via ONVIF, the NVR supports recording type search, disk status search, smart playback, and enables snapshot from the platform without establishing live view.  |
|                  | Maintenance collection info                          | <ol style="list-style-type: none"> <li>1. Exported diagnosis information is improved.</li> <li>2. Enables the user to switch on the debug function with Ctools to gather more information.</li> </ol>   |
|                  | Enhanced client functions                            | Enables the user to test network bandwidth and diagnose network delay on EZStation and mobile client.   |
|                  | Automatic resumption for PTZ camera                  | Enables the PTZ camera to resume interrupted patrol after a restart due to power failure.   |
|                  | Domain name identification for NTP and other servers | Identifies domain names input for the NTP server and the server in network delay and packet loss test.  |
|                  | Enhanced keyboard functions                          | Enables Uniview surveillance keyboards to control presets of PTZ cameras.   |
|                  | Optimized cloud status                               | Displays causes for devices failed to connect to EZCloud.   |
| Deleted features | None   | None  |

## 4.2 Operation Change Description

None

## 5 Related Documents and Delivery Method

Table 8 Related Document List

| Manual Name                         | Manual Version | Delivery             |
|-------------------------------------|----------------|----------------------|
| Network Video Recorders Quick Guide | V1.00          | Deliver with device. |

## 6 Version Upgrade Guidance

### 6.1 Precautions

- This software system includes a software program mirror (Program.bin). Before you start upgrade, please back up configuration data through the system or Web interface in case the upgrade fails.
- Maintain proper network connection and power supply during the upgrade.

### 6.2 Upgrade Procedure

The version can be upgraded through the system interface and the Web interface, both support cloud upgrade.

### 6.3 Upgrade Through the System Interface

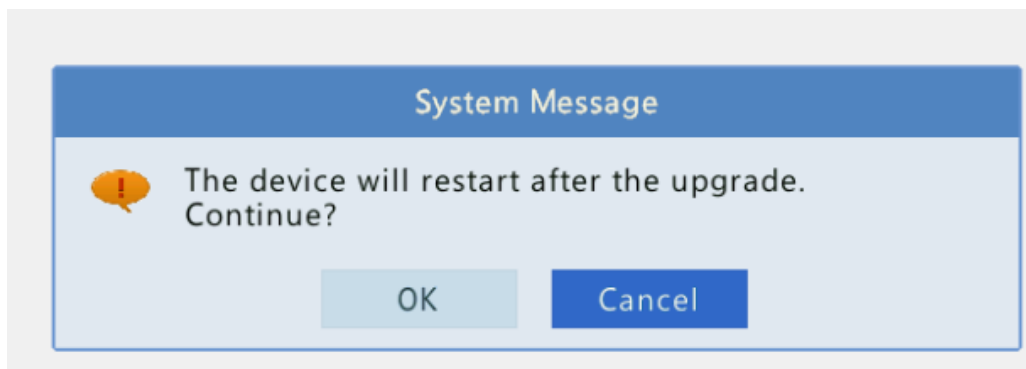
The system interface provides two options for upgrading the system software: local upgrade using a USB drive and cloud upgrade.

#### 1. Local upgrade

Before you start, copy the correct upgrade file to the root directory of the USB drive.

- (1) Plug the USB drive into the USB interface on the NVR.
- (2) Log in to the system interface as “admin”.
- (3) Click **Maintain > Upgrade**.
- (4) Click **Upgrade**, select the upgrade file from the drop-down list, and then click **Upgrade**. A prompt message appears.
- (5) Click **OK**.

Figure 1 Prompt Message



- (6) The NVR will restart automatically when the upgrade is completed.

#### 2. Cloud upgrade

Before you start, check that the NVR is correctly connected to the public network.

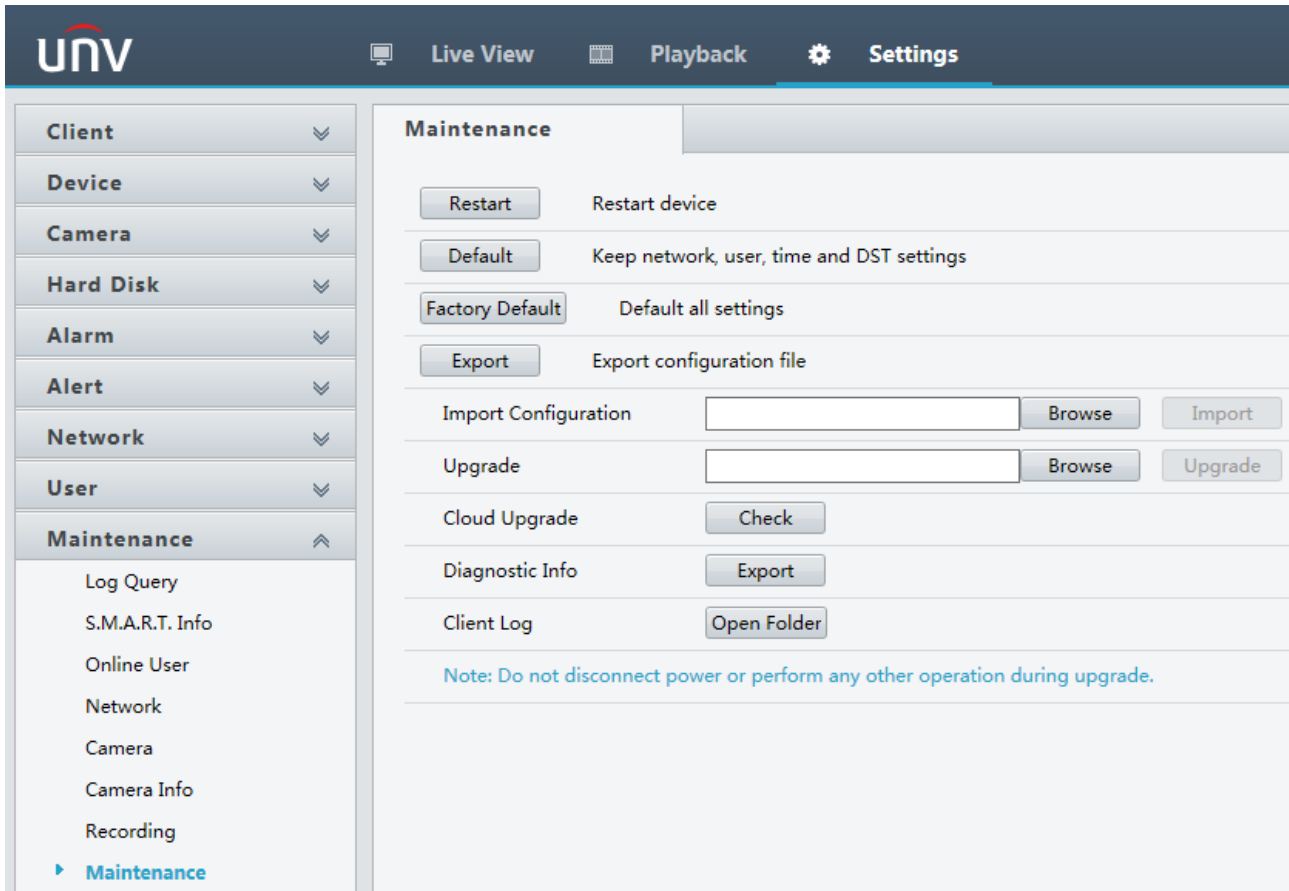
- (1) Click **Maintain > Upgrade**, and then click **Check** to check for the latest version.
- (2) Click **Upgrade** after a newer version is detected.

## 6.4 Upgrade Through the Web Interface

Perform the following steps to upgrade through the Web interface:

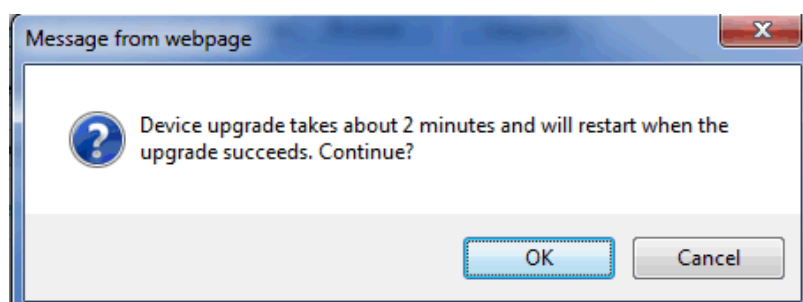
- (1) Log in to the Web interface as “admin”.
- (2) Click **Settings > Maintenance > Maintenance**.

Figure 2 System Maintenance



- (3) Click **Browse** right to the **Upgrade** field, select the **Program.bin** file to upgrade, and then click **Upgrade**.
- (4) If the NVR is connected to the public network, you may also click **Check** to perform a cloud upgrade. If a newer version is detected, a prompt message will appear. Click **OK** to start upgrade.

Figure 3 Prompt Message



- (5) The NVR will restart automatically when the upgrade is completed.

© 2017, Zhejiang Uniview Technologies Co., Ltd. All Rights Reserved.

No part of this manual may be reproduced or transmitted in any form or by any means without prior written consent of Zhejiang Uniview Technologies Co., Ltd.

The information in this manual is subject to change without notice.