

Catalogus

| | |
|--------------------------|---|
| KIT NVR301-04LB-W-1..... | 1 |
| KIT NVR301-04LB-W-2..... | 2 |

DISCLAIMER

- Thank you for choosing our product. Please contact your local dealer if you have any questions or feedback.
- No part of this manual may be copied, reproduced, translated, or distributed in any form or by any means without prior consent in writing from our company.
- Contents of this manual are subject to change without prior notice.
- No statement, information, or recommendation in this manual shall constitute formal guarantee of any kind, expressed or implied.

SAFETY INFORMATION

- Please read through this guide carefully before you start.
- Installation and maintenance must be performed by qualified personnel.
- This device is a class B product and may cause radio interference. Take measures if necessary.
- Make sure the device is stably installed and has clear ventilation.
- Ensure a proper operating environment, including temperature, humidity, ventilation, power supply, and lightning protection. The device must always be properly grounded. Keep the device from dust, excessive vibration, liquid of any kind, and strong electromagnetic radiation.
- Protect the power cables, plugs, and sockets so they won't be accidentally stepped on or pressed.
- Make sure the devices are properly connected after completing the installation. Incorrect connection may cause personal injury and device damage.
- A sudden power failure may cause damage or malfunction. Use a UPS if possible.
- Keep water and liquid of any kind from entering the device.
- Dispose of the used battery according to local regulations or the battery manufacturer's instructions. Improper use or replacement of the battery may cause risk of explosion. Never dispose of the battery in fire.

REGULATORY COMPLIANCE

FCC STATEMENT

This device complies with Part 15 of the FCC Rules. Operation is subject to the following two conditions:
 (1) This device may not cause harmful interference, and (2) this device must accept any interference received, including interference that may cause undesired operation.

2

FCC CAUTION

Changes or modifications not expressly approved by the party responsible for compliance could void the user's authority to operate the equipment.

This transmitter must be installed to provide separation distance of at least 20cm from all persons.

FCC PART 15

This equipment has been tested and found to comply with the limits for a Class B digital device, pursuant to part 15 of the FCC Rules. These limits are designed to provide reasonable protection against harmful interference in a residential installation. This equipment generates, uses and can radiate radio frequency energy and, if not installed and used in accordance with the instructions, may cause harmful interference to radio communications. However, there is no guarantee that interference will not occur in a particular installation. If this equipment does cause harmful interference to radio or television reception, which can be determined by turning the equipment off and on, the user is encouraged to try to correct the interference by one or more of the following measures:

- Reorient or relocate the receiving antenna.
- Increase the separation between the equipment and receiver.
- Connect the equipment into an outlet on a circuit different from that to which the receiver is connected.
- Consult the dealer or an experienced radio/TV technician for help.

RED CAUTION

The Maximum Permissible Exposure (MPE) level is calculated based on a distance of d=20 cm between the device and the human body. To maintain compliance with the RF exposure requirement, a separation distance of 20 cm between the device and the human should be maintained.

RE DIRECTIVE

CE This product complies with the European Radio Equipment Directive 2014/53/EU.

WEEE DIRECTIVE-2012/19/EU

The product this manual refers to is covered by the Waste Electrical & Electronic Equipment (WEEE) Directive and must be disposed of in a responsible manner.

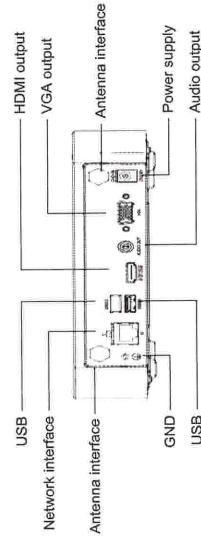
BATTERY DIRECTIVE-2013/56/EC

Battery in the product complies with the European Battery Directive 2013/56/EC. For proper recycling, return the battery to your supplier or to a designated collection point.

3

APPEARANCE

NVR (Frequency: 2412-2472 MHz, RF POWER_{max}: 17.99 dBm)



CAMERA (Frequency: 2412-2472 MHz, RF POWER_{max}: 18.54 dBm)

Take bullet camera as an example



4

DEFAULT SETTINGS

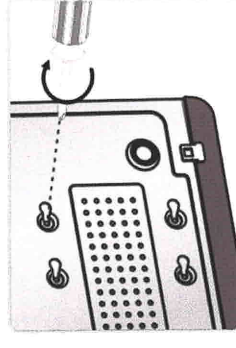
| Device | IP Address | Username/Password |
|--------|--------------|-------------------|
| NVR | 192.168.1.30 | admin/123456 |
| Camera | 192.168.1.13 | admin/123456 |

- For NVR, use 192.168.0.30 if you cannot log in with 192.168.1.30.
- Set a strong password for security. A strong password contains at least 8 characters including letters, digits and special characters.

STEP 1 INSTALL HARD DISK

Prepare a Phillips screwdriver (1# or 2#). Please contact your dealer for specifications of compatible hard disks.

Make sure power is disconnected before you start. Wear antistatic gloves or wristband throughout installation.



1. Remove the cover, connect data and power cables to disk, and then secure disk with screws.



2. Connect data and power cables to the motherboard and then install the cover.

6

Wi-Fi Kit QUICK GUIDE

Version: V1.06 BOM: 3101COMW



3101COMW151039106

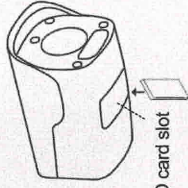
INSTALL SD CARD (OPTIONAL)

- Some camera models support Micro SD card. Please consult your dealer for specifications of recommended Micro SD cards.
- Do NOT operate the SD card with power applied, as this may damage the camera and the SD card.

1. Open the bottom cover.



2. Insert the SD card properly.



7

STEP 4 PAIR DEVICES

OPTION 1: PAIR MANUALLY

1. Connect the camera to a PC with a network cable. Connect power.
2. Open a Web browser on your PC, enter the camera's IP address, and then press **Enter**.
3. Enter the default username and password to log in.
4. Choose **Setup > Network > Wi-Fi**, and set the same SSID and password as that on the NVR.
5. Click **Save**.

OPTION 2: USE ONE-CLICK PAIR

This function works within 3 minutes after the camera starts up. So, if the camera is not paired successfully within this time, please try other methods.

1. Right-click on the NVR and then choose **Menu > System > Wi-Fi AP**.
2. Change the settings as needed. And click **Apply** to save the settings.
3. Pair devices again.

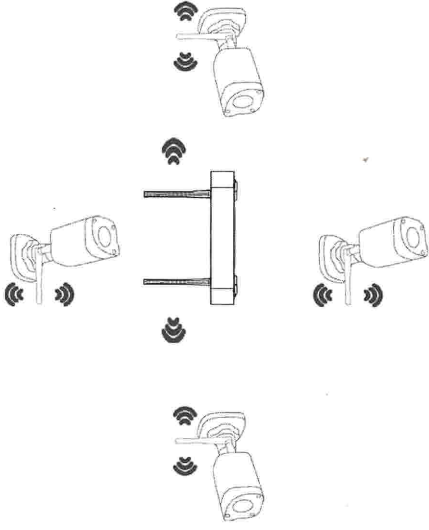
OPTION 3: PAIR BY NETWORK CABLE

1. Connect the camera and NVR to a network switch with network cables.
2. Configure network at **Menu > System > Network** on the NVR.
3. Add the camera at **Menu > Camera**.

10

STEP 2 CONNECT THE KIT

1. Connect the NVR to a monitor with a VGA or HDMI cable (not included in the kit).
2. Plug a mouse into the USB interface on the NVR.
3. Connect the NVR and camera to power.
4. Recommended orientations of antennas (take bullet camera as an example) Wi-Fi connectivity is the best when antennas are parallel with each other, and is the poorest when the top of an antenna points directly to the top of another. Please arrange the antennas properly to improve Wi-Fi connectivity.



• Now you have finished the basic setup. If you haven't changed any default settings, the devices will pair automatically, and video will display on the monitor screen.

- To change the default Wi-Fi settings, go to Step 3. Please note you need to pair devices again.

8



With the app you can have live view anytime, anywhere, as long as your mobile phone (iOS or Android) and NVR are connected to the Internet.

Step 1 Get app

You will find a QR code sticker on your NVR. Take your mobile phone over to the NVR and scan the QR code. It automatically goes to an app store. Follow on-screen instructions to get and install the app. Sometimes a scan gets you a string of codes. In this case, please contact your local dealer.

Step 2 Add NVR on app

Start the app, sign up and then scan the QR code again to add the NVR.

11

STEP 3 CHANGE WI-FI SETTINGS

- You need to pair devices again after changing Wi-Fi settings on the NVR.
1. Right-click on the NVR and then choose **Menu > System > Wi-Fi AP**.
 2. Change settings as needed.

• The NVR's wireless NIC IP must be in a different network segment with its LAN IP address.

- The NVR assigns IP address to connecting devices based on the start and end IP address range. You can use the range to limit the number of connections (max. 8) from camera, mobile phone, etc.
- In addition to Wi-Fi, the devices can also connect via network cable. See Step 4 Option 3 for details.



SPECIFICATIONS FOR ACCESSORIES

| Item | Qty | Voltage | Power |
|---------|---|--------------|------------------|
| Adapter | 1 (IPC) | AC 100V-240V | 12V/1A or 12V/2A |
| | 1 (IPC) | AC 100V-240V | 12V/1A or 12V/2A |
| | 1 (IPC) | AC 100V-240V | 12V/1A or 12V/2A |
| | 1 (IPC) | AC 100V-240V | 12V/1A or 12V/2A |
| Mouse | 1 (NVR) | AC 100V-240V | 12V/1A or 12V/2A |
| | 1 | DC 4.5-5.5V | - |
| Remarks | 1. Please use the adapters and mouse delivered with the kit. 2. If a replacement is necessary, please choose a product of the specified voltage and power. | | |

9

Q&A

Q: Why the camera connected by Wi-Fi frequently goes offline?

A: Try the following to improve connection:

1. Relocate the camera and keep it closer to the NVR; minimize obstacles between the devices.
2. Re-orient antennas of the devices.
3. Try another channel. Channel 1, 6, and 11 are recommended.

Q: How to restore the NVR to factory default settings?

A: **Menu > Maintenance > Restore**.

Q: How to upgrade the NVR?

A: 2 options:

Option 1: **Menu > Maintain > System Upgrade**.

Option 2: Use a Web browser to access the NVR and choose **Setup > Maintenance > Maintenance**.

Q: How to upgrade the camera?

A: 2 options:

Option 1: Upgrade the camera from the NVR: **Menu > Camera > Camera > Advanced**.

Option 2: Use a Web browser to access the camera and choose **Setup > System > Maintenance**.

12